

October 2009

Aoral District Data Book 2009

District Code Nr: 504

Kampong Speu Province

Table of Contents

List of Abbreviations	i
Glossary.....	ii
Preface	vi
Introduction	vii
SECTION A: GEOGRAPHY	1
1 Administration and Infrastructure.....	3
2 Land Use and Natural Resources.....	5
3 Geography	7
3.1 Land Area	7
3.2 Distances between Offices	7
SECTION B: DISTRICT PROFILE	9
1 General Information	11
1.1 Population of the District.....	11
1.2 Occupations	12
1.3 Property	14
2 Infrastructure and Economy.....	16
2.1 Roads in meters over 3 years.....	16
2.2 Sewerage Pipes in meters over 3 years.....	16
2.3 Drainage and Bridges	16
2.4 Services in the District	16
2.5 Agriculture.....	17
3 Social Aspects	28
3.1 Education	28
3.2 Health.....	34
3.3 Water and Sanitation	36
3.4 Vulnerable groups.....	40
3.5 Migration	41
4 Natural Resources and Environment (NRE).....	44
4.1 Families involved with NRE issues over 3 years	44
4.2 Percentage of Families involved with Natural Resource issues, by Commune, for 2008	44
4.3 Percentage Houses with access to Garbage collection and Families affected by environmental Pollution, by Commune, for 2008	44
4.4 Percentage Families using chemical Fertilizer and chemical Pesticides, by Commune, for 2008 ..	45
5 Administration and Security	46

5.1	Birth Registration across 3 years.....	46
5.2	Number of unregistered Infants born in 2008, by Commune	46
5.3	Registered criminal Cases over 3 years	46
5.4	Registered criminal Cases per 10,000 people, by Commune, for 2008.....	46
5.5	Number of registered Land Disputes, by Commune, in 2008	46
6	Gender	47
6.1	Registered Domestic Violence over 3 years.....	47
6.2	Percentage of registered cases of Families experiencing domestic Violence, by Commune, in 2008	47
6.3	Women's involvement over 3 years.....	47
6.4	Percentage of Female Participants in Civil Society and of 18-60 year women with uncertain Jobs, by Commune, in 2008	48
6.5	Female-headed Households over 3 years.....	48
6.6	Percentage female-headed Households and with Children of less than 5 years old, by Commune, in 2008	48
7	Indigenous People in the District	49
7.1	Ethnic Minorities in the District over 3 years.....	49
7.2	Other Minorities in the District over 3 years.....	49
	SECTION C: PLANS AND PROJECTS	51
8	Priorities and Plans	53
8.1	Priorities of Commune Councils for 2009 in the District by Sector	53
8.2	Temporary Agreements by Commune, for 2009	60
8.3	Outputs, estimated and actual costs of C/S Fund Projects between 2005 and 2008, by Commune	75
8.4	Total Expenditure on C/S Fund Projects by sector and commune between 2005 and 2008.....	75
8.5	Actual 2009 C/S Fund projects by Commune	76
9	District level Projects from 2006 to 2009	77
9.1	District Initiative Infrastructure Projects from 2006 to 2009	77
9.2	District Initiative Service Projects from 2006 to 2009	78
9.3	Inter Commune Council Projects in 2008 and 2009	79
9.4	Other Projects in 2008 and 2009	79
	SECTION D: SERVICES AND ORGANIZATIONS	83
10	Infrastructure.....	85
10.1	Length of and Expenditure on Roads in 2008, by District	85
10.2	Scale of and Expenditure on Irrigation in 2008, by District.....	85
10.3	Power Supply in 2008, by District	86
11	Health Facilities.....	87

11.1 Health Facilities in the Province, by Operational District.....	87
11.2 Health Facilities and Staff in the province, by Operational District.....	87
11.3 Deliveries in 2007 in the Province, by Operational District.....	89
12 Education	90
12.1 Schools, Classes, Students, Staff, for for all levels, for 2007/2008 by District.....	90
12.2 Characteristics of Schools and School Principals for 2007/2008 by Commune	90
12.3 Enrolment by Level of Education, 2006/2007 by Commune	91
12.4 Enrolment by Level of Education, 2007/2008 by Commune	91
12.5 Aspects of Enrolment for 2007/2008 by Commune.....	91
12.6 School Buildings for all schools in the District for 2007/2008, by Commune	92
12.7 Conditions of Classrooms and Existence of Separate School Office and Library, by Commune	92
12.8 Community Participation and Financing across all schools in the District for 2007/2008 by Commune	92
12.9 Percentage Student Flow Rates and Graduation by level 2006/2007, by Commune	93
13 Staff and Resources at the District	94
13.1 District Councilors elected in 2009	94
13.2 Committees of the Council.....	94
13.3 Board of Governors.....	94
13.4 Offices under Sala Krong, Sala Srok and Sala Khan	95
13.5 Municipality/District/Khan line offices.....	95
13.6 Properties and Equipment of District Administration	95
13.7 Registered Revenue of the District Administration in 2008	96
13.8 Services in the District	96
13.9 Civil Society Organizations active in the District.....	97
13.10 Private Sector Organizations.....	98
SECTION E: POVERTY DATA	101
14 Data on Poverty	103
14.1 Predicted Poverty Rates for 2009, by commune	103
14.2 Poverty data from survey.....	103

List of Abbreviations

#	Number
AGR	Agriculture
BR	Birth Registration
C. Pilot	Piloted Commune
C/S	Commune / Sangkat
CBO	Community-Based Organization
CDB	Commune Database
CDPD	Commune Development and Planning Database
CIP	Commune Investment plan
CLTS	Community Led-Total Sanitation
Comm.	Commune
Com Cov	Commune Covered
CPA	Complementary Package of Activities
CPS	Community Preschool
CCWC	Commune Committees for Women and Children
DANIDA	Danish International Development Agency
DDLG	Democratic Development and Local Governance Project (EC-UNDP)
DFID	Department For International Development (UK)
DIP	District Initiative Project
DIS	District Information System
District PDRD	District Office of Rural Development
District WP	District Work Plan
DIW	District Integration Workshop
DoLA	Department of Local Administration
Dr	Doctor
DWRM	District Office of Water Resource and Meterology
ECD	Early Childhood education (part of PE)
EMIS	Education Management Information System
Event IC	Celebration of International Days
FDH	Former District Hospital
GTZ	German Society for Technical Cooperation (Gesellschaft für Technische Zusammenarbeit GmbH)
Ha	Hectare
HC	Health Center
HC (NB)	Health Center (no building)
HH	Headed Household
HSI	Intervention for Health
HP	Health Post
HW	Hand Washing
ICC	Inter Commune Council
IFAD	International Fund for Agricultural Development
IND	Industry
Inter-commune	Inter-Commune Project Management Committee or Inter-commune project
IO	International Organization
LASED	Land Allocation for Socio-Economic Development
LGCR	Local Governance for Children's Rights
M&E	Monitoring and Evaluation
MA	Medical Assistant
MoEYS	Ministry of Education, Youth and Sports
MoH	Ministry of Health

MoP	Ministry of Planning
MPA	Minimum Package of Activities
MW1	Primary Midwives
MW2	Secondary Midwives
n/a	Not available
NCD	National Contracts Database
NCDD	National Committee for Sub-National Democratic Development
NGO	Non-Governmental Organization
NRML	Natural Resources Management and Livelihood
NU1	Primary Nurse
NU2	Secondary Nurse
OD	Operational District
ODF	Open Defecation Free
Ope. Costs	Operational Costs
Others	Other Staff
PBW	Public Works
PDoEYS	Provincial Department of Education, Youth and Sport
PDRD	Provincial Department of Rural Development
PDWRM	Provincial Department of Water Resource and Meteorology
PE	Parenting Education
PHAST	Participatory Hygiene and Sanitation Transformation
PHD	Provincial Health Department
PID	Project Information Database
PMC	Project Management Committee
Pop 04-05	Population Covered 2004 or 2005
PSDD	Project to Support Democratic Development through Decentralization and Deconcentration
RRD	Rural Road Development
RH	Referral Hospital
RILGP	Rural Investment and Local Governance Project
RPRP	Rural Poverty Reduction Program
RuLIP	Rural Livelihoods Improvement Program
SIDA	Swedish International Development Cooperation Agency
SPPA	Senior Provincial Program Advisor
TBA	Traditional Birth Attendant
UNDP	United Nations Development Project
UNICEF	United Nations Children's Fund
Vil	Village
Vil Cov	Village Covered
VIL-HC	Distance from Village to Health Center
WASH	Water, Sanitation and Hygiene
WRM	Water Resource and Meteorology

Glossary

C/S Fund: The Commune/Sangkat Fund is established and managed by the Government of Cambodia to provide financial support for development projects and administrative costs of Commune/Sangkat Councils. The amount is determined as a percentage of the National Budget (for 2009: 2.8% over the 2008 budget) and is expected to increase gradually over the years. The total 2009 budget under this fund is \$ 27,643,902 (of which \$ 19,272,170 is for Development Projects and \$ 8,371,731 for Administration). Under the Rural Investment and Local Governance Project the World Bank currently reimburses the costs of development projects if these meet the Bank's criteria.

CDB: the Commune Data Base is a national database, compiled by the Ministry of Planning, on the basis of detailed questionnaires, completed at village and commune level, which are then sent to the Departments of Planning for data entry. The most recent round of data collection took place at the end of 2008 (and is reflected in the District Data Books). Commune, District and Provincial Profiles can be generated from this database and should be available from provincial Departments of Planning.

CDPD: the Commune Development and Planning Database is a database maintained by Departments of Planning and Ministry of Planning, recording proposed activities as determined and prioritized by Commune and Sangkat Councils; the Temporary Agreements between these councils and supporting agencies, as decided at District Integration Workshops and details on projects that actually take place at commune, district and provincial levels.

CIP: The Commune Investment Plan is a rolling three-year plan, developed and decided by the Commune or Sangkat Council. It sets priorities and identifies the projects proposed for the years to come.

Commune and Sangkat (C/S): the Communes (in rural areas) and Sangkats (in urban areas) are the lowest and smallest units of local government. Councils are elected directly, once in five years, for the 1417 Communes and 204 Sangkats. In the C/S there are 14,119 villages, which have Village Chiefs, but don't constitute a formal level of local government.

DIP: the District Initiative Project is jointly supported by the MDLF (Multi-Donor Livelihood Facility (supporting the NRM&L Program)) and PSDD. In 2009 it covers 106 districts, 60% of the total in the country, with a budget of \$ 3.2 million. It is focused on capacity development in planning, democratic development, public competitive procurement, financial management and service delivery.

DIS: The District Information System is a national database maintained by NCDD, recording resources, staff, revenue, infrastructure and equipment available in the 193 Districts and Khans throughout the country. The last update took place in July 2009.

District, Municipality and Khan constitutes the third level of Government in Cambodia. There are 159 rural Districts, 26 Municipalities and 8 Khans of Phnom Penh Capital. They all have Councils which were, for the first time, elected in May 2009, by the Commune/Sangkat Councilors. These councils have a mandate for 5 years.

DIW: District Integration Workshops are held between July and October, to bring Commune/Sangkat Councils, looking for support for their projects, together with the governmental and non-governmental agencies that may provide support.

ICC: Inter Communes Council projects are executed in 10 provinces under the Democratic and Decentralized Local Governance Project (DDLG). This five year project (2006-2010) is executed by Ministry of Interior and funded by the European Commission and UNDP. The project focuses on improving dialogue partnership and accountability; create a network of Commune Councils at the provincial and national level and support and contribute to local area development for poverty reduction. The work under the ICC component supports investments and services formulated through inter-commune dialogue and planning.

MEDiCAM: A non-profit and non-partisan membership organization for NGOs active in Cambodia's health sector. It is the primary networking agency for health-related NGOs.

NCDD: the National Committee for sub-National Democratic Development is the inter-ministerial body charged with the implementation of the Organic Law (a key legislative document, adopted in 2008, outlining the envisaged decentralization). NCDD also channels substantial financial assistance by a number of Development Partners, to projects and programs at various levels. This amounted to over \$ 91 million in 2008. More information at: www.ncdd.gov.kh. This website also provides access to reports, manuals, legal documents, details on projects and more.

OD: the Operational Districts are the districts as defined and used by the Ministry of Health. These do not coincide with the 193 (Administrative) Districts and Khans, as used by all other RGC agencies. The Operational Districts are usually larger, and so there are 77 Operational Districts against 193 administrative Districts and Khans. However they do fit within the boundaries of administrative provinces.

PID: The Project Information Database is the database maintained by NCDD at national and sub national level, to follow all aspects of projects by Commune and Sangkat Councils, including the C/S Fund projects

Provincial Investment Fund (PIF)

The Provincial Investment Fund is allocated to all Provinces and Municipalities according to a population based formula. Part of the fund is earmarked for support to planning activities of the Provincial / Municipal Department of Planning; and to gender mainstreaming activities of the Provincial Department of Women's Affairs. The remaining "un-earmarked PIF" is allocated by PRDC to sectoral technical departments against established criteria and in response to proposals with prioritisation taking into account: priorities formulated by the CS Councils and aggregated by District into District Priority Activities Matrices (DPAM); alignment with national planning and poverty alleviation criteria, complementarity with other planned activities; and performance of the Department concerned in implementation of activities in previous years. With this provisional allocation, the Department then programs activities through the District Integration Process. Finally, the agreed activities, plus support costs amounting to no more than 25% of the total, are included in a sub-contract signed between PRDC and the Department, pursuant to the overall PSDD contract signed between NCDD and PRDC. Total budget has been around \$ 2 million per year.

Province: the 23 Provinces and Phnom Penh Capital City represent the 2nd layer of government. They vary in size, from very small, like Kep (approx. 36,000 people) and Pailin (approx. 70,000 people), or large but with small populations, like Mondulkiri (over 60,000 people), and Ratanakiri (over 153,000) to densely populated and large, like Kampong Cham (over 1.7 million people) and Kandal (approx. 1.4 Million people).

PSDD: the Project to Support Democratic Development through Decentralization and Deconcentration is funded by DFID (UK), SIDA (Sweden) and UNDP and runs from 2006 till the end of 2010 (including a one year extension). Annual budgets range from \$ 11 million to over \$ 18 million. The project provides core technical support to NCDD and to the provinces, financial support to the C/S Fund, District Initiative, Provincial Investment Fund and capacity building support through training, studies and advisory services.

RILGP: The Rural Investment and Local Governance Project is a World Bank funded project that provides substantial support to C/S Fund projects and to developing the required infrastructure, policies, systems and skills. It started in 2003 with a Loan for \$ 22 million for 2003-2007 and was then extended with a Grant of \$ 36 million for the period of 2007-2010. Discussions about a possible RILGP 2 are taking place between RGC and the World Bank.

RPRP: the Rural Poverty Reduction Project is a seven year project from 2004 till 2010, funded by IFAD and UNDP and implemented through the Ministry of Agriculture, Forestry and Fishery, supported by the Ministry of Interior and facilitated by NCDD. The project is active in the provinces Prey Veng and Svay Rieng and focuses on 120,600 households below poverty line. The objective is poverty reduction with the active participation of the poor through improved livelihoods, Strengthened capacity, Sustainable farming systems and natural resource management, new and/or rehabilitated infrastructure development, increase accessibly to technology, services and markets for their economic and social development.

RULIP: the Rural Livelihoods Improvement Project is implemented by the Ministry of Agriculture Forestry and Fisheries (MAFF)' Project Support Unit- PSU, with the NCDD playing the role of cooperating agency. Funded by IFAD and UNDP, the project will run till 2014. The target group consists of poor households who have little or even no land, few livestock or other assets and often many dependents. The main goal of the project is to directly or indirectly improve the livelihood systems, food security and incomes of a total of 33,900 rural poor, ethnic minority and female headed households in targeted village of Kratie, Preah Vihear and Ratanakiri provinces in a sustainable manner.

Seth Koma: The UNICEF funded Seth Koma program focuses on measurable action for children and women. During 2006 -2010 it is implemented in six provinces. Government and UNICEF pursue a set of inter-related goals, addressing critical stages of the life cycle of the child: a) Mothers have safe pregnancies and deliveries and healthy newborns; b) best possible start in life of infant; c) Children enter schools at the right age of six years; d) Children are protected from exploitation, abuse, violence, discrimination and other risks; and e) Youth and adolescents acquire life skills, express their views, participate in the decisions.

Preface

The Government of Cambodia attaches great importance to optimal use of scarce resources and to participatory planning and management at all levels. The Organic Law which was adopted in 2008 provides the legal context for further steps towards improving and decentralizing planning, management and monitoring, and towards greater accountability and transparency of institutions at sub-national levels.

The Government has established elected Councils at the sub-national levels, and we will progressively give them the responsibilities, together with the human and financial resources, to deliver a wide range of public services. They will be more democratic, more efficient, more transparent and accountable, better at addressing gender and other inequalities, and at fighting corruption. We recognize that development does not come from government alone; it needs the involvement of citizens, civil society and the private sector, and the new system will facilitate this.

A central element in this process is the availability of information on any aspect of development to all concerned parties. The newly elected Councillors at District and Khan level, line departments operating at these levels, but also NGOs, Development Partners, Commune Councillors and citizens throughout Cambodia need information on problems and requirements, resources and opportunities, services and agencies, plans and projects. They will need such information to better understand the present situation, set targets for the future, monitor progress, know what others are doing and to apply resources wisely and this is the reason the District Data books will be so valuable.

The District Data Books are a major step towards full transparency and towards informed planning and decision-making. They provide all available data at District, Khan, Commune and Sangkat level in easily accessible formats, in Khmer and English, through over 16,000 printed copies, CD-ROMs and the NCDD website.

This is the first time in Cambodia (and possibly in South East Asia) that such detailed information is made so widely available and NCDD should be commended for the hard work that has gone into this. We also thank the Ministry of Planning, which provided the detailed data of the Commune Data Base, the sectoral ministries and provincial authorities who contributed data and the Development Partners who provided financial support.

It is our sincere hope that the publication of the District Data Books will strengthen capacities, especially at district levels, for evidence-based development planning. We also hope that this information will deepen the understanding among Ministries, Provincial Authorities, Development Partners, NGOs and research agencies of the realities at commune and district levels.

We call upon all to use and distribute this information, complement or correct where appropriate and to contribute new data in the years to come.

Sar KHENG

Deputy Prime Minister, Minister of Interior and Chairman of NCDD

Introduction

Purpose

The purpose of the District Data Books is to bring together information on any aspect of life and development of Districts, Khans, Communes and Sangkat, together and make this widely available. The primary targets are the newly elected District Councilors, district level line departments, provincial agencies, Development Partners and NGOs operating at this level. They need detailed knowledge on current living conditions, natural resources, infrastructure, agriculture and other economic activities, current service levels, past and planned projects and available resources.

While much information exists on many of the above aspects, it is often hard to access that information and much is lost to reports, databases and statistics that are not widely shared. Data are often only available in one language and often out-of-date, and many reports cover only one sector or region.

We found that these problems are especially acute at the district level. Now that Districts are becoming a much more significant level of local government and development planning, there is an urgent need for wide-ranging data to be used for setting base-lines, planning and prioritizing, monitoring and learning.

Approach

We have attempted to identify and compile all available statistics, reports, maps and other data at district and/or commune level. From this we have selected information that is available for all or most districts, reasonably reliable and up-to-date, sufficiently detailed and of possible interest to development planners, decision makers, agencies and citizens.

The major sources of the information in these District Data Books are:

- a) The Commune Data Base information over the years 2006 to 2009 (the most recent data were collected late last 2008), as compiled by the Ministry of Planning
- b) Detailed information directly collected from the Ministry of Health, the Ministry of Education, Youth and Sports and (for maps) the Ministry of Land Management, Urban Planning and Construction
- c) The Project Information Database (PID) at NCDD (up-to-date)
- d) The Commune Development and Planning Database (CDPD) (up to date)
- e) The District Information System (DIS) (updated per Mid 2009)
- f) Direct data collection at provincial and district level on private sector, irrigation, roads, and electricity, through provincial agencies
- g) Medical data collected from MEDiCAM
- h) The ID Poor Project – for poverty data on a number of provinces and districts
- i) NCDD's work on predictive poverty rates
- j) Specific projects for outputs, plans and budgets (Seth Koma, RILGP, RPRP and ICC)

Limitations of the data

We are fully aware that the data we collected are not always complete, consistent or correct. While we have rejected information that was wrong or very incomplete, we decided not to aim for statistical and scientific perfection, but to include information that is useful, relevant

and comprehensive. We also accepted different sources for the same data as this may encourage discussion on the quality of the respective data.

We strongly encourage anyone who notes errors or incompleteness in these data to contact us and to share their data. We hope that the next round of producing such District Data Books can draw on wider sources and more complete data.

We encourage the District Administrations, who receive these data also in digital format, not only to use these for their planning and monitoring, but also to start correcting and updating these data and to share new data with NCDD for future use.

Contents

The information in the following pages is organized in five sections:

- a) **Geographical data:** this section provides maps on infrastructure and administration and on land use and natural resources management. These maps are also provided in large format to all Districts and Khans.
- b) **District Profile:** this presents wide ranging data, covering 2006 – 2009, at district and commune level, extracted from the Commune Data Base, but edited for better understanding.
- c) **Plans and Projects:** this section presents development priorities determined by Commune and Sangkat Councils, Temporary Agreements, outputs and expenditure of major projects at Commune and District level over 2006 – 2008 and plans and budgets for 2009.
- d) **Services and Organizations:** this section provides details on key infrastructure (roads, electricity, irrigation systems) and services in health and education at district and commune level. It also provides an inventory of resources at the District Administration, NGOs operating in the district and private sector agencies active in the district.
- e) **Poverty Data:** this section provides predicted poverty rates for 2009 for all districts and communes and detailed poverty data compiled and processed by the ID Poor project for those that have been covered by this project.

The future

It is our hope that this is the start of a longer-term process. We hope that a next edition of these District Data Books will offer more comprehensive, correct and up-to-date information. We hope that the District Administrations will not only start using this information, but also improve and update it. For this they are all provided with the full data set in digital format.

We invite agencies, projects and experts to send reports, statistics and maps that could be used for a next version to us and we invite all users of the District Data Books to inform us about errors, updates and inconsistencies. Please contact us through info@ncdd.gov.kh

We now invite you to browse through this data book. You may open this randomly or use the table of contents and go to the aspects that have your special interest.

We hope that you will be informed, surprised and assisted. We hope, above all, that this information will lead to a deeper understanding of causes and effects of poverty, to purposeful decisions on how to tackle those causes and to greater transparency in using scarce resources for the benefit of all.

Martin de Graaf
Program Advisor, PSDD/NCD

SECTION A: GEOGRAPHY

1 Administration and Infrastructure

Please see separate folder containing A3 maps.

2 Land Use and Natural Resources

Please see separate folder containing A3 maps.

3 Geography

3.1 Land Area

Total Land Area (ha)	Forest Land Area (ha)		Cultivation Land Area (ha)	Construction Land Area (ha)	Other Land Area (ha)
	Total	Flooded Forest Area			
237300	218103	0	13465	2500	3232

3.2 Distances between Offices

Location	Distance (Km)
From District Office to C/S Office of Haong Samnam	20
From District Office to C/S Office of Reaksmei Sameakki	15
From District Office to C/S Office of Trapeang Chour	23
From District Office to C/S Office of Sangkae Satob	2
From District Office to C/S Office of Ta Sal	3

SECTION B: DISTRICT PROFILE¹

¹ All data in this section come from the Commune Database (CDB) unless otherwise specified. These include primarily new CDB data, collected late 2008, and some data from earlier years. Please note that percentages are rounded to the nearest whole number.

1 General Information

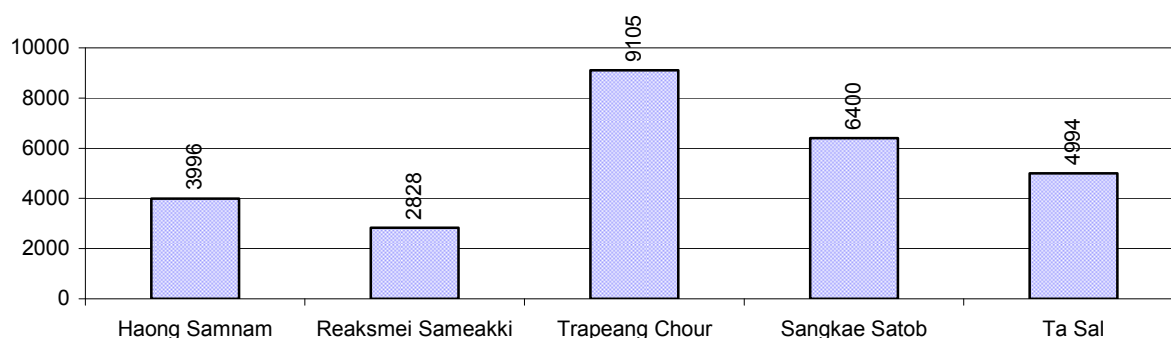
1.1 Population of the District

1.1.1 Total Population

Number of families	2005	2006	2007	2008
Total number of families	5,270 families	5,384 families	5,644 families	6,000 families
Increase (+)/Decrease (-) in nr of families		2%	5%	6%
Total population	24,280 pers	25,950 pers	28,141 pers	27,323 pers
Increase (+)/Decrease (-) in nr of people		7%	8%	-3%
Number of female Headed Households (HH)	834 families	770 families	708 families	803 families

Note: Percentages of population and increase/decrease are calculated on basis of the previous year. A negative sign in front of the percentage indicates a decrease in population.

1.1.2 Population, by Commune, in 2008



1.1.3 Population, by Age Group, over 3 years

Population by age group	2006	2007	2008	
	%	%	%	Number
Age 0-5 years (as percentage of the population)	21%	20%	20%	5,409 persons
Male 0-5 yrs	49%	50%	50%	2,699 persons
Female 0-5 yrs	51%	50%	50%	2,710 persons
Age 6-17 (as percentage of the population)	29%	30%	32%	8,621 persons
Male 6-17 yrs	49%	49%	49%	4,206 persons
Female 6-17 yrs	51%	51%	51%	4,415 persons
Age 18-60 (as percentage of the population)	46%	43%	44%	11,974 persons
Male 18-60 yrs	48%	48%	48%	5,791 persons
Female 18-60 yrs	52%	52%	52%	6,183 persons
Age 61 above (as percentage of the population)	4%	6%	5%	1,319 persons
Male 61	43%	45%	45%	593 persons
Female 61	57%	55%	55%	726 persons

Note: The overall percentage for each age group is calculated on the basis of the total population. The gender distribution of each group is calculated on the basis of the population within that particular age group.

1.2 Occupations

1.2.1 Percentage of families with a particular Occupation over 3 years

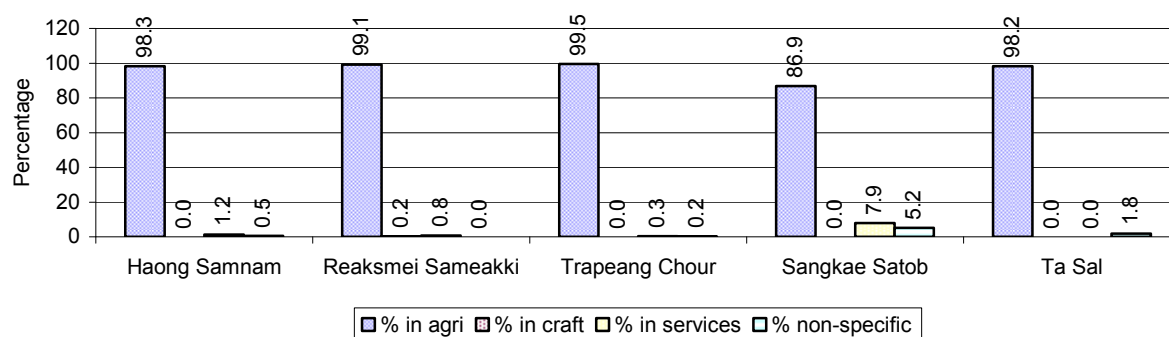
This table shows the percentage of the population who have a particular occupation (job), for example the percentage of the population in the district who are rice farmers, furniture crafter, trader, etc.

Description	2006	2007	2008	
	%	%	%	Number
Families whose main occupation is agriculture	96%	98%	96%	5,780 Families
Families whose primary occupation is rice farming	95%	96%	96%	5,737 Families
Families whose primary occupation is cultivating long-term crops	0%	0%	0%	0 Families
Families whose primary occupation is cultivating short-term crops	1%	1%	0%	0 Families
Families whose primary occupation is cultivating vegetable	0%	0%	0%	2 Families
Families whose primary occupation is fisherman	0%	0%	0%	0 Families
Families whose primary occupation is livestock farmer	0%	0%	0%	24 Families
Families whose primary occupation is NTFP collection	0%	0%	0%	17 Families
Families whose main occupation is craft work	0%	0%	0%	1 Families
Families, whose main occupation is in furniture craft, wooden, rattan, vine, bamboo	0%	0%	0%	1 Families
Families whose main occupation is in metal, aluminum, glass goods production	0%	0%	0%	0 Families
Families whose main occupation is food production	0%	0%	0%	0 Families
Families whose main occupation is tire, plastics and rubber goods production	0%	0%	0%	0 Families
Families whose main occupation is textile, clothing goods production	0%	0%	0%	0 Families
Families whose main occupation is in other production, not listed above	0%	0%	0%	0 Families
Families whose main occupation is services	2%	1%	2%	123 Families
Families whose main occupation is trade	1%	0%	1%	43 Families
Families whose main occupation is repair	0%	0%	0%	22 Families
Families whose main occupation is providing transport services	0%	0%	0%	9 Families
Families whose main occupation is providing other services	0%	0%	1%	49 Families
Families whose main occupation is not clear (or multi)	2%	1%	2%	96 Families

Note: The occupation percentages are calculated on the basis of the total number of families.

1.2.2 Percentage Families that work in one of four occupational sectors, by Commune in 2008

This table indicates the percentage of families involved in one of four occupation types: agriculture, craft, services or non-specific (other). Please note agriculture includes forestry activities such as cutting down trees and gathering gum from the trees.



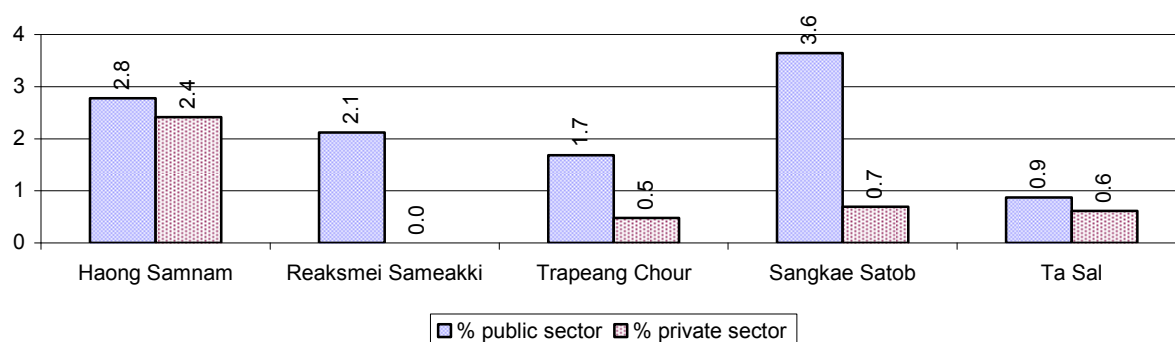
Note: Calculated on the basis of the total number of families within a commune.

1.2.3 Percentage of Families with public Sector, private Sector or uncertain Jobs, over 3 years

Description	2006	2007	2008	
	%	%	%	Number
Families that have a family member who is a government official, staff or worker	1%	2%	2%	129 families
Families that have a family member who is a private sector staff or worker	1%	1%	1%	46 families
Number of people aged 18-60 with uncertain/irregular jobs	4%	3%	1%	79 persons

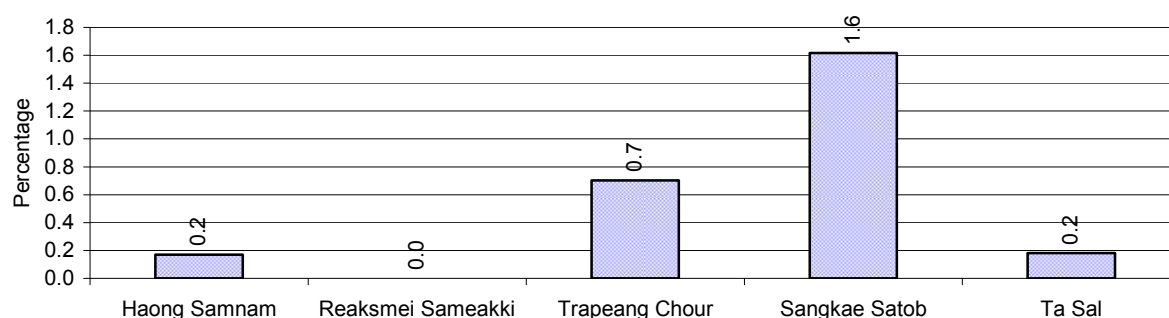
Note: In the first two rows percentages are calculated on the basis of the total number of families. In the third row the percentage is calculated on the basis of the total number of people aged 18-60 years.

1.2.4 Percentage of Families with public or private Sector Jobs, by Commune in 2008



Note: Calculated on the basis of the total number of families in the commune

1.2.5 Percentage of People aged 18-60 years with uncertain/irregular Jobs, by Commune, in 2008.



1.3 Property

1.3.1 Housing types and facilities over 3 years

This table shows the percentage of people living in a certain type of house. It also indicates how many houses have electricity or battery powered lights and how many have TV.

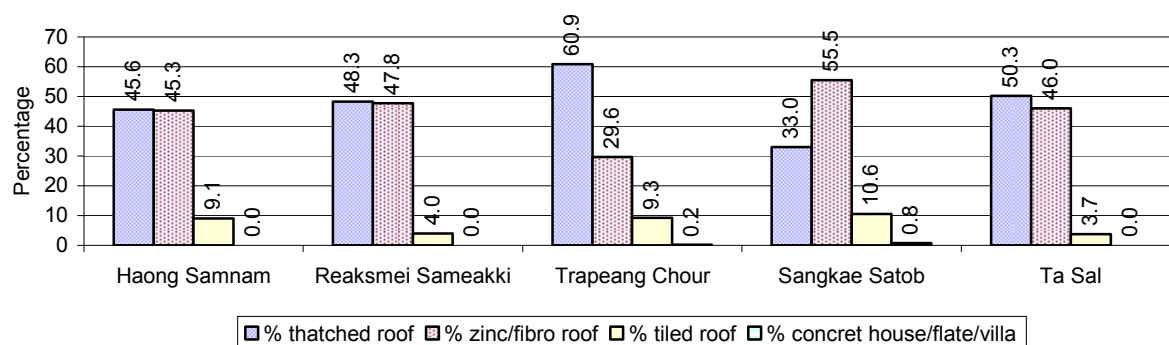
House Type	2006	2007	2008	
	%	%	%	Number
House with thatched roof	65 %	59 %	49 %	2,893 houses
House with zinc/fibro roof	31 %	36 %	43 %	2,498 houses
House with tiled roof	3 %	5 %	8 %	464 houses
Flats/apartments (with many families living)	0 %	0 %	0 %	8 houses
Concrete house or flat (with one family living)	1 %	0 %	0 %	7 houses
Villa house	0 %	0 %	0 %	0 houses
Houses with electricity	1 %	1 %	1 %	50 houses
Houses with battery light	35 %	48 %	51 %	2,980 houses
Houses with TV	28 %	30 %	39 %	2,308 houses

Note: Calculated against the total number of houses

1.3.2 Families living on public Land or without a permanent House

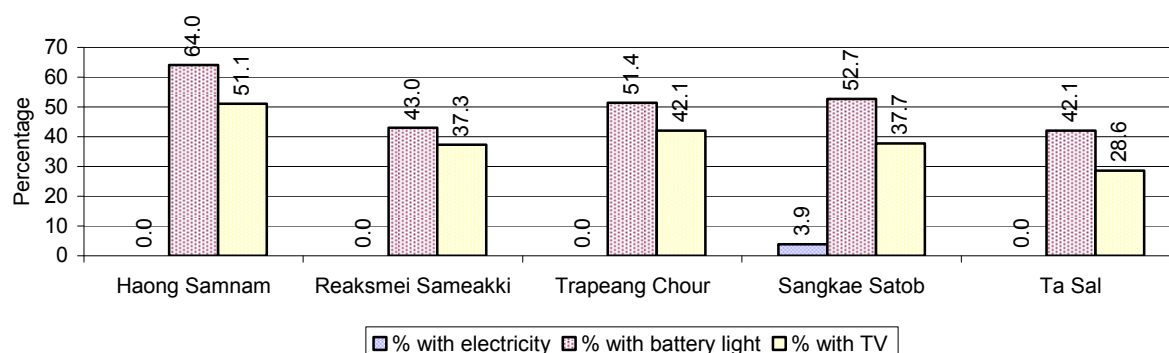
Living situation	2006	2007	2008
Families living in a house on public land	24 families	8 families	17 families
People, without permanent housing	18 person(s)	9 person(s)	19 person(s)

1.3.3 Percentage of Population living in a particular type of House, by Commune, in 2008



Note: Calculated against the total number of houses in each commune

1.3.4 Percentage of Houses with Electricity, Battery Lights and/or TVs, by Commune, in 2008



Note: Calculated against the total number of houses in each commune

1.3.5 Types of Vehicles and their ratio to Families across 3 years

This table shows the number of families per vehicle in the district. The last column shows the total number of each type of vehicle in the district for 2008.

Description	2006 ratio	2007 ratio	2008	
			Ratio	Number
Bicycle and bicycle with trailer	3	2	2	2,766
Ox-carts and horse-carts	2	2	2	3,262
Motorbike/with trailer	6	4	3	2,019
Motor tri-cycle	N/A	N/A	N/A	0
Large Transportation				
Total number of cars/trucks	54	54	41	145
Locally made vehicles	2,692	5,644	1,500	4
Trucks for goods transport	79	76	73	82
Buses/mini buses for passengers	897	627	1,000	6
Family cars	234	282	113	53
Agriculture machinery				
Tractors used for plowing	2,692	2,822	750	8
Power-tillage used for plowing	9	8	7	819
Other type of machinery				
Other type of machinery	269	217	143	42
Water transportation				
Row boats	5,384	5,644	N/A	0
Total number of motor boats	N/A	N/A	N/A	0
Motor boats used for fishing	N/A	N/A	N/A	0
Motor boats used for passengers	N/A	N/A	N/A	0
Motor boats used for goods transporting	N/A	N/A	N/A	0

Note: Ratio of families to a particular type of vehicle is the result of the total number of families divided by total number of that type of vehicle. Other types of vehicles, such as bulldozer, excavator, rollers etc. are not listed.

2 Infrastructure and Economy

2.1 Roads in meters over 3 years

Description	2006	2007	2008
Bituminous road	0 m	0 m	0 m
DBST, Macadam road	0 m	0 m	0 m
Concrete road	0 m	0 m	0 m
Laterite road	0 m	22,335 m	33,000 m
Constructed earth road	16,640 m	21,780 m	26,099 m
Un-constructed earth road	0 m	3,500 m	8,500 m

2.2 Sewerage Pipes in meters over 3 years

Description	Sewage pipe length		
	2006	2007	2008
Total length of sewage pipe, diameter 30-50 cm	0 m	80 m	80 m
Length of newly constructed sewage pipe, diameter 30-50 cm	0 m	80 m	0 m
Length of sewage pipe, diameter 30-50 cm needs repair/rehabilitation	0 m	0 m	0 m
Total length of sewage pipe, diameter of pipe 60-100 cm	0 m	0 m	0 m
Length of newly constructed sewage pipe, diameter 60-100 cm	0 m	0 m	0 m
Length of sewage pipe, diameter 60-100 cm needs repair/rehabilitation	0 m	0 m	0 m
Sewage pipe, diameter of pipe over 100 cm	0 m	0 m	0 m
Length of newly constructed sewage pipe, diameter over 100 cm	0 m	0 m	0 m
Length of sewage pipe, diameter over 100 cm needs repair/rehabilitation	0 m	0 m	0 m

2.3 Drainage and Bridges

Construction Type	2006		2007		2008	
	place(s)	Length	place(s)	Length	place(s)	Length
Single pipe culvert	0	0m	0	0 m	10	6,029 m
Double-pipe culvert	0	0m	0	0 m	7	60 m
Box pipe culvert	0	0m	0	0m	0	0 m
Wooden bridge	0	0m	0	0m	1	35 m
Concrete bridge	0	0m	0	0m	0	0 m
Bale bridge	0	0m	0	0m	0	0 m
Spillway construction	0	0m	0	0m	4	45 m

2.4 Services in the District

Descriptions	Number of places by year		
	2006	2007	2008
Public			
Electricity generating stations	1	1	11
Health clinics	0	0	0
Private			
Bicycle and motorcycle repair places	7	17	19
Agricultural machinery, tools and equipment repair places	2	6	6
Electronic tool repair places	0	1	2
Battery-charging services	20	27	27

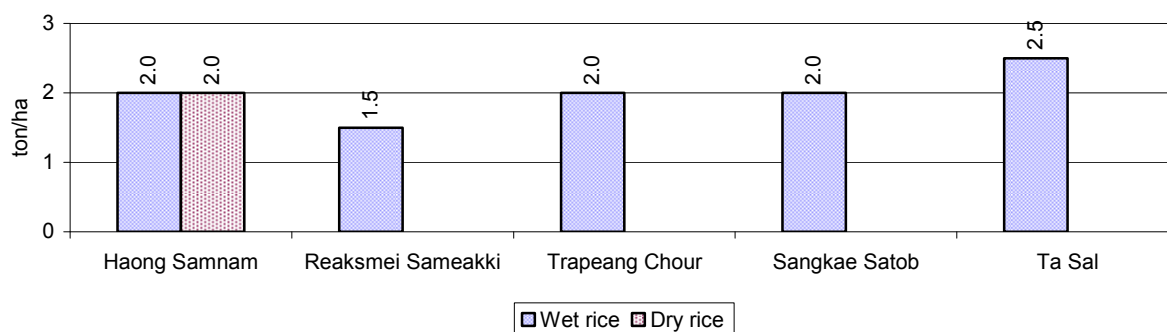
Descriptions	Number of places by year		
	2006	2007	2008
Handicraft places, wooden furniture and forest by-products	0	14	15
Other handicraft places (excluding furniture)	6	0	6
Small-scale services (hairstresser, phone service, massage, Karaoke, etc)	6	16	3
Small-scale food shop businesses (Food, groceries, drink shop, etc)	8	36	12
Small-scale rice mills	155	129	151
Medium or large-scale rice mills	0	1	0
Small-scale markets	2	2	54
Large-scale market	0	0	0
Alcohol refinery places	35	14	34
Pharmacies and small drug stores	0	0	5
Hotels	0	0	0
Guest houses	0	0	1
Restaurants	0	0	0
Gasoline stations	0	0	0

2.5 Agriculture

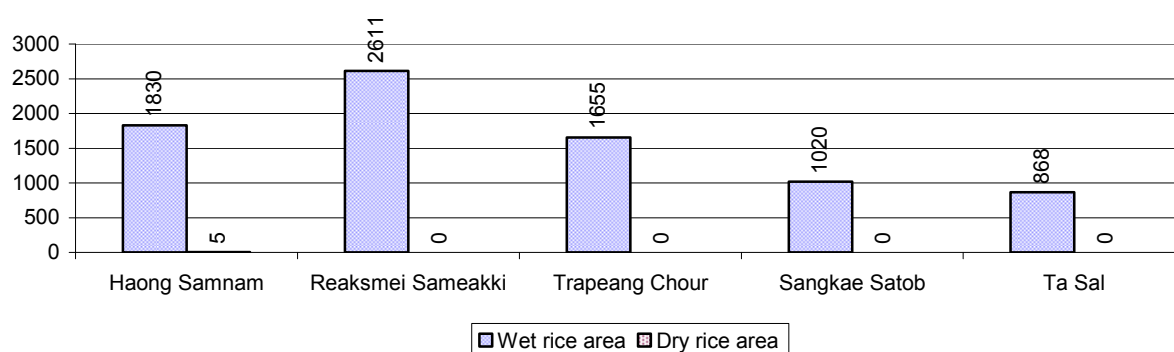
2.5.1 Rice cultivation in the District over 3 years

Description	2006	2007	2008
Total dry rice land area	0 ha	0 ha	15 ha
Actual dry rice cultivation area	0 ha	0 ha	5 ha
% actual cultivation to total land	-%	-%	33%
Total dry rice production	- tonne(s)	- tonne(s)	10 tonne(s)
Average dry rice yield	- tonne(s)/ha	- tonne(s)/ha	2.0 tonne(s)/ha
Total wet rice land area	12,653 ha	11,291 ha	12,298 ha
Actual wet rice cultivation area	5,272 ha	7,881 ha	7,984 ha
% actual cultivation to total land	42 %	70%	65%
Total wet rice production	8,646.08 tonne(s)	17,338.20 tonne(s)	15,968.00 tonne(s)
Average wet rice yield	1.6 tonne(s)/ha	2.2 tonne(s)/ha	2.0 tonne(s)/ha
Total intensive rice land area	8 ha	500 ha	171 ha
Actual intensive rice cultivation area	- ha	1,500 ha	384 ha
Average intensive rice yield	- tonne(s)/ha	3.0 tonne(s)/ha	2.3 tonne(s)/ha
Actual upland rice cultivation area	15 ha	380 ha	104 ha
Total upland rice production	15 tonne(s)	751 tonne(s)	185 tonne(s)
Average upland rice yield	1.0 tonne(s)/ha	2.0 tonne(s)/ha	1.8 tonne(s)/ha

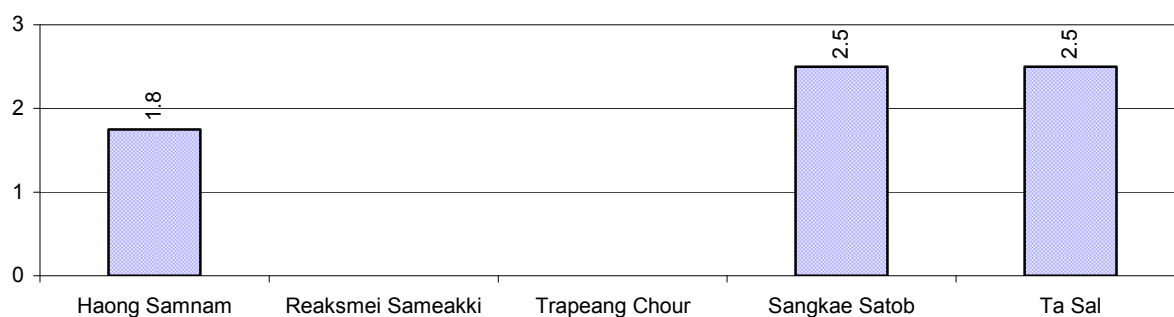
2.5.2 Estimated wet and dry Season Rice Yield in tonne(s)/Ha, by Commune, in 2008



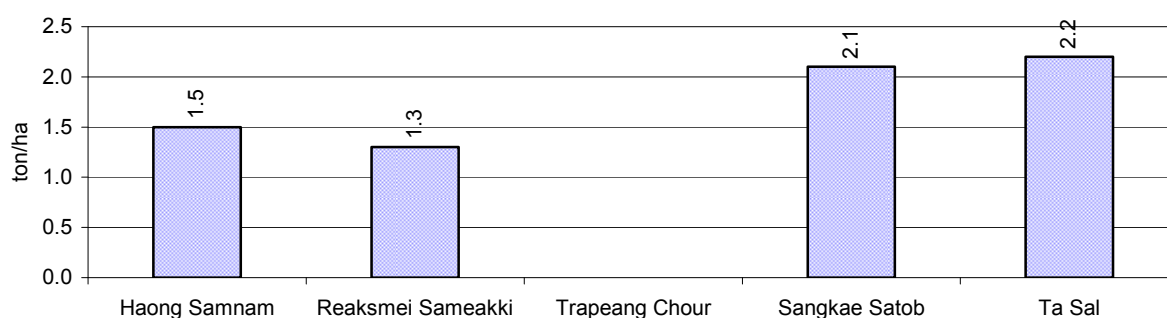
2.5.3 Cultivated wet and dry Season Rice areas in Ha, by Commune, in 2008



2.5.4 Estimated intensive Rice Yields in tonnes/Ha, by Commune, for 2008



2.5.5 Estimated upland Rice Yield in tonnes/Ha, by Commune, for 2008

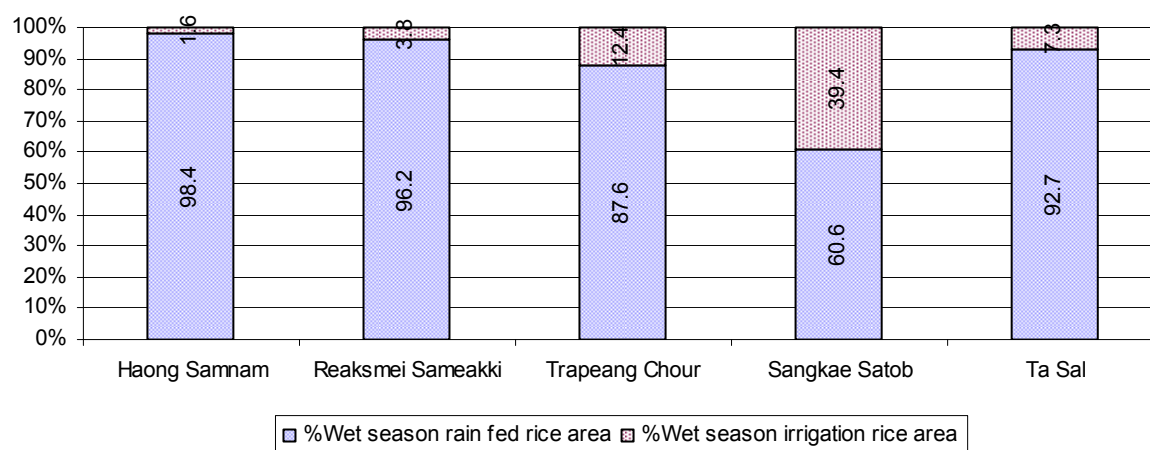


2.5.6 Wet season Rice irrigation across 3 years

Description		2006 %	2007 %	2008	
				%	Number
Total area of wet season rain fed rice land		97%	94%	90 %	7,184 ha
Percentage of wet season rice land that is irrigated; and for 2008 area in Ha		3 %	6 %	10 %	800 ha
Where	Area irrigated from canal/dam	82 %	94 %	100 %	800 ha
	Area irrigated from river, stream, lake, natural pond	0 %	0 %	0 %	0 ha
	Area irrigated from drilled well	18 %	6 %	0 %	0 ha
	Area irrigated from dug pond	0 %	0 %	0 %	0 ha

2.5.7 Water sources for wet Season Rice Cultivation, by Commune, in 2008

This chart shows the percentage of wet season rice cultivation receiving water from rain (natural) and from irrigation.



2.5.8 Access to Irrigation

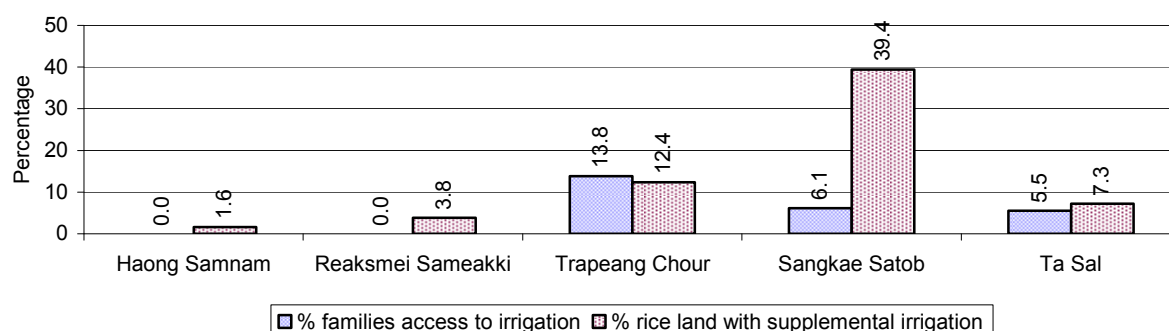
Description	2006 %	2007 %	2008	
			%	Number
Families who have access to irrigation water	8%	12%	7%	413 families
Families who have irrigation wells	1%	0%	0%	0 families

Note: Calculated against the total number of families are rice farmers

2.5.9 Number of Irrigation Wells over 3 years

Description	2006	2007	2008
Number of irrigation wells	24 wells	0 wells	0 wells

2.5.10 Percentage of Families with access to (supplemental) Irrigation for wet Season Rice cultivation, by Commune, in 2008



Note: % of families, with access to irrigation is calculated against the total number of families, whose main occupation is rice farming. Irrigated wet rice land area is calculated against the total actual wet rice land cultivated areas

2.5.11 Irrigation Wells, by Commune, in 2008

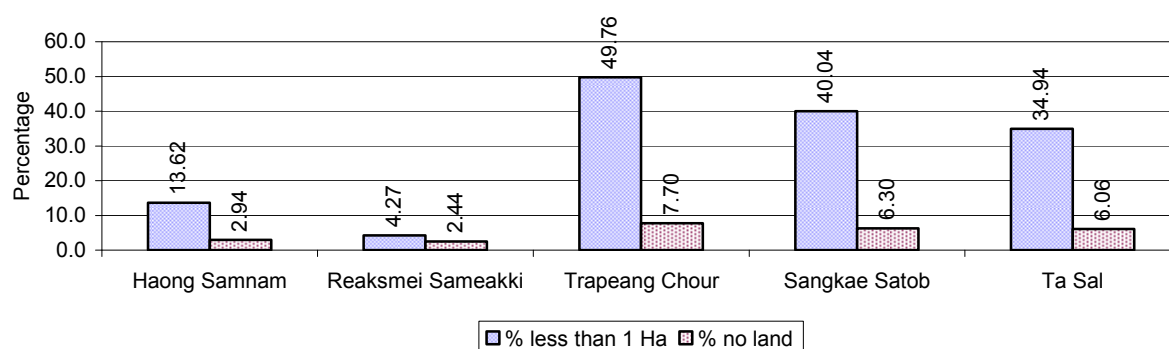
There are no irrigations wells in this District in 2008

2.5.12 Farmers owning less than one hectare of Rice Land

Description	2006 %	2007 %	2008	
			%	Number
Families who have less than one hectare of rice land	39%	42%	35%	1,991 families
Families who do not own any rice land	7%	5%	6%	335 families

Note: Calculated on basis of total number of families who are rice farming

2.5.13 Percentage of Farmers with less than one Hectare or no Rice Land, by Commune, in 2008

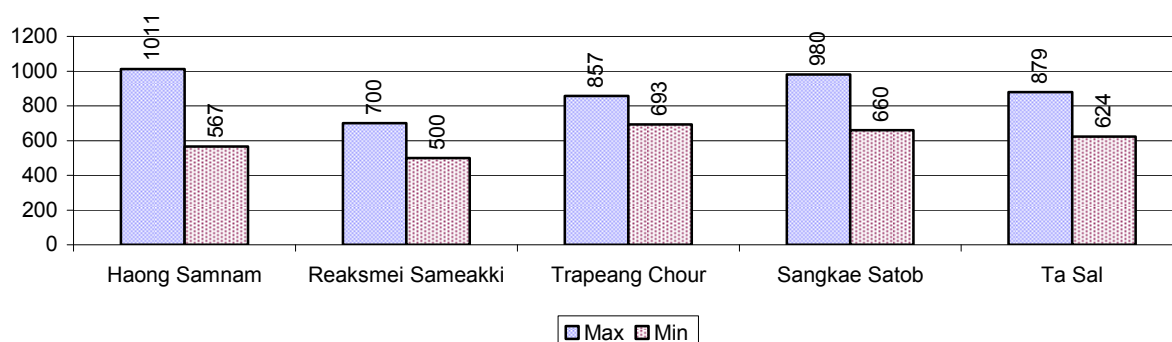


Note: Calculated on basis of total number of families who are rice farming

2.5.14 Average farm-gate Prices of Rice, over 3 years

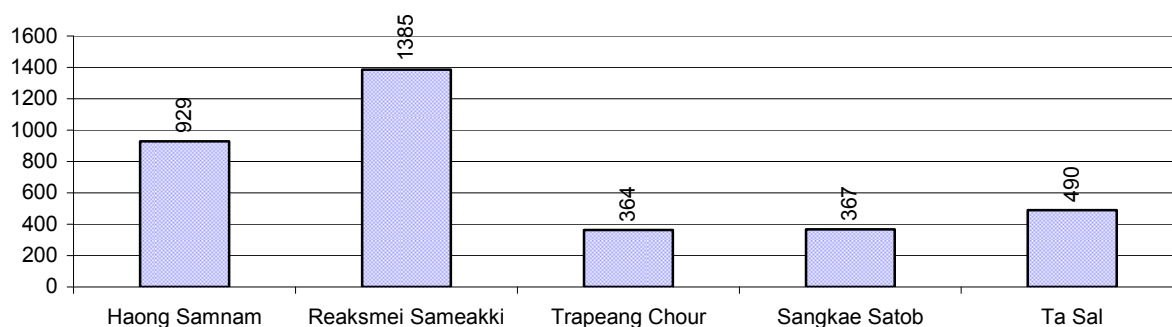
Description	2006	2007	2008
Maximum average farm gate price	540 Riels/Kg	717 Riels/Kg	885 Riels/Kg
Minimum average farm gate price	427 Riels/Kg	568 Riels/Kg	609 Riels/Kg
Average farm gate price	484 Riels/Kg	642 Riels/Kg	747 Riels/Kg
Average rice production per person	334 Kg/person	696 Kg/person	606 Kg/person

2.5.15 Minimum and maximum farm-gate Prices of Rice in Riel/kg, by Commune, in 2008



2.5.16 Production of Paddy in Kgs/Person, by Commune, in 2008

This table shows how much paddy (harvested rice) is produced in a year in a commune, in kgs per person.

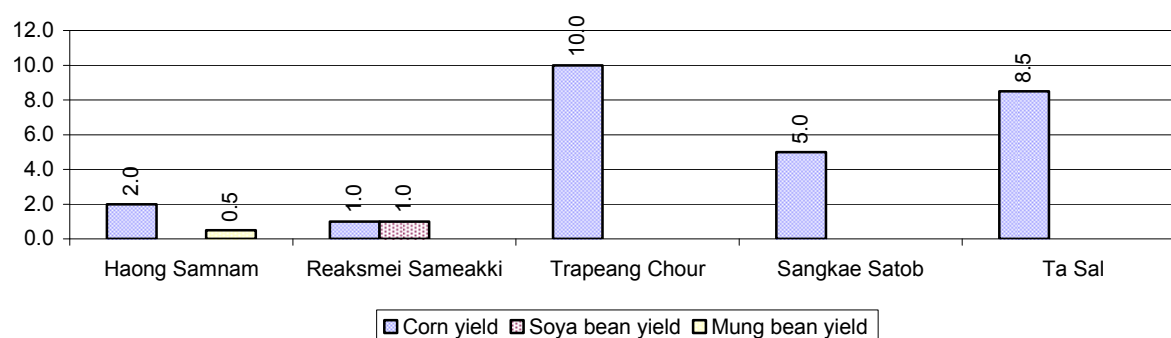


2.5.17 Production of other Crops, over 3 years

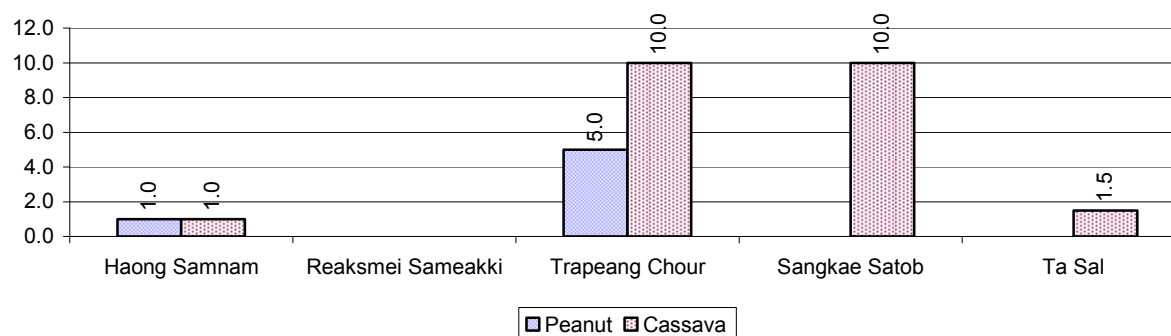
Crops	2006	2007	2008
Corn cultivation area	136 ha	387 ha	151 ha
Estimated corn yield	1.2 tonne(s)/ha	1.6 tonne(s)/ha	5.3 tonne(s)/ha
Estimated corn production	166 tonne(s)	600 tonne(s)	800 tonne(s)
Soya bean cultivation area	0 ha	0 ha	1 ha
Estimated Soya bean yield	- tonne(s)/ha	- tonne(s)/ha	1.0 tonne(s)/ha
Estimated Soya bean production	- tonne(s)	- tonne(s)	1 tonne(s)
Mungbean cultivation area	3 ha	26 ha	3 ha
Estimated Mungbean yield	0.5 tonne(s)/ha	1.5 tonne(s)/ha	0.5 tonne(s)/ha
Estimated Mungbean production	1 tonne(s)	39 tonne(s)	2 tonne(s)
Peanut cultivation area	13 ha	0 ha	8 ha
Estimated Peanut yield	1.3 tonne(s)/ha	- tonne(s)/ha	3.0 tonne(s)/ha
Estimated Peanut production	18 tonne(s)	- tonne(s)	24 tonne(s)
Cassava cultivation area	54 ha	134 ha	47 ha
Estimated Cassava yield	2.2 tonne(s)/ha	5.9 tonne(s)/ha	5.6 tonne(s)/ha
Estimated Cassava production	119 tonne(s)	787 tonne(s)	264 tonne(s)
Sweet potatoes cultivation area	45 ha	39 ha	18 ha

Crops	2006	2007	2008
Estimated Sweet potatoes yield	2.2 tonne(s)/ha	4.8 tonne(s)/ha	2.9 tonne(s)/ha
Estimated Sweet potatoes production	99 tonne(s)	189 tonne(s)	53 tonne(s)
Sesame cultivation area	0 ha	0 ha	1 ha
Estimated Sesame yield	- tonne(s)/ha	- tonne(s)/ha	0.5 tonne(s)/ha
Estimated Sesame production	- tonne(s)	- tonne(s)	1 tonne(s)

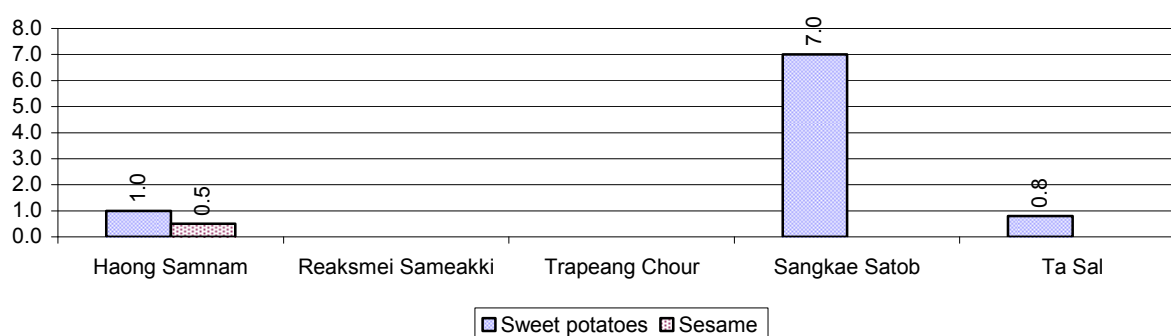
2.5.18 Yields of Corn, Soya beans and Mungbeans in tonne(s)/ha, by Commune, in 2008



2.5.19 Yields of Peanuts and Cassava in tonne(s)/ha by Commune, in 2008



2.5.20 Yields of Sweet Potatoes and Sesame in tonne(s)/ha, by Commune, in 2008



2.5.21 Percentage Farmers who own less than 1 Ha or no Chamkar land

Description	2006 %	2007 %	2008	
			%	Number
Families, who own less than 1ha of Chamkar land	39%	21%	0%	0 families
Families, with no Chamkar land	4%	0%	0%	0 families

Note 1: Calculated as a percentage of the total number of families whose main occupation is Chamkar (not rice) farming

Note 2: Chamkar land is no-rice land, i.e. other crops

2.5.22 Percentage Farmers owning less than 1 ha or no Chamkar land, by Commune, in 2008

There were no Farmers owning less than 1 ha or no Chamkar land in this District in 2008

Note: Percentage is calculated among families, who Chamkar farm as a main occupation, not the total population of the commune.

2.5.23 Percentage of Families raising Cattle/Buffalo, over 3 years

Description	2006 %	2007 %	2008	
			%	Number
Families raising cattle/buffalo	87%	86%	87%	5,247 families
Families raising cattle/buffalo as labor forces	73%	71%	72%	4,343 families

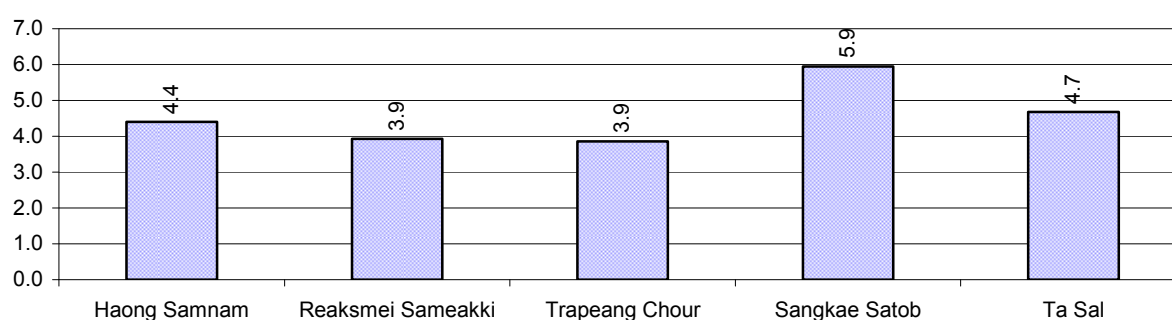
Note: Calculated against the total number of families.

2.5.24 Number of Cattle/buffalo being raised, over 3 years

Description	2006	2007	2008
Total number of cattle/buffalo	18,167 head(s)	19,106 head(s)	23,739 head(s)
Average cattle/buffalo per families	3.9 head(s)/families	3.9 head(s)/families	5 head(s)/families

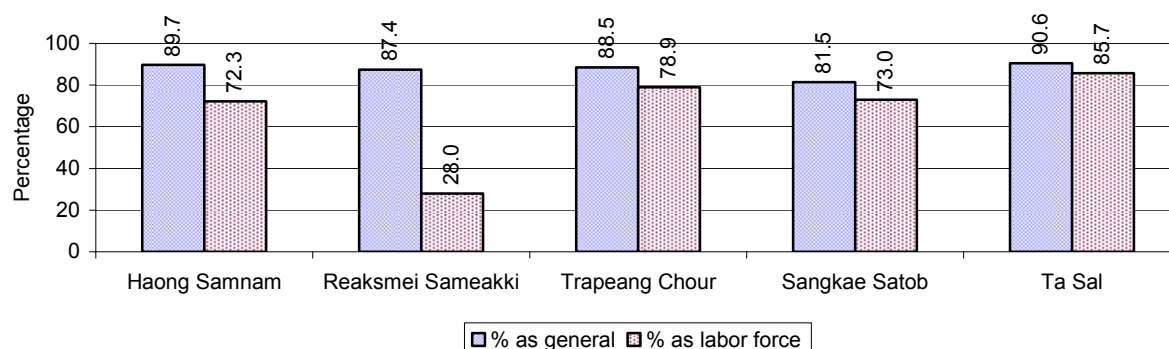
Note: Calculated by dividing total number of cattle/buffalo by total number of cattle/buffalo raising families

2.5.25 Average number of Cattle/Buffalo per Family, by Commune, in 2008



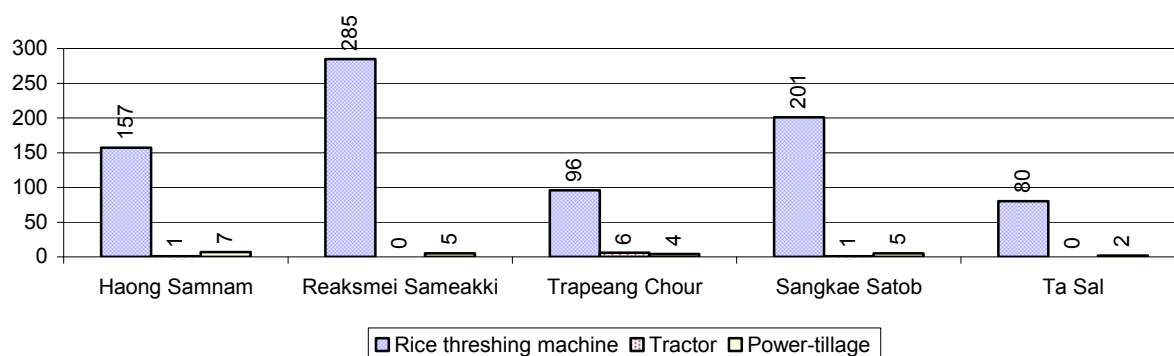
Note: Calculated by dividing total number of cattle/buffalo by total number of cattle/buffalo raising families

2.5.26 Percentage Families raising Cattle/Buffalo, for general and labor purposes in 2008, by Commune



Note: Calculated using the total number of families raising cattle/buffalo against the total number of families.

2.5.27 Type and number of agricultural Machines, by Commune, in 2008

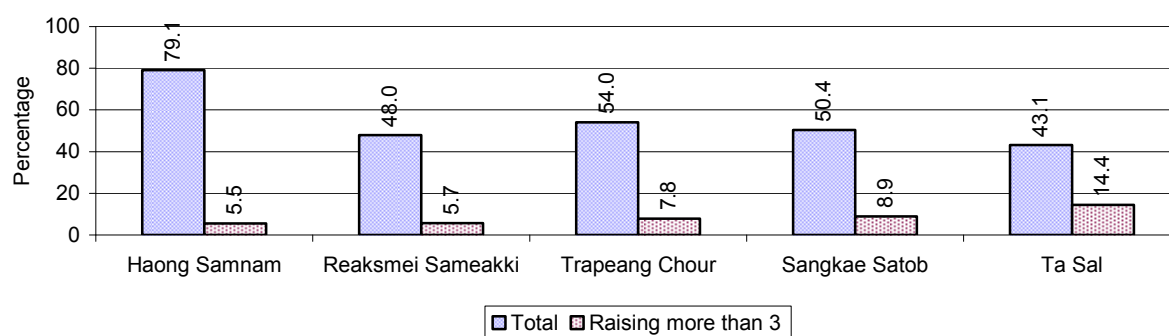


2.5.28 Livestock-producing Households over 3 years

Description	2006 %	2007 %	2008	
			%	Number
Total number of families raising pigs	59%	57%	54%	3,238 families
number of families raising more than 3 pigs	7%	7%	9%	526 families
Total number of families raising chickens	85%	81%	86%	5,171 families
number of families raising more than 3 chickens	74%	67%	70%	4,203 families
Total number of families raising ducks	5%	3%	2%	142 families
number of families raising more than 5 ducks	4%	2%	2%	95 families
Total number of families raising goats or sheep	0%	0%	0%	3 families
Total number of families raising horses	0%	0%	0%	2 families

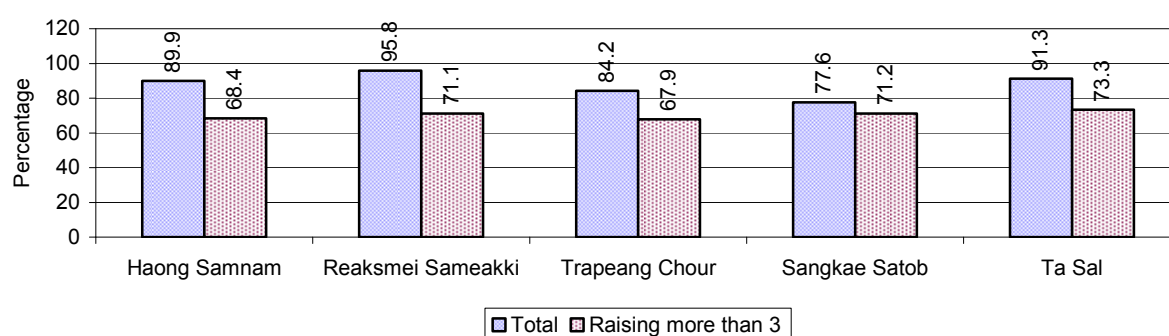
Note: Calculated against the total number of families

2.5.29 Percentage Families raising Pigs, by Commune, in 2008



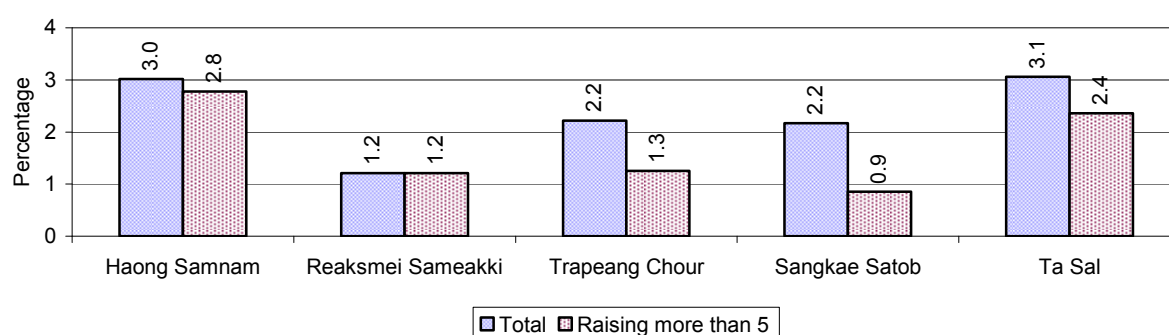
Note: Calculated against the total number of families in the commune

2.5.30 Percentage Families raising Chickens, by Commune, in 2008



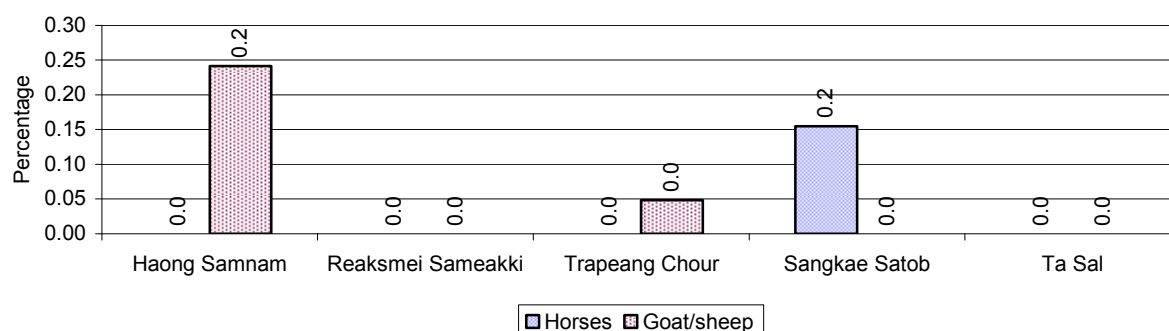
Note: Calculated against the total number of families in the commune

2.5.31 Percentage Families raising Ducks, by Commune, in 2008



Note: Calculated against the total number of families in the commune

2.5.32 Percentage Families raising Horses, Goats or Sheep, by Commune, in 2008



Note: Calculated against the total number of families in the commune

2.5.33 Livestock Farms over 3 years

Description	2006	2007	2008
Number of cattle/buffalo farms	1 farm(s)	0 farm(s)	0 farm(s)
Number of pig farms	5 farm(s)	0 farm(s)	0 farm(s)
Number of goat/sheep farms	0 farm(s)	0 farm(s)	0 farm(s)
Number of chicken farms	2 farm(s)	1 farm(s)	0 farm(s)
Number of duck farms	0 farm(s)	0 farm(s)	0 farm(s)

2.5.34 Number Livestock Farms, by Commune in 2008

There were no farms of this type in this District in 2008

Note: Number of farms are recorded by the village chief, not by counting number of livestock in each farm

2.5.35 Number Chicken and Duck Farms, by Commune, for 2008

There were no farms of this type in this District in 2008

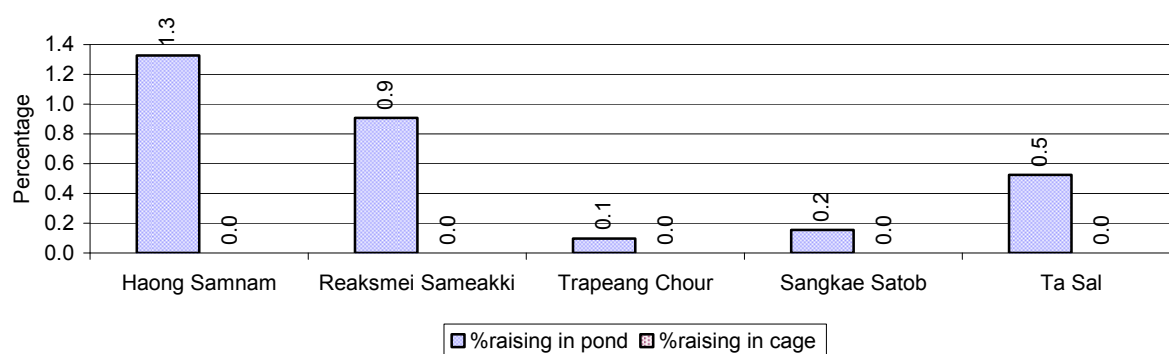
Note: Number of farm places recorded by village chief, not by counting number of livestock in each farm

2.5.36 Families raising Fish over 3 years

Description	2006	2007	2008
Total number of families raising fish	13 families	17 families	27 families
% families raising fish	0%	0%	0%
Number families raising fish in pond	13 families	17 families	27 families
% families raising fish in pond	0%	0%	0%
Number fish pond	15 pond(s)	17 pond(s)	27 pond(s)
No. of ponds per family	1.2 pond/families	1.0 pond/families	1.0 pond/families
Number of families raising fish in cage	0 families	0 families	0 families
%families raising fish in cage	0%	0%	0%
Number of fish cage	0 cage(s)	0 cage(s)	0 cage(s)
No. of fish cage per family	- cage /families	- cage /families	- cage /families

Note: % of families raising fish or fish in ponds or cages is calculated a percentage of the total number of families.

2.5.37 Percentage of Families raising Fish, by Commune, in 2008



Note: Calculated as a percentage of the total number of families in the commune.

2.5.38 Shrimp and Prawn Farming over 3 years

Description	2006	2007	2008
Number of families raising shrimps	0 families	0 families	0 families
% Families raising shrimps	0%	0%	0%
Number of shrimp ponds	0 pond	0 pond	0 pond
Total area raising shrimps	0 ha	0 ha	0 ha
Area per family	-ha/families	-ha/families	-ha/families
Number of families raising prawns	0 families	0 families	0 families
% families raising prawns	0%	0%	0%
Number prawn ponds	0 pond	0 pond	0 pond
Ponds per families	- pond/families	-pond/families	-pond/families
Number of prawn cages	0 cage	0 cage	0 cage
Cages per families	0 cage /families	0 cage /families	0 cage /families

Note: Percentage of families raising either prawns or shrimp is calculated against the number of families, who do aquaculture farming, NOT the total population.

2.5.39 Numbers of Families raising Shrimps and number of Shrimp Ponds, by Commune, in 2008

There were none of these in this District in 2008

2.5.40 Number of Families raising Prawn and Number of Prawn Ponds/Cages, by Commune, in 2008

There were none of these in this District in 2008

3 Social Aspects

3.1 Education

3.1.1 Kindergarten in the District over 3 years

Description	2006	2007	2008
Number of community kindergarten schools	0 school(s)	0 school(s)	2 school(s)
Number of community kindergarten class rooms	0 room(s)	0 room(s)	2 room(s)
Number of community kindergarten classes	0 class(es)	0 class(es)	2 class(es)
Number of community kindergarten teachers	0 person(s)	0 person(s)	2 person(s)
Number of women community kindergarten teachers	0 women	0 women	2 women
Number of state and private kindergarten schools	0 school(s)	1 school(s)	1 school(s)
Number of state and private kindergarten class rooms	0 room(s)	1 room(s)	1 room(s)
Number of state and private kindergarten classes	0 class(es)	1 class(es)	1 class(es)
Number of state and private kindergarten teachers	0 person(s)	1 person(s)	2 person(s)
Number of women state and private kindergarten teachers	0 women	0 women	2 women

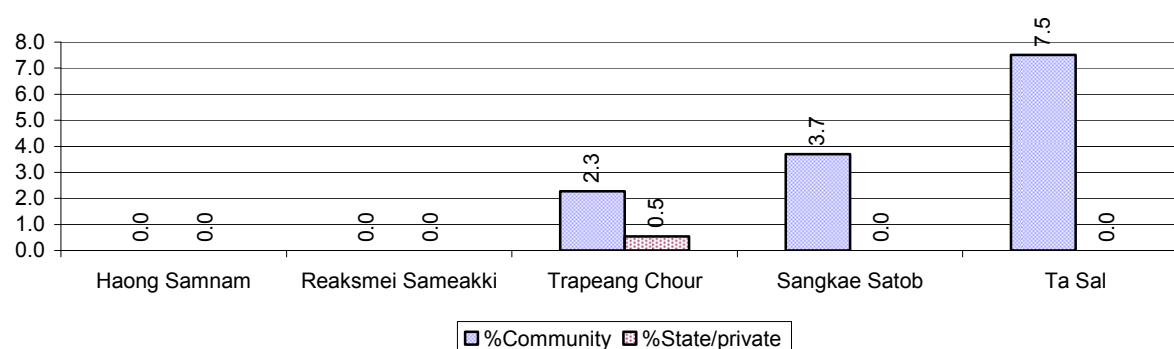
3.1.2 Percentage enrolment at Kindergarten level over 3 years

This table shows the percentage of the total 3-5 year old population attending kindergarten.

Description	2006 %	2007 %	2008	
			%	Number
Total percentage of children, 3-5 yrs, go to kindergarten	0%	6%	3%	104 person(s)
Percentage of children, 3-5 yrs, go community kindergarten	0%	2%	3%	98 person(s)
Percentage children, 3-5 yrs, go state/private kindergarten	0%	4%	0%	6 person(s)

Note: Calculated against the total for that age group

3.1.3 Percentage of Children 3-5 yrs attending Kindergarten, by Commune, in 2008



3.1.4 Basic Education over 3 years

Primary School

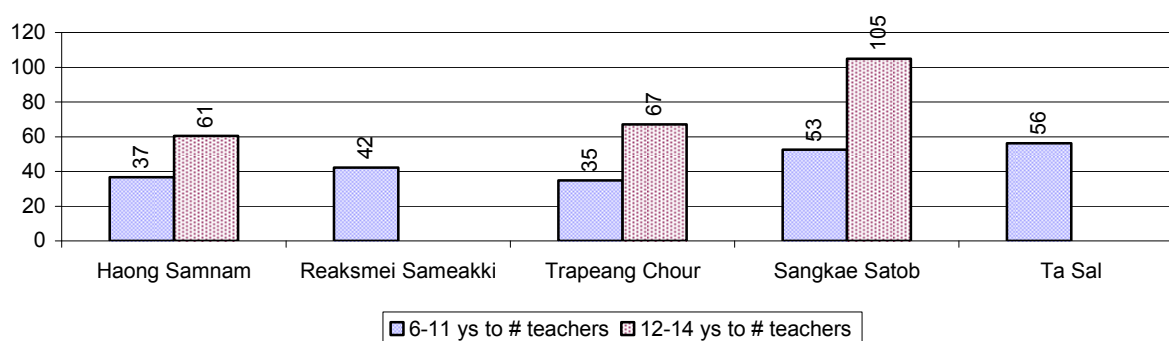
Description	2006	2007	2008
Number of primary schools	20 school(s)	27 school(s)	28 school(s)
Number of primary school rooms	149 room(s)	150 room(s)	150 room(s)
Number of primary classes	140 class(es)	161 class(es)	164 class(es)
Number of primary teachers	124 person(s)	109 person(s)	103 person(s)
Ratio of children 6-11 yrs to school	197	161	156
Ratio of children 6-11 yrs to school room	26	29	29
Ratio of children 6-11 yrs to class	28	27	27
Ratio of children 6-11 yrs to teacher	32	40	43

Note: According to education norm, children 6-11 yrs should attend primary school, while 12-14 yrs should be in lower secondary school, but in reality this varies.

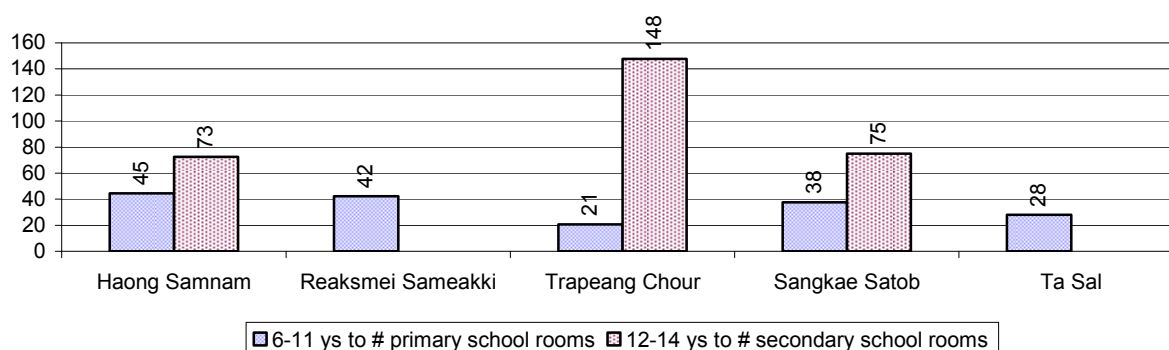
Lower Secondary School

Description	2006	2007	2008
Number of lower secondary schools	1 school(s)	2 school(s)	3 school(s)
Number of lower secondary school rooms	7 room(s)	12 room(s)	17 room(s)
Number of lower secondary classes	7 class(es)	11 class(es)	13 class(es)
Number of lower secondary teachers	19 person(s)	30 person(s)	22 person(s)
Ratio children 12-14 yrs to school	2,032	1,121	734
Ratio of children 12-14 yrs to school room	290	187	130
Ratio of children 12-14 yrs to class	290	204	169
Ratio of children 12-14 yrs to teacher	107	75	100

3.1.5 Ratio of 6-11 year old and 12-14 year old Children to number of Teachers, by Commune, in 2008



3.1.6 Ratio of 6-11 year old and 12-14 year old Children to number of School Rooms, by Commune, in 2008



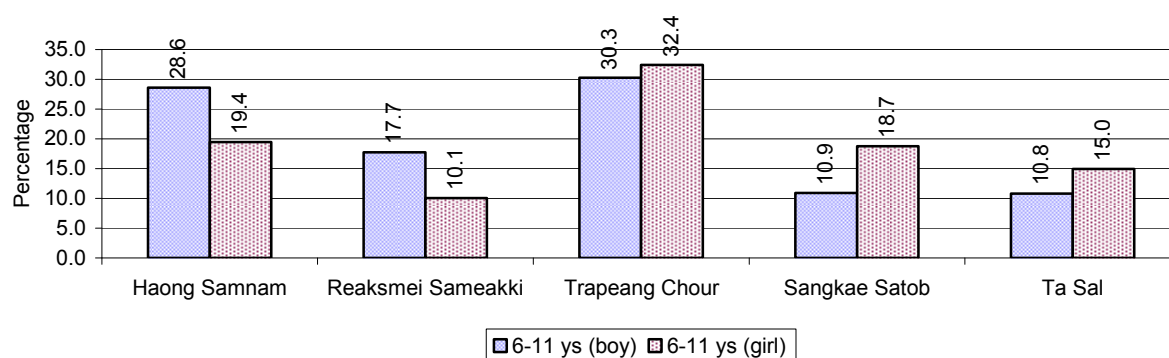
3.1.7 Enrolment status at Primary Level over 3 years

Description	2006 %	2007 %	2008	
			%	Number
Total children aged 6-11 years old	15%	15%	16%	4,381 person(s)
Total children aged 6-11 who are in school	84%	71%	79%	3,471 person(s)
Total children aged 6-11 who are not in school	16%	29%	21%	910 person(s)
Total girls aged 6-11 years old	15%	15%	16%	2,193 person(s)
Total girls aged 6-11 who are in school	82%	71%	79%	1,726 person(s)
Total girls aged 6-11 who are not in school	18%	29%	21%	467 person(s)
Total boys aged 6-11 years old	15%	16%	16%	2,188 person(s)
Total boys aged 6-11 who are in school	86%	71%	80%	1,745 person(s)
Total boys aged 6-11 who are not in school	14%	29%	20%	443 person(s)

Note 1: Percentage is calculated on the basis of the total number of children within 6-11 year age group for the first 3 rows and for the total girls and the total boys aged 6-11 yrs.

Note 2: Number of girls aged 6-11 who are in & not in school is calculated against the total number of girls aged 6-11 yrs. Number boys, 6-11 yrs who are in & not in school are calculated against the total number of boys aged 6-11 yrs.

3.1.8 Percentage of 6-11 year old Children not in School, by Commune, in 2008



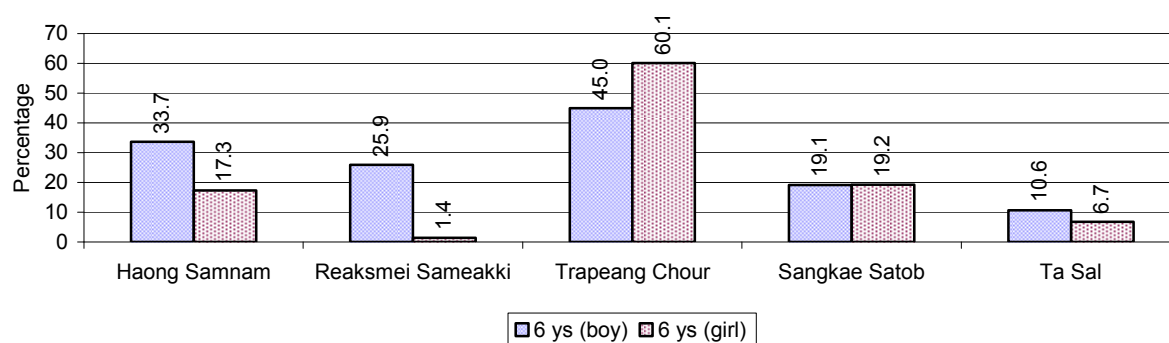
Note: calculated on the basis of the total number of children within 6-11 year age group in the commune.

3.1.9 Enrolment of 6 year old Children over 3 years

Description	2006 %	2007 %	2008	
			%	Number
Total % and number of children aged 6 years old	5%	5%	5%	1,461 person(s)
Total % of children aged 6 years old in school	82%	64%	70%	1,030 person(s)
Total % of children aged 6 years old not in school	18%	36%	30%	431 person(s)

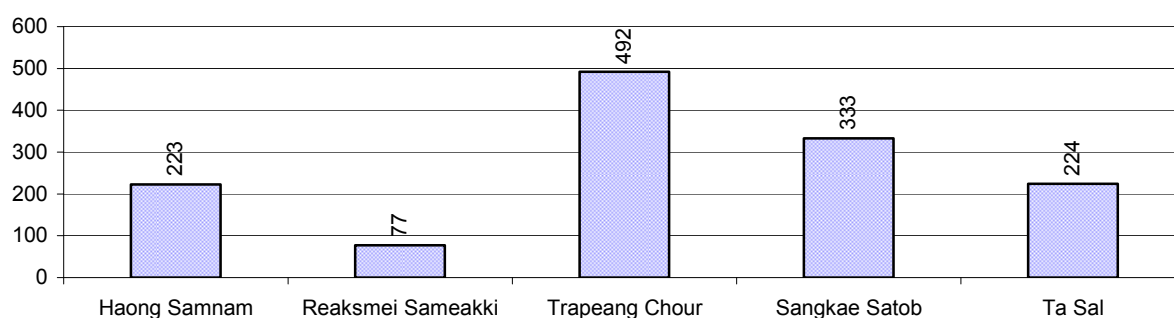
Note: First row calculated as a percentage of total population. Second and third row calculated as a percentage of the total number of 6 year olds.

3.1.10 Percentage of 6 year old Children not in School, by Commune, in 2008



Note: Calculated as a percentage of total 6 year old population

3.1.11 Number of 5 year old Children in each Commune in 2008

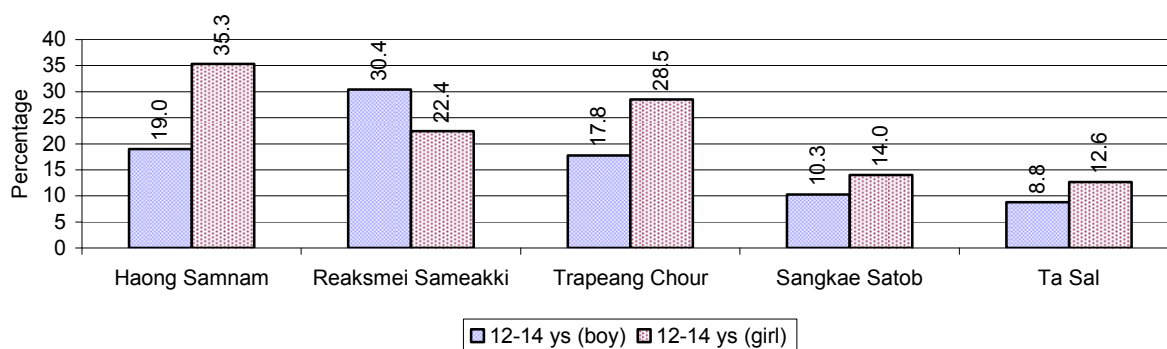


3.1.12 Enrolment at Lower Secondary Level over 3 years

Description	2006 %	2007 %	2008	
			%	Number
Total children aged 12-14 years old	8%	8%	8%	2,202 person(s)
Children aged 12-14 years old in school	87%	75%	80%	1,772 person(s)
Children aged 12-14 years old not in school	13%	25%	20%	430 person(s)
Total girls aged 12-14 years old	8%	8%	8%	1,131 person(s)
Girls aged 12-14 years old in school	89%	75%	77%	870 person(s)
Girls aged 12-14 years old not in school	11%	25%	23%	261 person(s)
Total boys aged 12-14 years old	8%	8%	8%	1,071 person(s)
Boys aged 12-14 years old in school	85%	75%	84%	902 person(s)
Boys aged 12-14 years old not in school	15%	25%	16%	169 person(s)

Note: Percentage is calculated on the basis of number of the total number of children within 12-14 yrs group, except for the first row of each section which is calculated on the basis of the total population.

3.1.13 Percentage of 12-14 year olds not in School, by Commune, in 2008



Note: Calculated as a percentage of the total 12-14 year old population in each commune

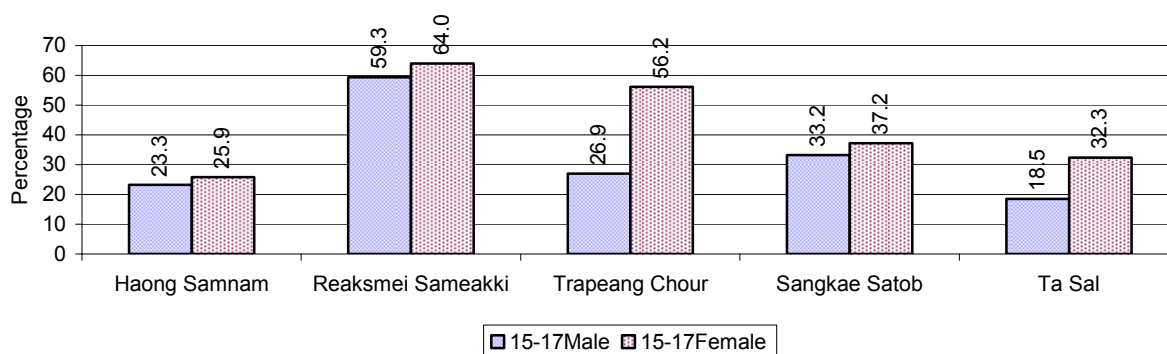
3.1.14 Upper Secondary Schools over 3 years

Description	2006	2007	2008
Number of upper secondary schools	0 school(s)	0 school(s)	1 school(s)
Number of upper secondary school rooms	0 room(s)	0 room(s)	2 room(s)
Number of upper secondary classes	0 class(es)	0 class(es)	2 class(es)
Number of upper secondary teachers	0 person(s)	4 person(s)	1 person(s)
Ratio of 15-17 yr olds to number of school	N/A	N/A	2,038
Ratio of 15-17 yr olds to number of school room	N/A	N/A	1,019
Ratio of 15-17 yr olds to number of classes	N/A	N/A	1,019
Ratio of 15-17 yr olds to number of teacher	N/A	492	2,038

3.1.15 Enrolment of 15-17 year old teenagers over 3 years

Description	2006	2007	2008
Number of teenage, 15-17 years old	1,653 person(s)	1,967 person(s)	2,038 person(s)
Number of teenage, 15-17 years old, who are not studying	549 person(s)	705 person(s)	780 person(s)
Percentage of teenage, 15-17 years old not studying	33%	36%	38%

3.1.16 Percentage of 15-17 year old Teenagers not at School, by Commune, in 2008



3.1.17 Literacy Classes as of 2008

Literacy classes	Organized by:		Other Program(s)	Total
	PDoEYS	NGOs		
Number of On-going literacy classes	0 class(es)	0 class(es)	0 class(es)	0 class(es)
Number of literacy students in on-going classes	0 person(s)	0 person(s)	0 person(s)	0 person(s)
Completed literacy class(es)	0 classes	0 classes	0 classes	0 classes
Number of literacy students that have completed literacy classes	0 person(s)	0 person(s)	0 person(s)	0 person(s)
Number of students that passed	0 person(s)	0 person(s)	0 person(s)	0 person(s)

3.1.18 Number of on-going and completed Literacy Classes, by Commune, in 2008

There were no classes in this District in 2008

3.1.19 Students of on-going & completed Literacy Classes, by Commune, in 2008

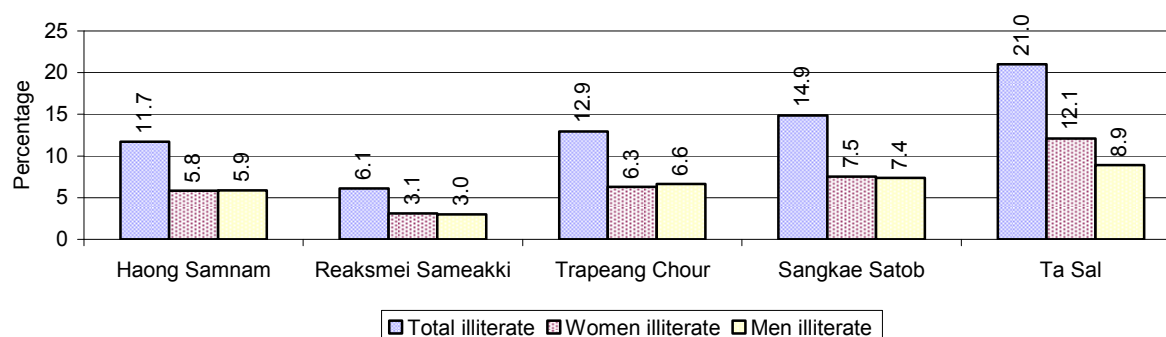
There were no students who had taken or were taking literacy classes in this District in 2008

3.1.20 Percentage of illiterate People between 15-60, over 3 years

Illiteracy Status	2006 %	2007 %	2008	
			%	Number
Illiterate people, 15-60 years old	23%	10%	14%	1,950 person(s)
Illiterate females, 15-60 years old	13%	6%	7%	1,010 person(s)
Illiterate people, 15-17 years old	9%	4%	5%	112 person(s)
Illiterate females, 15-17 years old	3%	2%	3%	54 person(s)
Illiterate people, 18-24 years old	14%	5%	7%	218 person(s)
Illiterate females, 18-24 years old	8%	3%	3%	113 person(s)
Illiterate people, 25-60 years old	30%	14%	19%	1,620 person(s)
Illiterate females, 25-60 years old	17%	7%	10%	843 person(s)

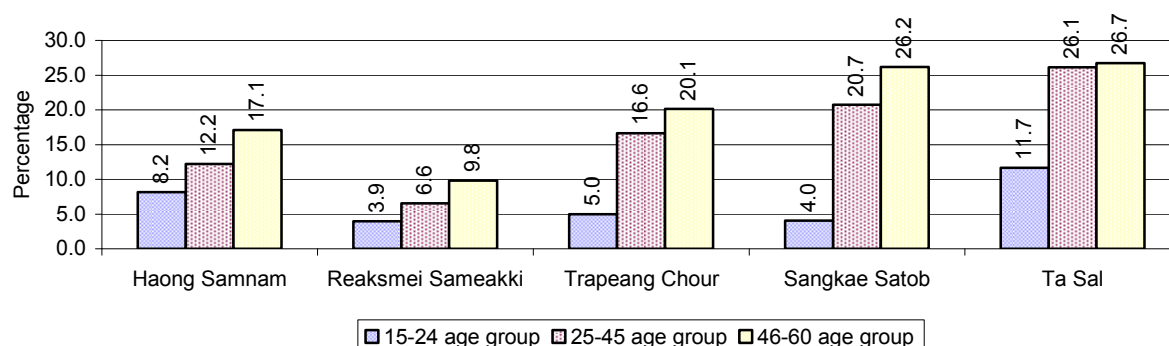
Note: Percentage is calculated on the basis of number of people in age each group.

3.1.21 Percentage illiterate People among 15-60 yrs old, by Commune, in 2008



Note: Percentages are calculated on the basis of number of people in that age group.

3.1.22 Percentage illiterate People for 15-24 yrs, 25-45 yrs and 46-60 yrs, by Commune, in 2008



Note: Percentage of illiterate people in each age group is calculated on the basis of number of people in that age group.

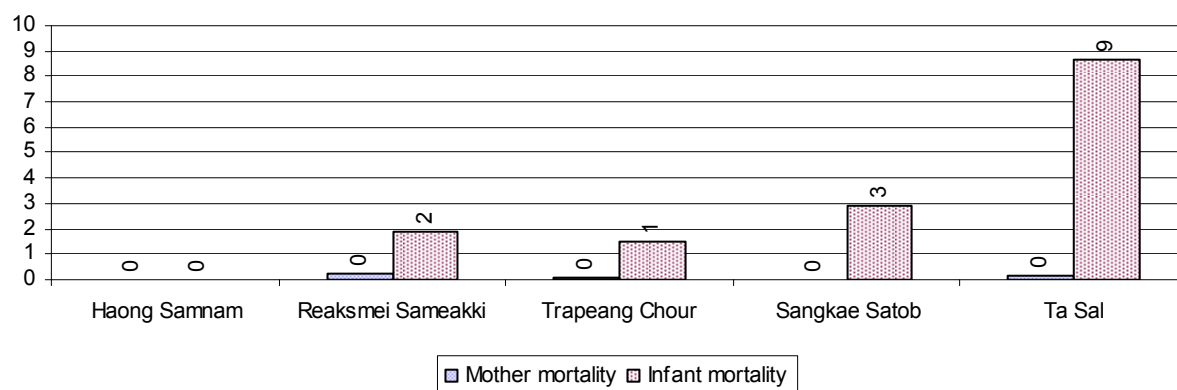
3.2 Health

3.2.1 Health Situation of Women and Children, over 3 years

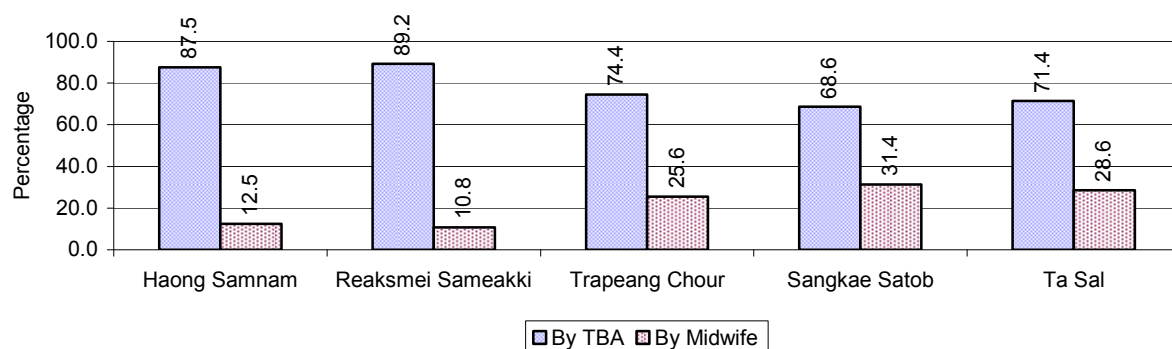
Description	2006	2007	2008
Number families with a birth during the year	737 families	691 families	708 families
Number of women who had their baby delivered by a TBA	557 person(s)	583 person(s)	540 person(s)
Percentage of women who had their baby delivered by a TBA	76 %	84 %	76 %
Number of women who had their baby delivered by a midwife	180 person(s)	108 person(s)	168 person(s)
Percentage of women had their baby delivered by a midwife	24 %	16 %	24 %
Number of mothers who died within 1 month of giving birth	9 person(s)	1 person(s)	3 person(s)
Mothers who died within 1 month of giving birth per 100,000 families having a delivery	1,221	145	424
Number of infants born during the year	737 person(s)	695 person(s)	709 person(s)
Number of Infants who died within 1 month	31 person(s)	10 person(s)	16 person(s)
Infants mortality within 1 month per 1,000 births	42	14	23
Number of children who died below the age of 5.	31 person(s)	22 person(s)	8 person(s)
Number of infants, aged 9-12 months, born during the year	469 person(s)	489 person(s)	542 person(s)
Nr. infants, aged 9-12 months, not receiving full immunization	7 person(s)	12 person(s)	12 person(s)
% of 9-12 months infants, not receiving full immunization	1 %	2 %	2 %

Note: TBA = Traditional Birth Attendant

3.2.2 Mothers dying within 0 days to 1 month of giving Birth and Infants dying within 1 month in 2008, by Commune

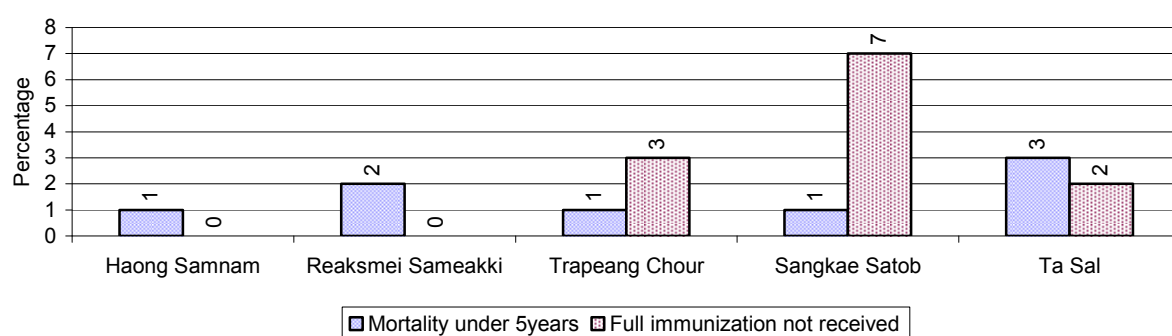


3.2.3 Percentage of Women delivering with a TBA or Midwife, by Commune



Note: Calculated as a percentage of total deliveries

3.2.4 Percentage of Children dying below 5 & of 9-12 months not receiving full Immunization, by Commune, in 2008



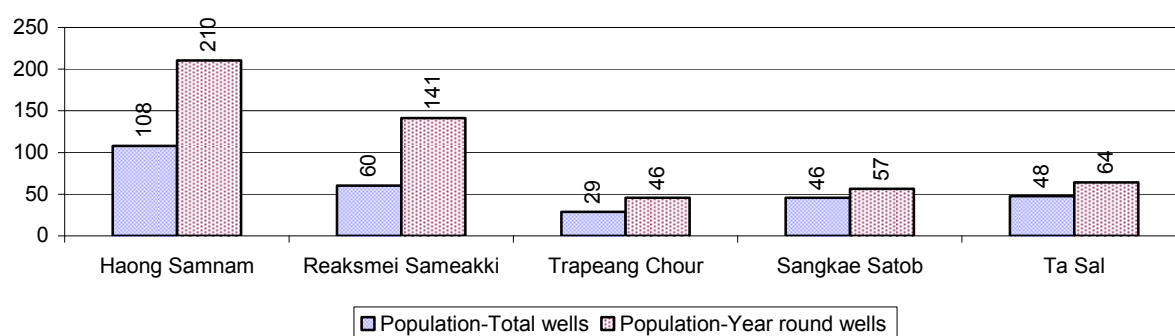
Note: Mortality rate calculated as a percentage of the total 5 year old population. Lack of immunization received calculated as a percentage of the total number 9-12 months olds there are

3.3 Water and Sanitation

3.3.1 Number of different types of Wells over 3 years

Type of wells	Number of wells by year		
	2006	2007	2008
<i>Total number of pumped or mixed wells</i>	237	268	351
Year-round usable pumped or mixed wells	196	198	237
Dry season unusable pump or mixed wells	41	70	114
Pump or mixed wells needing repair/rehabilitation	37	50	68
<i>Total number of ring wells</i>	169	255	293
Year-round usable ring wells	109	159	192
Dry season unusable ring wells	60	96	101
Ring wells needing repair/rehabilitation	39	69	77
<i>Total number of unprotected dug wells</i>	23	53	81
Year-round usable unprotected dug wells	12	27	37
Dry season unusable unprotected dug wells	11	26	44

3.3.2 Ratio of People to Wells, by Commune, in 2008

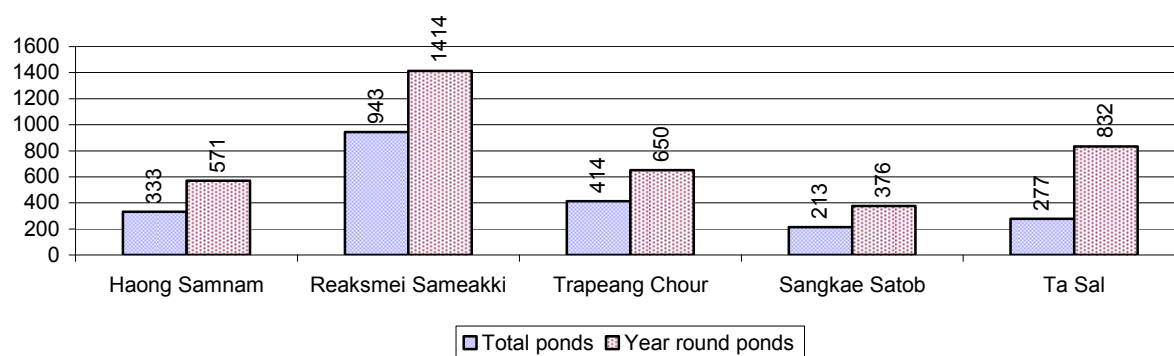


Note: Year-round wells excluding unprotected wells

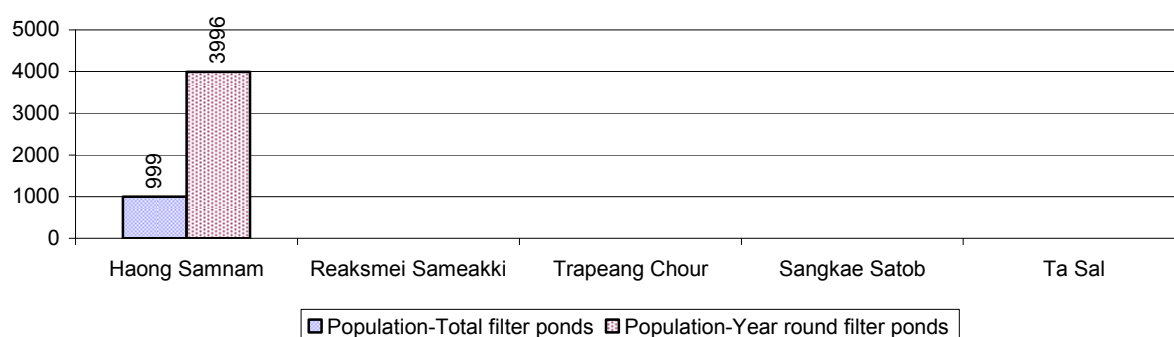
3.3.3 Potable Ponds over 3 years

Type of Pond	2006	2007	2008
<i>Total number of normal-type ponds</i>	56 pond	80 pond	85 pond
Year-round usable normal-type ponds	22 pond	35 pond	46 pond
Dry season unusable normal-type ponds	34 pond	45 pond	39 pond
Normal-type ponds needing repair/rehabilitation	23 pond	35 pond	37 pond
<i>Total number of filter ponds</i>	7 pond	0 pond	4 pond
Year-round usable filter ponds	4 pond	0 pond	1 pond
Filter ponds, dry season unusable	3 pond	0 pond	3 pond
Filter ponds needing repair/rehabilitate	9 pond	0 pond	2 pond

3.3.4 Ratio of People to normal Ponds, by Commune in 2008



3.3.5 Ratio of People to Filter Ponds, by Commune, in 2008



3.3.6 Source of potable Water for Households, over 3 years

Water sources	2006	2007	2008	
	%	%	%	Number
Families using water from purification system	0%	0 %	0 %	0 families
Families using water from pump, mixed wells	52%	54 %	53 %	3,193 families
Families using water from ring wells and open dug wells	14%	15 %	22 %	1,347 families
Families using water from pond	7%	8 %	8 %	490 families
Families using water from rain water storage	3%	1 %	1 %	48 families
Families using water from rivers, lakes, natural ponds and reservoirs	24%	24 %	15 %	922 families

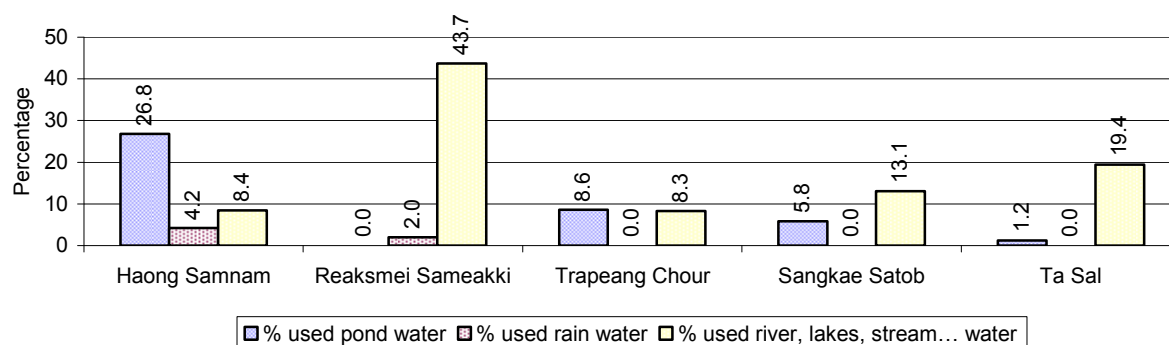
Note: Calculated as a percentage of the total number of families.

3.3.7 Percentage Families using different Water Sources, by Commune, in 2008

There were no Families using different Water Sources in this District in 2008

Note: Calculated as a percentage of the total number of families in each commune

3.3.8 Percentage Families using Water from Rain Water Storage, Ponds and natural Sources (rivers/lakes/natural ponds/reservoirs), by Commune, 2008



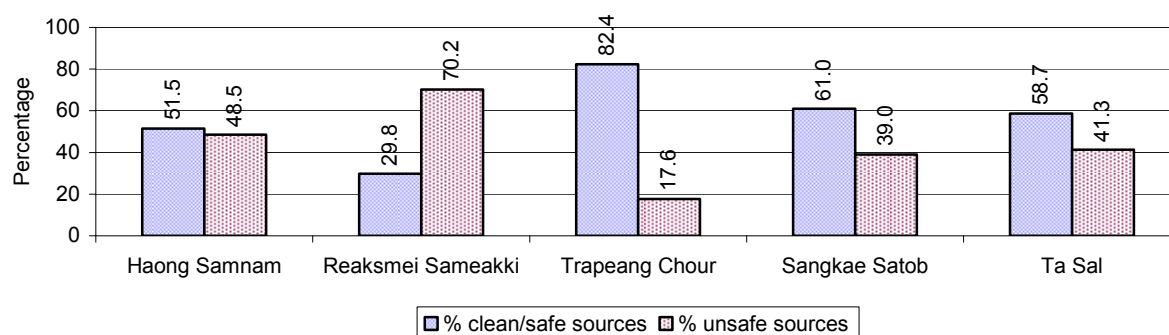
Note: Calculated as a percentage of the total number of families in each commune

3.3.9 Drinking Water Sources in the dry Season over 3 years

Percentage Families that get drinking water from:	2006	2007	2008	
	%	%	%	Number
from clean/safe sources	57 %	61 %	63 %	3,792 families
from unsafe sources	43 %	39 %	37 %	2,208 families

Note: Calculated as a percentage of the total number of families.

3.3.10 Percentage Families using safe and unsafe Water Sources in the dry Season, by Commune, in 2008



Note: Calculated as a percentage of the total number of families in each commune.

3.3.11 Drinking Water Purification by Households, over 3 years

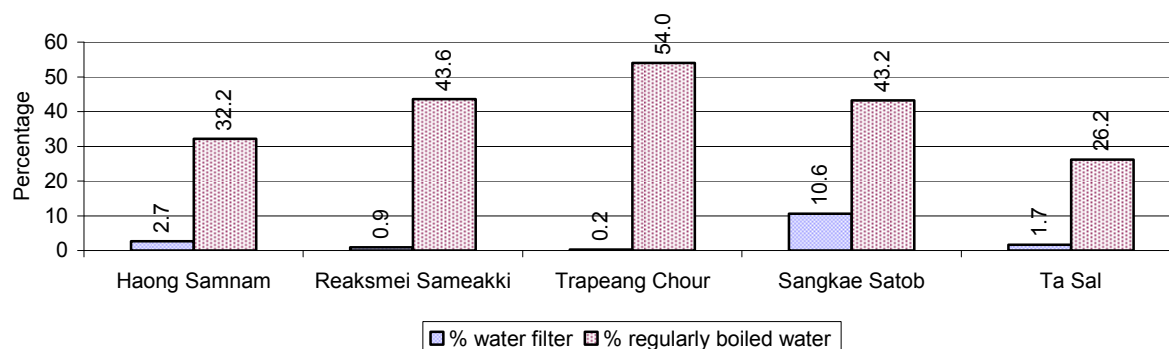
This table shows the different ways families make water safe for drinking.

Families, who:	2006	2007	2008	
	%	%	%	Number
Filter water for drinking	6%	3%	3 %	189 families
Boil water for drinking	44%	42%	42 %	2,534 families

Note: Calculated as a percentage of the total number of families

3.3.12 Percentage Families filtering Water or regularly boiling Water, by Commune, in 2008

This graph shows the different ways families make drinking water safe.



Note: Calculated on as a percentage of the total number of families in each commune.

3.3.13 Families' access to Water, over 3 years

Families access to water	2006	2007	2008	
	%	%	%	Number
Families with water at home or in less then 150m	24%	20%	38 %	2,294 families
Families with water 150m or more away from home	18%	19%	27 %	1,609 families

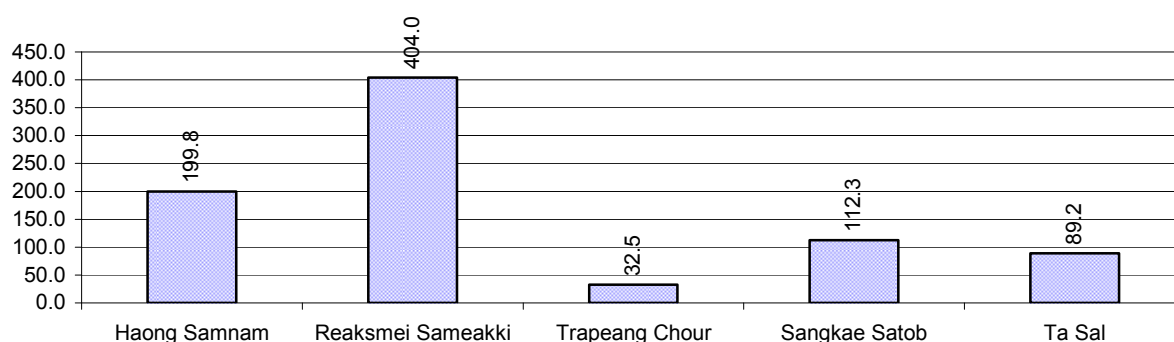
Note: Calculated as a percentage of the total number of families

3.3.14 Ratio of people to Latrines over 3 years

Description	2006	2007	2008	
	Ratio	Ratio	Ratio	Number
Ratio of people to latrines	116.9	89.9	65.1	420.0

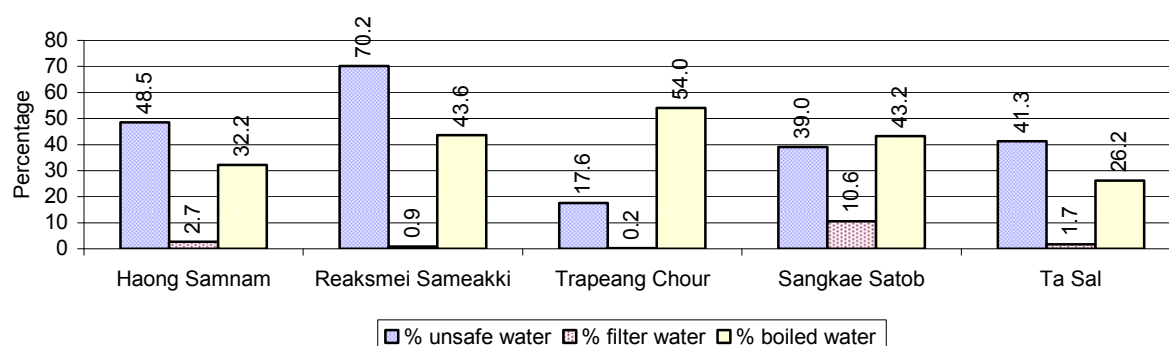
Note: Ratio calculated by dividing the number of houses with latrines by the total population

3.3.15 Ratio of People to Latrines, by Commune, in 2008



Note: Ratio calculated by dividing the number of houses with latrines by the total population in a Commune.

3.3.16 Percentage of Families drinking boiled, filtered or unsafe Water, by Commune, in 2008



Note: Calculated as a percentage of the total number of families in each commune.

3.4 Vulnerable groups

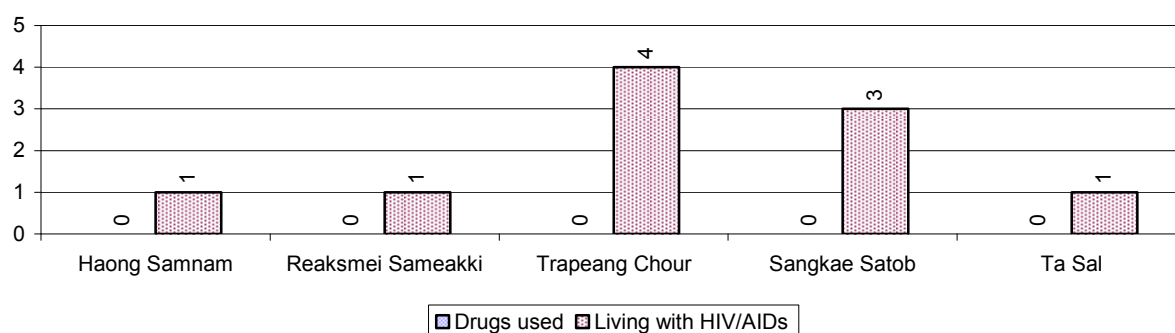
3.4.1 Vulnerable Groups in need of special Protection over 3 years

Vulnerable groups	2006	2007	2008
Victims of sexual abuse	2 person(s)	0 person(s)	0 person(s)
Victims of human trafficking	0 person(s)	0 person(s)	0 person(s)
Families with family member(s) using drugs	2 families	0 families	0 families
Families with family member(s) living with HIV/AIDS	15 families	12 families	10 families
Children under 18 yrs old whose parent died of AIDS	27 person(s)	28 person(s)	26 person(s)
Orphaned/abandoned children under 18 yrs old (all cases)	119 person(s)	168 person(s)	139 person(s)
Elderly persons without guardian	64 person(s)	97 person(s)	65 person(s)
Disabled people able to earn an income	17 person(s)	18 person(s)	25 person(s)
Disabled people unable to earn an income	24 person(s)	56 person(s)	32 person(s)
Disabled people under 18 yrs old	8 person(s)	19 person(s)	20 person(s)
Victims of natural disasters	401 families	106 families	0 families
Victims of land mines and unexploded weapons	13 person(s)	2 person(s)	0 person(s)

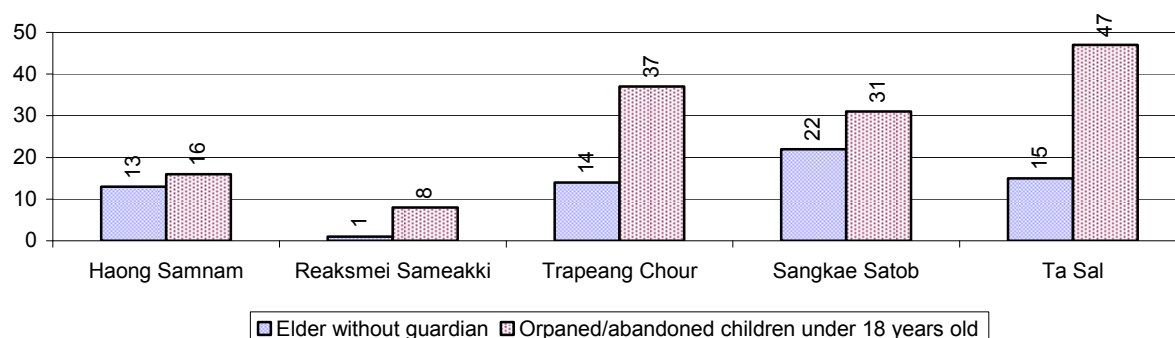
3.4.2 Registered Victims of sexual Abuse or Trafficking, by Commune, for 2008

There were no sexual abuse or trafficking in this District in 2008

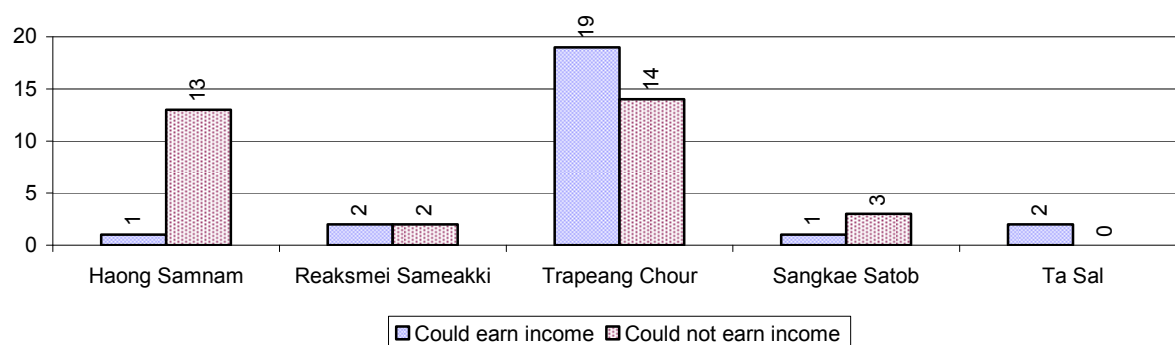
3.4.3 Registered Families with Member(s) using Drugs or living with HIV/AIDS, by Commune, for 2008



3.4.4 Elderly Persons without a Guardian and orphaned/abandoned Children under 18 years old, by Commune, for 2008



3.4.5 Number of disabled People who could or could not earn an Income, by Commune, for 2008



3.4.6 Number of Families who suffered from natural Disasters, and number of Victims of Land Mines and unexploded Weapons, by Commune, in 2008 in this District in 2008

3.5 Migration

3.5.1 Migration over 3 years

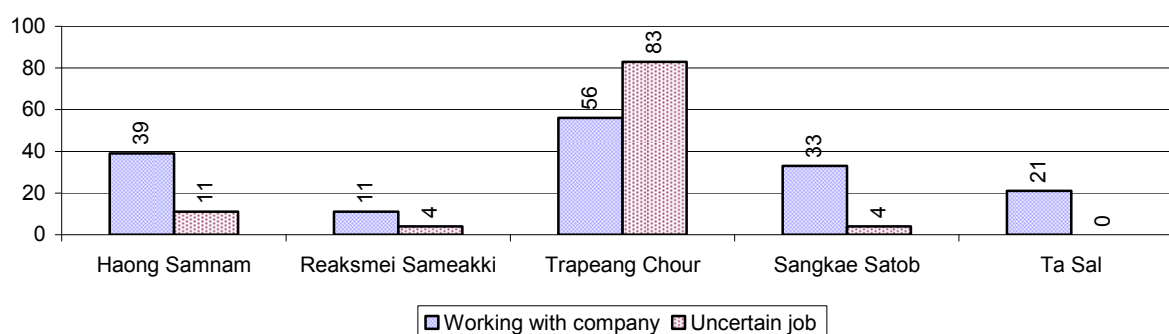
Description	2006	2007	2008
Number of families permanently in-migrated	families	42 families	184 families
Total number of people	390 person(s)	280 person(s)	685 person(s)
Total number of female	205 person(s)	142 person(s)	350 person(s)
Number of families permanently out-migrated	37 families	37 families	51 families
Total number of people	139 person(s)	143 person(s)	134 person(s)
Total number of female	71 person(s)	77 person(s)	70 person(s)
Number of families staying temporarily	54 families	56 families	72 families
Total number of people	176 person(s)	214 person(s)	242 person(s)
Total number of female	93 person(s)	123 person(s)	119 person(s)

3.5.2 Job Migration

Description	2006	2007	2008	
Number of people migrated to work with company/factory	1%	1%	1%	160 persons
Number of people migrated to work, but have uncertain jobs	0%	1%	1%	102 persons

Note: Calculated as a percentage of the total population of 18-60 year olds

3.5.3 Number of People working outside their home Villages in a Company/Factory or with an uncertain Job in 2008

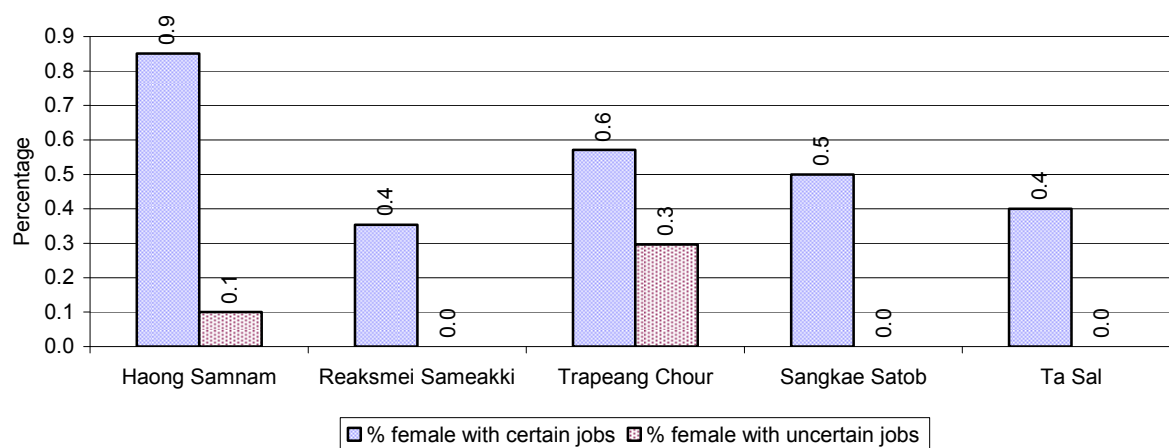


3.5.4 Female migration over 3 years

Description	2006 %	2007 %	2008	
			%	Number
Total number of migrants	0.5%	1.0%	1.0%	262 person(s)
Number of female migrants	0.4%	0.6%	0.7%	179 person(s)
Total number of migrants, who go to work with company/factory (with certain jobs)	0.4%	0.4%	0.6%	160 person(s)
Number of female migrants with certain jobs	0.4%	0.4%	0.5%	148 person(s)
Total number of migrants with uncertain jobs	0.1%	0.5%	0.4%	102 person(s)
Number of female migrants with uncertain jobs	0.0%	0.2%	0.1%	31 person(s)

Note: Calculated as a percentage of the total population

3.5.5 Percentage female Migrants with certain and uncertain Jobs, by Commune, in 2008



Note: Calculated as a percentage of the total population of the commune

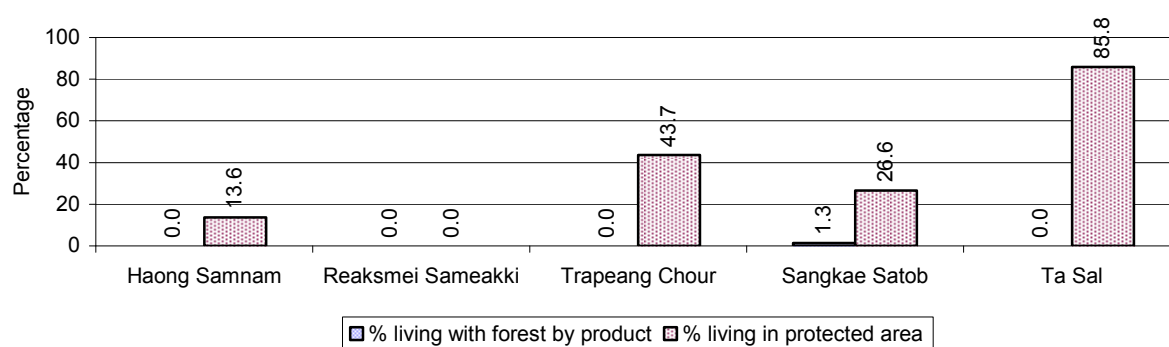
4 Natural Resources and Environment (NRE)

4.1 Families involved with NRE issues over 3 years

Description	2006 %	2007 %	2008	
			%	Number
Families living with forest by products	0 %	0 %	0 %	17 families
Families living in a protected area	13 %	12 %	39 %	2,344 families
Houses with access to garbage collection service	0 %	0 %	0 %	0 families
Families affected by environmental pollution	0 %	0 %	0 %	0 families
Families using chemical fertilizer	1 %	0 %	0 %	17 families
Families using chemical pesticide	0 %	0 %	0 %	12 families

Note: Calculated as a percentage of the total number of families

4.2 Percentage of Families involved with Natural Resource issues, by Commune, for 2008



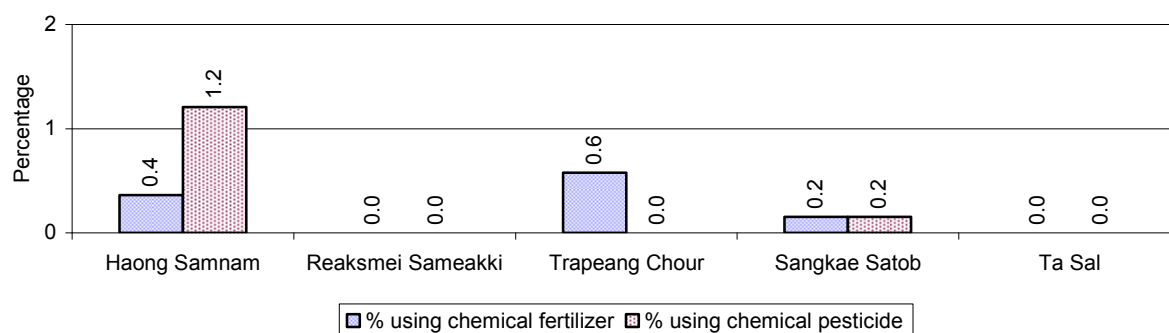
Note: Calculated as a percentage of the number of families in each commune

4.3 Percentage Houses with access to Garbage collection and Families affected by environmental Pollution, by Commune, for 2008

There were no houses with access to garbage collection and there were no families affected by environmental pollution in this District in 2008

Note: Garbage collection is calculated as a percentage of the total number of houses in each commune and families affected by environmental pollution is calculated as a percentage of the total number of families in each commune.

4.4 Percentage Families using chemical Fertilizer and chemical Pesticides, by Commune, for 2008



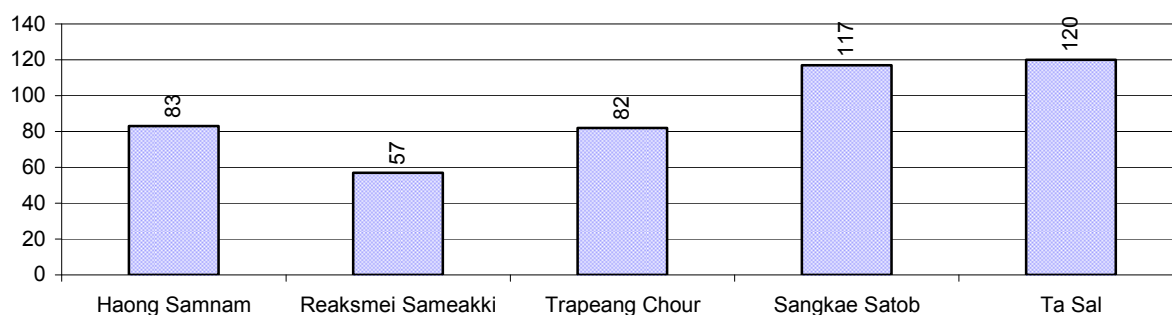
Note: Calculated as a percentage of the total number of families in each commune

5 Administration and Security

5.1 Birth Registration across 3 years

Description	2006	2007	2008
Number of infants to be registered	706 person(s)	685 person(s)	693 person(s)
Number of unregistered infants the year	310 person(s)	442 person(s)	459 person(s)
Percentage of infants unregistered	44 %	65 %	66 %

5.2 Number of unregistered Infants born in 2008, by Commune

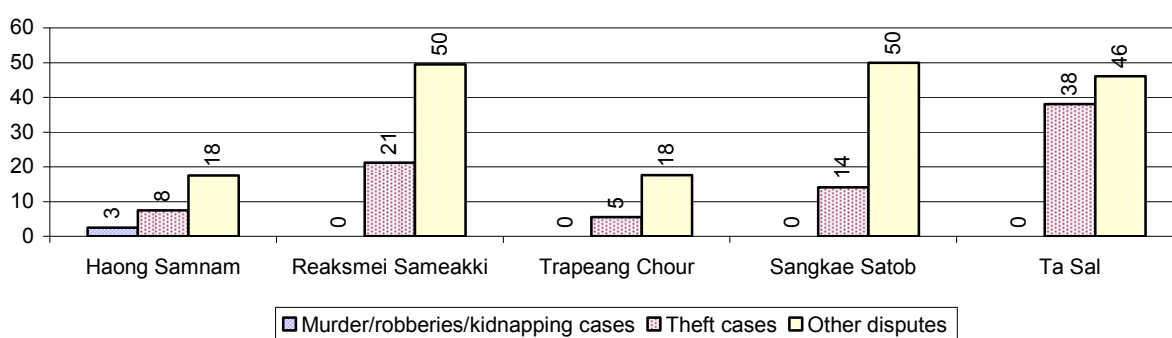


5.3 Registered criminal Cases over 3 years

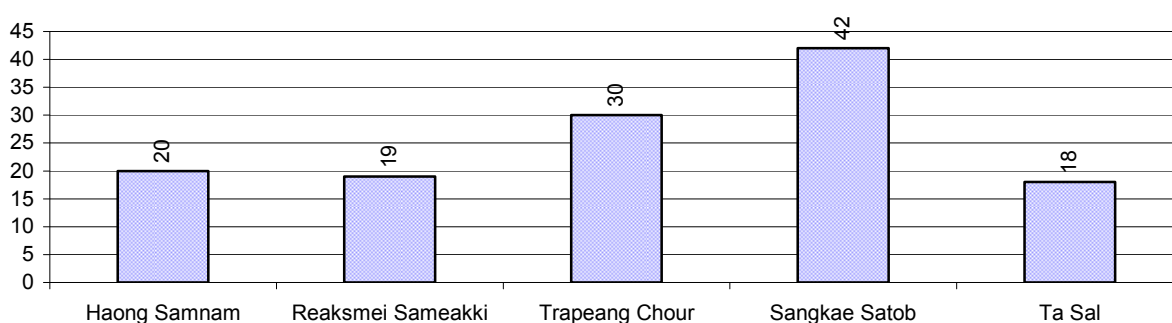
Description	2006	2007	2008
Murders, robberies and kidnapping cases	3 case(s)	4 case(s)	1 case(s)
Theft cases	91 case(s)	42 case(s)	42 case(s)
land dispute cases	183 case(s)	75 case(s)	129 case(s)
Other disputes cases	109 case(s)	54 case(s)	92 case(s)

Note: this reflects only registered criminal cases

5.4 Registered criminal Cases per 10,000 people, by Commune, for 2008



5.5 Number of registered Land Disputes, by Commune, in 2008

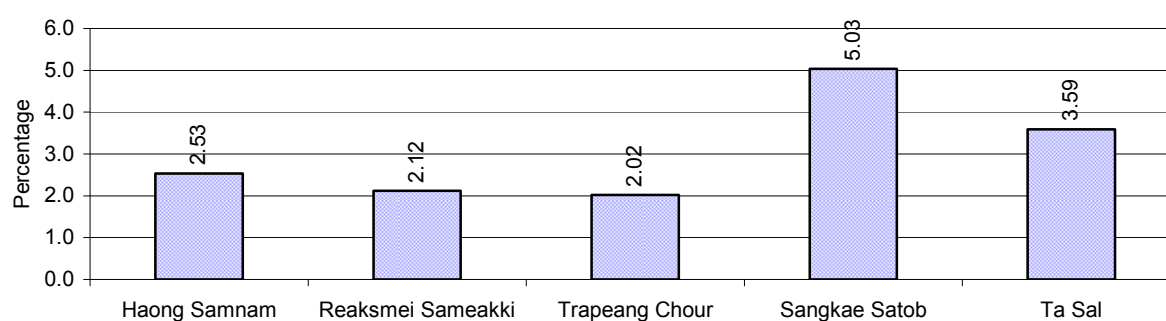


6 Gender

6.1 Registered Domestic Violence over 3 years

Description		2006	2007	2008
Families experiencing domestic violence		280 families	204 families	183 families(s)
% families experiencing domestic violence		5 %	4 %	3 %
Domestic violence cases reported by village chiefs		257 case(s)	159 case(s)	164 case(s)
Type	Physical violence	136 case(s)	43 case(s)	66 case(s)
	Sexual violence	0 case(s)	19 case(s)	4 case(s)
	Mental violence	52 case(s)	51 case(s)	51 case(s)
	Household economic violence	69 case(s)	46 case(s)	43 case(s)
Number of administrative decisions on domestic violence		77 case(s)	95 case(s)	98 case(s)
% of administrative decisions on domestic violence		30 %	60 %	60 %

6.2 Percentage of registered cases of Families experiencing domestic Violence, by Commune, in 2008



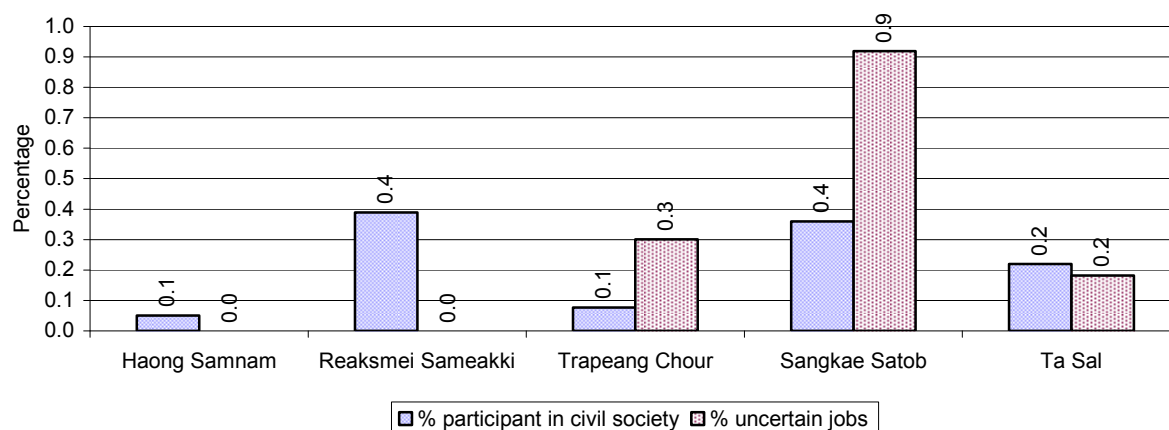
Note: Calculated as a percentage of the total number of families in each commune

6.3 Women's involvement over 3 years

Description	2006 %	2007 %	2008	
			%	Number
People participating in civil society	1%	0%	0%	132 person(s)
Women participating in civil society	0%	0%	0%	54 person(s)
People, 18-60 yrs, with uncertain/irregular jobs	4%	3%	1%	79 person(s)
Women, 18-60 yrs, with uncertain/irregular jobs	2%	1%	0%	41 person(s)

Note: Participation can be in NGOs, CBOs, credit groups, women's unions, parties and other civil society organizations. The first section is calculated as a percentage of the total population. The second section is calculated as a percentage of the total 18-60 year old population.

6.4 Percentage of Female Participants in Civil Society and of 18-60 year women with uncertain Jobs, by Commune, in 2008



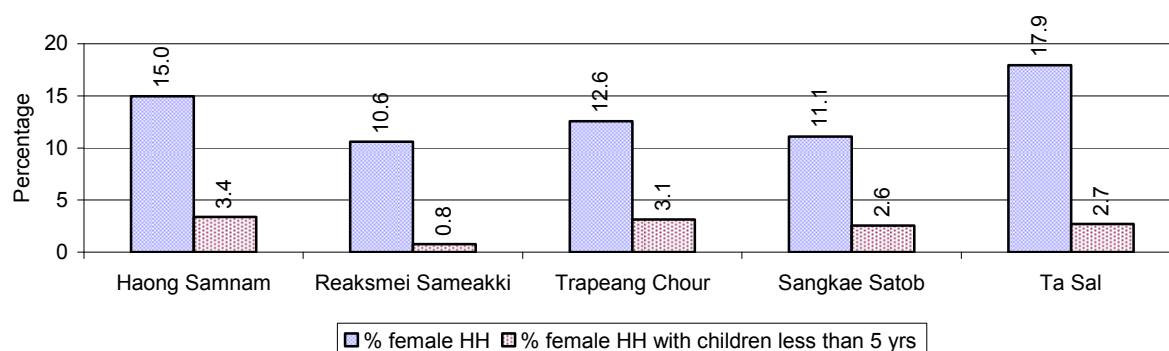
Note: Percentage of female participants in civil society is calculated as a percentage of the total population per commune. The percentage of 18-60 years old women with uncertain jobs is calculated as a percentage of the total 18-60 year old population per commune.

6.5 Female-headed Households over 3 years

Families with:	2006	2007	2008	
	%	%	%	Number
Households in which a woman is the family head	14%	13%	13%	803 families
Households in which a woman is the family head with children of less than 5 yrs	4%	2%	3%	162 families

Note: Calculated as a percentage of the total number of families

6.6 Percentage female-headed Households and with Children of less than 5 years old, by Commune, in 2008



Note: Calculated as a percentage of the total number of families in each commune
HH: Headed Household

7 Indigenous People in the District

7.1 Ethnic Minorities in the District over 3 years

Race of indigenous	2006		2007		2008	
	# families	# population	# families	# population	# families	# population
Phnong	0 families	0 person(s)	0 families	0 person(s)	0 families	0 person(s)
Kouy	376 families	2,158 person(s)	212 families	1,146 person(s)	273 families	1,383 person(s)
Stieng	0 families	0 person(s)	0 families	0 person(s)	0 families	0 person(s)
Mil	0 families	0 person(s)	0 families	0 person(s)	0 families	0 person(s)
Kroal	0 families	0 person(s)	0 families	0 person(s)	0 families	0 person(s)
Thmorn	0 families	0 person(s)	0 families	0 person(s)	0 families	0 person(s)
Khaonh	0 families	0 person(s)	0 families	0 person(s)	0 families	0 person(s)
Tompuonn	0 families	0 person(s)	0 families	0 person(s)	0 families	0 person(s)
Charay	0 families	0 person(s)	0 families	0 person(s)	0 families	0 person(s)
Kroeung	0 families	0 person(s)	0 families	0 person(s)	0 families	0 person(s)
Kavet	0 families	0 person(s)	0 families	0 person(s)	0 families	0 person(s)
Saouch	0 families	0 person(s)	0 families	0 person(s)	0 families	0 person(s)
Lun	0 families	0 person(s)	0 families	0 person(s)	0 families	0 person(s)
Kachak	0 families	0 person(s)	0 families	0 person(s)	0 families	0 person(s)
Praov	0 families	0 person(s)	0 families	0 person(s)	0 families	0 person(s)
Others	0 families	0 person(s)	0 families	0 person(s)	0 families	0 person(s)
Total	376 families	2,158 person(s)	212 families	1,146 person(s)	273 families	1,383 person(s)

Note: "Others" refer to other ethnic groups which are not listed.

7.2 Other Minorities in the District over 3 years

Minority	2006		2007		2008	
	# families	# population	# families	# population	# families	# population
Khmer Islamic	3 families	19 person(s)	1 families	12 person(s)	7 families	39 person(s)
Vietnamese	0 families	0 person(s)	0 families	0 person(s)	1 families	6 person(s)
Laos	0 families	0 person(s)	0 families	0 person(s)	0 families	0 person(s)

Note: Number of indigenous and minority population are additional data, so some village may not recorded.

SECTION C: PLANS AND PROJECTS

8 Priorities and Plans

8.1 Priorities of Commune Councils for 2009 in the District by Sector

The District Priority Activity Matrix (DPAM) data are taken from the CDPD. The DPAM is used for the District Integration Workshop (DIW), to show what kind of projects the commune has proposed in their Commune Investment Plan (CIP) for 2009. Donors, departments and other agencies then consider which projects they want to support and which projects they are not interested in. This results in Temporary Agreements between the Commune Council and the Supporter (NGO, Department, private donor, etc), as shown in table 8.2

No.	Project Name	Haong Samnam	Reaksmei Sameakki	Trapeang Chour	Sangkae Satob	Ta Sal	Req.Project
		50401	50402	50403	50404	50405	Total
Economic							
1	Compost fertilizer training	3 training	1 training		5 training		3
2	Chemical and pesticide application training	3 training					1
3	Vegetable growing training	3 training		8 training	6 training		3
4	Fruit tree cultivation training			4 training	5 training	1 training	3
5	Mixed farming system training	3 training		6 training		2 training	3
6	Rice field demonstration	3 training			5 training	2 training	3
7	IPM training	3 training			2 training	1 training	3
8	Soil improvement techniques training					1 training	1
9	Agricultural machinery training	20 training					1
10	Natural rice cultivation practice					2 training	1
11	Agricultural land expansion	3 village			7 place		2
12	Rice cultivation technique training	3 training		5 training			2
13	Animal vaccination request	3 training	2 training	2 training	4500 Head	2 training	5
14	Village veterinary training	1 training		2 training	1 training	2 training	4
15	Animal raising training				6 training	3 training	2
16	Chicken raising training	3 training		4 training		3 training	3
17	Cow raising training	3 training		9 training			2
18	Agriculture association activation				6 time	17 training	2
19	Rice seed request	3000 Kg	2500 Kg		27800 Kg	8500 Kg	4
20	Livestock raising request	160 Head					1
21	Family fish pond construction	3 Pond			5 Pond	5 Pond	3
22	Fish raising training	3 training			5 training		2

District Data Book 2009: Development Plans and Projects

No.	Project Name	Haong Samnam	Reaksmei Sameakki	Trapeang Chour	Sangkae Satob	Ta Sal	Req.Project
		50401	50402	50403	50404	50405	Total
23	Fish fingerling request	3000 Head	1000 Head		8000 Head		3
24	Fish hatchery station construction				5 Reservoir		1
25	Fish raising day demonstration	2 time					1
26	Bridge repair/construction	53 m					1
27	Road maintenance committee				9 time		1
28	Earth road construction			11000 m			1
29	Laterite/natural gravel road construction	1200 m					1
30	Culvert construction				72 m		1
31	Bridger construction			40 m	1 place		2
32	Earth road repairing		2000 m			2000 m	2
33	Laterite/natural gravel road repairing	2000 m		21000 m	570 m	1000 m	4
34	Culvert repairing			70 m		2 place	2
35	Bridger repairing					1 place	1
36	Irrigation pond construction/rehabilitation				1 Pond		1
37	Canal construction			1500 m			1
38	Dam construction			250 m		2 place	2
39	Water gate construction			1 place			1
40	Pumping station construction				2 place		1
41	Spillway construction	1050 m				4 place	2
42	Reservoirs construction	1250 m					1
43	Canal repairing	1350 m	1000 m		150 m	3000 m	4
44	Dam repairing			150 m	1 place	4 place	3
45	Reservoirs repairing		2 place			2 place	2
46	Cash credit				92000000 Riels	6000000 Riels	2
47	Cow bank				7 Head		1
48	Development of natural tourism area	2 place					1
49	Water pump		1 set				1
Social							
1	Family planning	2 time	2 training	2 time		2 training	4
2	Antenatal care	1 time	3 training	4 time		1 training	4

District Data Book 2009: Development Plans and Projects

No.	Project Name	Haong Samnam	Reaksmei Sameakki	Trapeang Chour	Sangkae Satob	Ta Sal	Req.Project
		50401	50402	50403	50404	50405	Total
3	Reproductive health awareness education	1 time					1
4	Sexual disease treatment needs				2 time		1
5	HIV/AIDS awareness education	2 time	2 training	2 time		2 training	4
6	HIV/AIDS infected person assistance			12 time			1
7	HIV/AIDS days celebration					1 training	1
8	Vitamin A provision campaign	1 time				3 training	2
9	Children immunization provision	2 time		2 time		1 training	3
10	Children and women vaccination					6 time	1
11	Antenatal vaccination provision	2 time		2 time			2
12	Mobile health clinic provision				15 time	1 training	2
13	VHV training	1 training					1
14	Midwife strengthening/training			2 training			1
15	VHV strengthening			4 training	3 training	2 training	3
16	TBA training	1 training	1 training		2 training	1 training	4
17	Tuberculosis treatment accessibility	3 time	2 training				2
18	TB/leprosy patients searching	1 time					1
19	Mosquito nets distribution/treatment			2 time		2 training	2
20	Malaria awareness education	3 time	3 training	4 time		1 training	4
21	Mosquito larvae removal treatment			4 time			1
22	Dengue fever education programme	3 time	2 training				2
23	Breastfeeding awareness education	2 time					1
24	Maternal health care service activation/creation					2 training	1
25	Ferric tablet and Vitamin A distribution campaign				3 time		1
26	Pupils' health examination at school	3 time					1
27	Deworming of school children	3 time					1
28	Iodine salt project	4 time		4 time			2
29	Latrine construction			20 toilet		2 toilet	2
30	Sanitation education			4 time			1
31	Commune health center construction		1 building	1 place			2
32	Village health post construction	1 building					1
33	Water filter equipment supply			230			1

District Data Book 2009: Development Plans and Projects

No.	Project Name	Haong Samnam	Reaksmei Sameakki	Trapeang Chour	Sangkae Satob	Ta Sal	Req.Project
		50401	50402	50403	50404	50405	Total
				Container			
34	Giant water jar provision			50 Jar			1
35	Pump wells construction			10 well	2 well		2
36	Ring wells construction			5 well	18 well		2
37	Ponds construction	3 Pond		6 Pond			2
38	Pump wells repairing		1 well		8 well		2
39	Ring wells repairing		2 well				1
40	Safe water equipment maintaining/repairing training					1 training	1
41	Literacy class	9 class			3 class		2
42	Literacy teacher support	9 person			15 person	5 training	3
43	Literacy teacher training	1 training			1 training		2
44	Literacy class materials support	1 set					1
45	School building		1 building				1
46	Kindergarten school construction/repair			2 class			1
47	Kindergarten equipment provision			2 time			1
48	Motivating pupil's parents for school enrollment	2 time					1
49	Poor pupils enrollment support		2 time	23 time			2
50	School materials support to poor pupils				1 time		1
51	Scholarship provision to poor pupils			1 time			1
52	School dropped children data collection	4 time					1
53	Bicycle/motorcycle/radio repairing skill training	2 training					1
54	Non-formal class teaching/generating					2 training	1
55	Youth moral education					2 training	1
56	Food/materials support to disabled family		2 time				1
57	Khmer culture awareness education	2 time					1
58	Cultural center conservation established			5 place			1
59	Highland people culture study			2 time			1
60	Kring's language documentation			150 Head			1
NREM							
1	Environmental awareness and law education	2 time	1 training	3 time	4 time	2 training	5

District Data Book 2009: Development Plans and Projects

No.	Project Name	Haong Samnam	Reaksmei Sameakki	Trapeang Chour	Sangkae Satob	Ta Sal	Req.Project
		50401	50402	50403	50404	50405	Total
2	Fishery law education		1 training	3 time		2 training	4
3	Forestry law education	2 time				1 training	2
4	Wildlife protection law education		2 training	4 time		2 training	3
5	Firewood saving cooking stove		5 set				1
6	Organizing environment day		1 time		4 time	1 time	3
7	Establishment of NREM protection community					1 Forestry Community	1
8	Forestry protection poster setting up					1 board	1
9	Tree plantation project				500 Tree		1
10	Organizing tree planting day			3 time			1
11	Tree planting promotion/dissemination	200 Tree					1
12	Strengthening fishery community			1 Fishing Community	8 Team		2
13	Charcoal kilns control		2 time				1
14	Community forestry activities support	2 time		4 time	2 Forestry Community		3
Administration and Security							
1	Civil registration encouragement	3 time	1 training			4 training	3
2	CC capacity strengthening		1 training			1 training	2
3	Administration and commune law training			23 time			1
4	Good governance training					1 training	1
5	Village level capacity building				2 time	1 training	2
6	Human rights and law training	3 time					1
7	Village/commune data collection strengthening					1 training	1
8	Land law dissemination	3 time		6 time		1 training	3
9	Land registration dissemination/enforcement	2 time					1
10	Land use planning				3 village		1
11	Village/commune border identification		1 time				1
12	Public land takeover prevention					1 training	1
13	Land conflict resolution committee strengthening					1 training	1
14	Dwelling numbering			2000			1

No.	Project Name	Haong Samnam	Reaksmei Sameakki	Trapeang Chour	Sangkae Satob	Ta Sal	Req.Project
		50401	50402	50403	50404	50405	Total
				house			
15	People guard activities formation/strengthening		1 training			1 training	2
16	Local security strengthening					1 time	1
17	Drug business/use prevention		1 training				1
18	Ammunition and weapons law education			23 time			1
19	Temporary dwellers management/control				15 training		1
20	Identification card issued		2 time				1
21	VDC formation/strengthening			8 time			1
22	Women association formation/support					2 training	1
Gender							
1	Gender mainstreaming concept training	3 time					1
2	Gender mainstreaming in CIP		2 training				1
3	Women role in development strengthening/dissemination	3 time	2 training			1 training	3
4	Gender mainstreaming among local people		2 training				1
5	Gender and child rights dissemination					1 training	1
6	Women & Children FP strengthening	3 time					1
7	Facilitation skill training to gender focal point	3 time					1
8	CCWCs strengthening/activation		2 training				1
9	Gender network meeting support/activation	3 time					1
10	Women leadership strengthening/capacity building	3 time					1
11	Woman and children's rights dissemination	3 time	1 training		2 time	2 training	5
12	Women and men roles/rights dissemination			4 time	2 time	2 training	3
13	Women international day organizing		1 time			1 time	2
14	Children's international day celebration		1 time			1 time	2
15	Women/children rights alleviation support				2 time		1
16	Girls rights in access to education dissemination			4 time			1
17	Non-coerce marriage awareness education			4 time			1
18	Tailor skill training			2 time			1
19	Law against domestic violence dissemination	4 time	2 training	2 time	2 time	1 training	5

District Data Book 2009: Development Plans and Projects

No.	Project Name	Haong Samnam	Reaksmei Sameakki	Trapeang Chour	Sangkae Satob	Ta Sal	Req.Project
		50401	50402	50403	50404	50405	Total
20	Rescue children & women from violence		2 training		2 time	1 training	3
21	Trafficking of women/children control activity strengthening				2 time		1
22	Vulnerable children protection activation			4 time			1

Source: CDPD – District Priority Matrix

8.2 Temporary Agreements by Commune, for 2009

At the District Integration Workshop (DIW) the Supporters (donors, agencies, private donors, NGOs, etc.) identify which projects/activities they would like to support or they put forward their own projects to be implemented in a particular commune. Once there is agreement between Commune Councils and Supporters on specific projects a **Temporary Agreement** is signed by the commune and the Supporter to show their mutual commitment to the identified projects/activities.

It is important to keep in mind that such Temporary Agreements do not necessarily result in implementation.

8.2.1 Temporary Agreements for 2009 as per DIW 2008 for Commune: Haong Samnam

Commune GIS	Commune	Temporary Agreements				Supporter	Funding Source	Listed in CIP befor DIW
		Project Name	Quantity	Unit	Est.Cost (K.Riels)			
Economic								
50401	Haong Samnam	Fish raising training	3	training	5000	Department of Agriculture Forestry and Fisheries	PIF	✓
50401	Haong Samnam	Compost fertilizer training	1	training	500	Department of Agriculture Forestry and Fisheries	PIF	✓
50401	Haong Samnam	Rice cultivation technique training	2	training	5000	Lutheran World Federation/Department for world Service		✓
50401	Haong Samnam	Laterite road construction	200	m	5000	Lutheran World Federation/Department for world Service		✓
50401	Haong Samnam	Irrigation canal rehabilitation	200	m	8000	Lutheran World Federation/Department for world Service		✓
50401	Haong Samnam	Family fish pond construction	1	Pond	8000	Lutheran World Federation/Department for world Service		✓
50401	Haong Samnam	Cash credit	1	time	5000	Lutheran World Federation/Department for world Service		☐
50401	Haong Samnam	Vegetable growing training	1	training	500	Department of Agriculture Forestry and Fisheries	PIF	✓
Social								
50401	Haong	Pregnant women encouragement	1	time	8000	Department of Health		☐

Commune GIS	Commune	Temporary Agreements				Supporter	Funding Source	Listed in CIP before DIW
		Project Name	Quantity	Unit	Est.Cost (K.Riels)			
	Samnam	to deliver baby at health center						
50401	Haong Samnam	Motivating pupil's parents for school enrollment	2	schools	800	Department of Education Youth and Sports	PIF	✓
50401	Haong Samnam	Children immunization provision	1	time	8000	Department of Health		✓
50401	Haong Samnam	Family planning	1	time	8000	Department of Health		✓
50401	Haong Samnam	Antenatal care	1	time	8000	Department of Health		✓
50401	Haong Samnam	VHV training	1	training	2000	Department of Health		✓
50401	Haong Samnam	Dengue fever education programme	1	time	2000	Department of Health	PIF	✓
50401	Haong Samnam	Breastfeeding awareness education	1	time	8000	Department of Health		✓
50401	Haong Samnam	Deworming of school children	1	time	2000	Department of Health		✓
50401	Haong Samnam	Malaria education program	1	time	2000	Department of Health		□
50401	Haong Samnam	Impregnated mosquito net provision	1	time	2000	Department of Health		□
50401	Haong Samnam	HIV/AIDS carrier support	1	time	2000	Department of Health	PIF	□
50401	Haong Samnam	Capacity building to midwife	1	time	8000	Department of Health		□
50401	Haong Samnam	Health and sanitation education	1	time	8000	Department of Health		□
50401	Haong Samnam	Literacy class	2	class	400	Department of Education Youth and Sports	PIF	✓
50401	Haong Samnam	Malaria and prevention public awareness education	4	time	1400	Department of Women	PIF	□
50401	Haong Samnam	Self-help group formation	1	time	500	Lutheran World Federation/Department		□

Commune GIS	Commune	Temporary Agreements				Supporter	Funding Source	Listed in CIP before DIW
		Project Name	Quantity	Unit	Est.Cost (K.Riels)			
						for world Service		
50401	Haong Samnam	Poor pupils assistance	1	time	5000	Lutheran World Federation/Department for world Service		<input type="checkbox"/>
50401	Haong Samnam	Literacy class	2	class	3000	Lutheran World Federation/Department for world Service		✓
50401	Haong Samnam	Transmitted disease awareness education and prevention method	1	time	8000	Department of Health		<input type="checkbox"/>
NREM								
50401	Haong Samnam	Community forestry activities support	2	Forestry Community	5000	Lutheran World Federation/Department for world Service		✓
Administration and Security								
50401	Haong Samnam	Microphone equipment support	1	set	1200	Lutheran World Federation/Department for world Service		<input type="checkbox"/>
50401	Haong Samnam	Village capacity building	1	time	500	Lutheran World Federation/Department for world Service		<input type="checkbox"/>
50401	Haong Samnam	Commune capacity building	1	time	500	Lutheran World Federation/Department for world Service		<input type="checkbox"/>
Gender								
50401	Haong Samnam	Law against domestic violence dissemination	2	time	10080	Department of Women	PIF	✓
50401	Haong Samnam	Gender mainstreaming concept training	1	time	40	Department of Women	PIF	✓
50401	Haong Samnam	Women & Children FP strengthening	2	time	10080	Department of Women	PIF	✓
50401	Haong Samnam	Gender network meeting support/activation	3	time	120	Department of Women	PIF	✓

8.2.2 Temporary Agreements for 2009 as per DIW 2008 for Commune: Reaksmei Sameakki

Commune GIS	Commune	Temporary Agreements				Supporter	Funding Source	Listed in CIP befor DIW
		Project Name	Quantity	Unit	Est.Cost (K.Riels)			
Economic								
50402	Reaksmei Sameakki	Cash credit provision	2	village	5000	Lutheran World Federation/Department for world Service		<input type="checkbox"/>
50402	Reaksmei Sameakki	Irrigation canal rehabilitation	300	m	5000	Lutheran World Federation/Department for world Service		✓
Social								
50402	Reaksmei Sameakki	Breastfeeding awareness education	1	time	8000	Department of Health		<input type="checkbox"/>
50402	Reaksmei Sameakki	Literacy class support	1	class	200	Department of Education Youth and Sports	PIF	<input type="checkbox"/>
50402	Reaksmei Sameakki	Family planning	1	training	800	Department of Health		✓
50402	Reaksmei Sameakki	Antenatal care	1	training	800	Department of Health		✓
50402	Reaksmei Sameakki	Malaria awareness education	1	training	2000	Department of Health		✓
50402	Reaksmei Sameakki	Dengue fever education programme	1	training	2000	Department of Health	PIF	✓
50402	Reaksmei Sameakki	Women and children immunization provision	1	time	8000	Department of Health		<input type="checkbox"/>
50402	Reaksmei Sameakki	Village health worker strengthening	1	time	2000	Department of Health		<input type="checkbox"/>
50402	Reaksmei Sameakki	Impregnated mosquito net provision	100	mosqui-net	4000	Department of Health		<input type="checkbox"/>
50402	Reaksmei Sameakki	Child friendly school support	3	schools	5000	Department of Education Youth and Sports	PIF	<input type="checkbox"/>
50402	Reaksmei Sameakki	Midwife capacity building	1	time	300	Department of Health		<input type="checkbox"/>
50402	Reaksmei	Malaria education program	1	time	2000	Lutheran World		<input type="checkbox"/>

Commune GIS	Commune	Temporary Agreements				Supporter	Funding Source	Listed in CIP before DIW
		Project Name	Quantity	Unit	Est.Cost (K.Riels)			
	Sameakki					Federation/Department for world Service		
50402	Reaksmei Sameakki	Village health worker strengthening	1	time	3000	Lutheran World Federation/Department for world Service		<input type="checkbox"/>
50402	Reaksmei Sameakki	Self-help group formation	2	Team	3000	Lutheran World Federation/Department for world Service		<input type="checkbox"/>
50402	Reaksmei Sameakki	HIV/AIDS carriers health care support	1	time	4000	Department of Health	PIF	<input type="checkbox"/>
50402	Reaksmei Sameakki	Literacy class operation	1	class	4000	Lutheran World Federation/Department for world Service		<input type="checkbox"/>
50402	Reaksmei Sameakki	Deworming pills supply to children	1	time	2000	Department of Health		<input type="checkbox"/>
50402	Reaksmei Sameakki	Poor pupils assistance	1	time	4000	Lutheran World Federation/Department for world Service		<input type="checkbox"/>
50402	Reaksmei Sameakki	Ring wells repair	2	well	8000	Lutheran World Federation/Department for world Service		✓
50402	Reaksmei Sameakki	Family planning	1	training	5000	Lutheran World Federation/Department for world Service		✓
50402	Reaksmei Sameakki	Sanitation education program	1	time	8000	Department of Health		<input type="checkbox"/>
50402	Reaksmei Sameakki	Transmitted disease awareness education and prevention method	1	time	8000	Department of Health		<input type="checkbox"/>
NREM								
50402	Reaksmei Sameakki	Firewood saving cooking stove	25	set	2000	Department of Environment	PIF	✓
Administration and Security								
50402	Reaksmei	CCs capacity strengthening	1	time	4000	Lutheran World		<input type="checkbox"/>

Commune GIS	Commune	Temporary Agreements				Supporter	Funding Source	Listed in CIP before DIW
		Project Name	Quantity	Unit	Est.Cost (K.Riels)			
	Sameakki					Federation/Department for world Service		
Gender								
50402	Reaksmei Sameakki	Children's international day celebration	1	time	2000	Lutheran World Federation/Department for world Service		✓
50402	Reaksmei Sameakki	CCWCs strengthening/activation	3	time	120	Department of Women	PIF	✓
50402	Reaksmei Sameakki	Gender mainstreaming among local people	1	time	40	Department of Women	PIF	✓
50402	Reaksmei Sameakki	Women role in development strengthening/dissemination	2	time	1400	Department of Women	PIF	✓
50402	Reaksmei Sameakki	Law against domestic violence dissemination	2	time	1400	Department of Women	PIF	✓
50402	Reaksmei Sameakki	International women's day celebration organizing	1	time	3000	Lutheran World Federation/Department for world Service		□

8.2.3 Temporary Agreements for 2009 as per DIW 2008 for Commune: Trapeang Chour

Commune GIS	Commune	Temporary Agreements				Supporter	Funding Source	Listed in CIP befor DIW
		Project Name	Quantity	Unit	Est.Cost (K.Riels)			
Economic								
50403	Trapeang Chour	Irrigated canal construction	1000	m	6000	Lutheran World Federation/Department for world Service		✓
50403	Trapeang Chour	Vegetable growing training	1	training	2000	Department of Agriculture Forestry and Fisheries	PIF	✓
50403	Trapeang Chour	Earth road construction	2500	m	5000	Lutheran World Federation/Department for world Service		✓

Commune GIS	Commune	Temporary Agreements				Supporter	Funding Source	Listed in CIP before DIW
		Project Name	Quantity	Unit	Est.Cost (K.Riels)			
50403	Trapeang Chour	Dam construction	1	place	5000	Lutheran World Federation/Department for world Service		✓
50403	Trapeang Chour	Rice cultivation technique training	1	training	2000	Department of Agriculture Forestry and Fisheries	PIF	✓
50403	Trapeang Chour	Water gate construction	1	place	6000	Lutheran World Federation/Department for world Service		✓
50403	Trapeang Chour	Vegetable seed provision	20	Kg	3000	Lutheran World Federation/Department for world Service		□
50403	Trapeang Chour	Culvert repair	6	place	6000	Lutheran World Federation/Department for world Service		✓
Social								
50403	Trapeang Chour	Malaria awareness education	1	time	2000	Department of Health		✓
50403	Trapeang Chour	Mosquito nets distribution/treatment	100	mosqui-net	4000	Department of Health		✓
50403	Trapeang Chour	Children immunization provision	1	time	8000	Department of Health		✓
50403	Trapeang Chour	VHV strengthening	1	training	2000	Department of Health		✓
50403	Trapeang Chour	HIV/AIDS infected person assistance	1	time	2000	Department of Health	PIF	✓
50403	Trapeang Chour	Midwife strengthening/training	1	training	8000	Department of Health		✓
50403	Trapeang Chour	Dengue fever awareness education	1	time	2000	Department of Health	PIF	□
50403	Trapeang Chour	Breastfeeding awareness education	1	time	8000	Department of Health		□
50403	Trapeang Chour	Deworming medicine supply	1	time	2000	Department of Health		□

Commune GIS	Commune	Temporary Agreements				Supporter	Funding Source	Listed in CIP before DIW
		Project Name	Quantity	Unit	Est.Cost (K.Riels)			
50403	Trapeang Chour	Transmitted disease awareness education and prevention method	1	time	8000	Department of Health		<input type="checkbox"/>
50403	Trapeang Chour	Literacy class support	3	class	600	Department of Education Youth and Sports		<input type="checkbox"/>
50403	Trapeang Chour	Family planning	1	time	8000	Department of Health		✓
50403	Trapeang Chour	Sanitation education	1	time	8000	Department of Health		✓
50403	Trapeang Chour	Antenatal care	1	time	8000	Department of Health		✓
50403	Trapeang Chour	Cultural center conservation established	1	training	6000	Department of Culture and Fine Arts	PIF	✓
50403	Trapeang Chour	Sanitation education	3	time	300	Lutheran World Federation/Department for world Service		✓
50403	Trapeang Chour	Ring wells construction	8	well	6000	Lutheran World Federation/Department for world Service		✓
50403	Trapeang Chour	Antenatal care	3	time	3000	Lutheran World Federation/Department for world Service		✓
50403	Trapeang Chour	Mosquito nets distribution/treatment	2	time	3000	Lutheran World Federation/Department for world Service		✓
50403	Trapeang Chour	Self-help group formation	4	Team	3000	Lutheran World Federation/Department for world Service		<input type="checkbox"/>
NREM								
50403	Trapeang Chour	Community forestry activities support	1	Team	7000	Department of Environment	PIF	✓
Administration and Security								
50403	Trapeang	Land law dissemination	4	time	4000	Lutheran World		✓

Commune GIS	Commune	Temporary Agreements				Supporter	Funding Source	Listed in CIP before DIW
		Project Name	Quantity	Unit	Est.Cost (K.Riels)			
	Chour					Federation/Department for world Service		
Gender								
50403	Trapeang Chour	Women and children issues responsiveness strengthening through quarterly meeting	3	time	120	Department of Women	PIF	<input type="checkbox"/>
50403	Trapeang Chour	Law against domestic violence dissemination	2	time	1400	Department of Women	PIF	✓
50403	Trapeang Chour	Women & Children FP strengthening	2	time	1400	Department of Women	PIF	<input type="checkbox"/>
50403	Trapeang Chour	Women and men roles/rights dissemination	1	time	40	Department of Women	PIF	✓

8.2.4 Temporary Agreements for 2009 as per DIW 2008 for Commune: Sangkae Satob

Commune GIS	Commune	Temporary Agreements				Supporter	Funding Source	Listed in CIP before DIW
		Project Name	Quantity	Unit	Est.Cost (K.Riels)			
Economic								
50404	Sangkae Satob	Irrigation canal rehabilitation	2	place	5000	Lutheran World Federation/Department for world Service		✓
50404	Sangkae Satob	Compost fertilizer training	2	training	2500	Department of Agriculture Forestry and Fisheries	PIF	✓
50404	Sangkae Satob	Compost fertilizer training	2	training	2500	Department of Agriculture Forestry and Fisheries	PIF	✓
50404	Sangkae Satob	Fish raising training	5	training	5000	Department of Agriculture Forestry and Fisheries	PIF	✓
50404	Sangkae Satob	Dam repairing	4	place	5000	Lutheran World Federation/Department for world Service		✓
50404	Sangkae	Animal raising training	2	training	5000	Lutheran World		✓

Commune GIS	Commune	Temporary Agreements				Supporter	Funding Source	Listed in CIP befor DIW
		Project Name	Quantity	Unit	Est.Cost (K.Riels)			
	Satob					Federation/Department for world Service		
50404	Sangkae Satob	Laterite road repairing	280	m	5000	Lutheran World Federation/Department for world Service		✓
50404	Sangkae Satob	Cash credit	5000	Riels	450	Lutheran World Federation/Department for world Service		✓
50404	Sangkae Satob	Cow bank	1	Head	4000	Lutheran World Federation/Department for world Service		□
50404	Sangkae Satob	Culvert construct	6	place	6000	Lutheran World Federation/Department for world Service		✓
Social								
50404	Sangkae Satob	Capacity building to midwife	1	time	1000	Department of Health		□
50404	Sangkae Satob	Parent education on community kindergarten school	9	time	1200	Department of Women	PIF	□
50404	Sangkae Satob	Community kindergarten strengthening through commune council	1	time	1000	Department of Women	PIF	□
50404	Sangkae Satob	Malaria and prevention public awareness education though village volunteers	4	time	1400	Department of Women	PIF	□
50404	Sangkae Satob	Sanitation education program	1	time	2000	Department of Health		□
50404	Sangkae Satob	Transmitted disease awareness education and prevention method	1	time	2000	Department of Health		□
50404	Sangkae Satob	Souy indigenous culture conservation and community formation	1	time	6000	Department of Culture and Fine Arts	PIF	□

Commune GIS	Commune	Temporary Agreements				Supporter	Funding Source	Listed in CIP befor DIW
		Project Name	Quantity	Unit	Est.Cost (K.Riels)			
50404	Sangkae Satob	Literacy class	2	class	400	Department of Education Youth and Sports	PIF	✓
50404	Sangkae Satob	Kindergarten community class support	1	class	1200	Department of Education Youth and Sports	PIF	□
50404	Sangkae Satob	Child friendly school support	3	schools	5000	Department of Education Youth and Sports	PIF	□
50404	Sangkae Satob	Breastfeeding awareness education	1	time	8000	Department of Health		□
50404	Sangkae Satob	Malaria awareness education	1	time	2000	Department of Health		□
50404	Sangkae Satob	Bicycle for poor pupils	10	set	1600	Lutheran World Federation/Department for world Service		□
50404	Sangkae Satob	Women and children vaccinating support	1	time	8000	Department of Health		□
50404	Sangkae Satob	Family planning program	1	time	8000	Department of Health		□
50404	Sangkae Satob	Deworming pills supply to children under 15 years old	1	time	2000	Department of Health		□
50404	Sangkae Satob	Self-help group formation	6	Team	4000	Lutheran World Federation/Department for world Service		□
50404	Sangkae Satob	HIV/AIDS carrier support	1	time	2000	Department of Health	PIF	□
50404	Sangkae Satob	Community pond construction	1	Pond	5000	Lutheran World Federation/Department for world Service		□
50404	Sangkae Satob	Impregnated mosquito net provision	100	mosqui-net	2000	Department of Health		□
50404	Sangkae Satob	Ring wells construction	4	well	4000	Lutheran World Federation/Department for world Service		✓
50404	Sangkae	Pregnant women	1	time	2000	Department of Health		□

Commune GIS	Commune	Temporary Agreements				Supporter	Funding Source	Listed in CIP befor DIW
		Project Name	Quantity	Unit	Est.Cost (K.Riels)			
	Satob	encouragement to deliver baby at health center						
50404	Sangkae Satob	Dengue fever awareness education and prevention measures	1	time	2000	Department of Health	PIF	<input type="checkbox"/>
50404	Sangkae Satob	VHV strengthening	1	training	2000	Department of Health		✓
Administration and Security								
50404	Sangkae Satob	Microphone equipment support	2	set	4000	Lutheran World Federation/Department for world Service		<input type="checkbox"/>
Gender								
50404	Sangkae Satob	Law against domestic violence dissemination	1	time	4000	Department of Women	PIF	✓
50404	Sangkae Satob	Women/children rights alleviation support	3	time	1000	Department of Women	PIF	✓
50404	Sangkae Satob	Woman and children's rights dissemination	2	time	1040	Department of Women	PIF	✓
50404	Sangkae Satob	Rescue children & women from violence	1	time	40	Department of Women	PIF	✓
50404	Sangkae Satob	Trafficking of women/children control activity strengthening	2	time	1040	Department of Women	PIF	✓

8.2.5 Temporary Agreements for 2009 as per DIW 2008 for Commune: Ta Sal

Commune GIS	Commune	Temporary Agreements				Supporter	Funding Source	Listed in CIP befor DIW
		Project Name	Quantity	Unit	Est.Cost (K.Riels)			
Economic								
50405	Ta Sal	Cash credit	20000	Riels	20000	Lutheran World Federation/Department for world Service		✓

Commune GIS	Commune	Temporary Agreements				Supporter	Funding Source	Listed in CIP before DIW
		Project Name	Quantity	Unit	Est.Cost (K.Riels)			
50405	Ta Sal	Irrigation canal rehabilitation	300	m	4000	Lutheran World Federation/Department for world Service		✓
50405	Ta Sal	Dam construction	1	place	5000	Lutheran World Federation/Department for world Service		✓
50405	Ta Sal	Laterite road repairing	300	m	4000	Lutheran World Federation/Department for world Service		✓
50405	Ta Sal	Mixed farming system training	1	training	3000	Lutheran World Federation/Department for world Service		✓
50405	Ta Sal	Bridge repair	1	place	5000	Lutheran World Federation/Department for world Service		✓
Social								
50405	Ta Sal	Capacity building to midwife	1	time	2000	Department of Health		<input type="checkbox"/>
50405	Ta Sal	HIV/AIDS carrier support	1	time	2000	Department of Health	PIF	<input type="checkbox"/>
50405	Ta Sal	Child friendly school support	3	schools	4000	Department of Education Youth and Sports	PIF	<input type="checkbox"/>
50405	Ta Sal	Dengue fever awareness education and prevention measures	1	time	2000	Department of Health	PIF	<input type="checkbox"/>
50405	Ta Sal	Literacy class support	4	class	800	Department of Education Youth and Sports	PIF	<input type="checkbox"/>
50405	Ta Sal	Mosquito nets distribution/treatment	100	mosqui-net	2000	Department of Health		✓
50405	Ta Sal	VHV strengthening	1	training	2000	Department of Health		✓
50405	Ta Sal	Breastfeeding awareness education	1	time	8000	Department of Health		<input type="checkbox"/>
50405	Ta Sal	Deworming pills supply to children	1	time	8000	Department of Health		<input type="checkbox"/>
50405	Ta Sal	Transmitted disease	1	time	4000	Department of Health		<input type="checkbox"/>

Commune GIS	Commune	Temporary Agreements				Supporter	Funding Source	Listed in CIP before DIW
		Project Name	Quantity	Unit	Est.Cost (K.Riels)			
		awareness education and prevention method						
50405	Ta Sal	Sanitation education program	1	time	8000	Department of Health		<input type="checkbox"/>
50405	Ta Sal	Malaria awareness education	1	training	6000	Department of Health		✓
50405	Ta Sal	Poor pupils assistance	1	time	2000	Lutheran World Federation/Department for world Service		<input type="checkbox"/>
50405	Ta Sal	Children and women vaccination	1	time	8000	Department of Health		✓
50405	Ta Sal	Family planning	1	training	8000	Department of Health		✓
50405	Ta Sal	Kindergarten community class support	1	class	1200	Department of Education Youth and Sports	PIF	<input type="checkbox"/>
50405	Ta Sal	Literacy teacher support	2	class	2000	Lutheran World Federation/Department for world Service		✓
50405	Ta Sal	Self-help group formation	1	Team	2000	Lutheran World Federation/Department for world Service		<input type="checkbox"/>
50405	Ta Sal	Antenatal care	1	training	8000	Department of Health		✓
NREM								
50405	Ta Sal	Establishment of NREM protection community	1	Forestry Community	2400	Department of Environment	PIF	✓
50405	Ta Sal	Establishment of NREM protection community	1	Forestry Community	3000	Lutheran World Federation/Department for world Service		✓
Administration and Security								
50405	Ta Sal	Village level capacity building	1	time	2000	Lutheran World Federation/Department for world Service		✓
50405	Ta Sal	CC capacity strengthening	1	time	2000	Lutheran World Federation/Department for world Service		✓
Gender								

Commune GIS	Commune	Temporary Agreements				Supporter	Funding Source	Listed in CIP before DIW
		Project Name	Quantity	Unit	Est.Cost (K.Riels)			
50405	Ta Sal	Law against domestic violence dissemination	1	time	40	Department of Women	PIF	✓
50405	Ta Sal	Women and men roles/rights dissemination	2	time	1040	Department of Women	PIF	✓
50405	Ta Sal	Women role in development strengthening/dissemination	3	time	120	Department of Women	PIF	✓
50405	Ta Sal	Gender and child rights dissemination	9	time	1200	Department of Women	PIF	✓
50405	Ta Sal	Woman and children's rights dissemination	1	training	1200	Department of Women	PIF	✓
50405	Ta Sal	Woman and children's rights dissemination	2	time	1040	Department of Women	PIF	✓

Source: CDPD, District Level Detail TA resulting from DIW

8.3 Outputs, estimated and actual costs of C/S Fund Projects between 2005 and 2008, by Commune

Commune	Project Type	Budget Year	Output		Quantity	Unit	Unit Cost MR	
			Description	Type			Estimate	Actual
Haong Samnam	Rural Transport	2005	Laterite road	Repair	0.914	Km	19.35	19.38
Haong Samnam	Rural Transport	2007	Laterite road	Repair	3.32	Km	45.51	47.21
Haong Samnam	Rural Transport	2008	Earth road	Repair	0.88	Km	28.83	29.29
Reaksmei Sameakki	Irrigation	2005	Earth dam	Repair	0.358	Km	21.03	20.72
Reaksmei Sameakki	Irrigation	2007	Canal	New	0.879	Km	15.82	20.00
Reaksmei Sameakki	Rural Transport	2007	Earth road	Repair	1.12	Km	20.08	17.00
Reaksmei Sameakki	Rural Transport	2008	Earth road	Repair	0.933	Km	52.48	42.00
Trapeang Chour	Rural Transport	2005	Gravel road	Repair	0.5	Km	10.23	34.19
Trapeang Chour	Rural Transport	2005	Single pipe culvert	New	1	Place	1.47	34.19
Trapeang Chour	Rural Transport	2005	Laterite road	New	1.24	Km	21.59	34.19
Trapeang Chour	Rural Transport	2006	Earth road	Repair	1.99	Km	61.18	31.16
Trapeang Chour	Rural Transport	2007	Earth road	Repair	1.59	Km	33.48	31.49
Trapeang Chour	Rural Transport	2008	Earth road	New	1	Km	25.49	31.60
Sangkae Satob	Rural Transport	2005	Laterite road	New	0.953	Km	21.93	22.26
Sangkae Satob	Irrigation	2006	Earth dam	Repair	0.248	Km	16.47	18.00
Sangkae Satob	Irrigation	2006	Single pipe Culvert with gate	New	1	Place	4.22	18.00
Sangkae Satob	Rural Transport	2007	Laterite road	Repair	0.962	Km	17.53	16.20
Sangkae Satob	Rural Transport	2008	Earth road	Repair	1.246	Km	50.42	50.42
Ta Sal	Rural Transport	2005	Earth road	Repair	3.148	Km	3.10	37.78
Ta Sal	Rural Transport	2006	Earth road	New	1.64	Km	24.28	25.52
Ta Sal	Rural Transport	2007	Earth road	Repair	2.08	Km	70.87	35.05
Ta Sal	Rural Transport	2008	Earth road	Repair	1.55	Km	33.77	32.53

Source: PID

8.4 Total Expenditure on C/S Fund Projects by sector and commune between 2005 and 2008

Sector	Total Cost in Million Riels				
	Haong Samnam	Reaksmei Sameakki	Trapeang Chour	Sangkae Satob	Ta Sal
Irrigation		40.72		18.00	
Rural Transport	95.88	59.00	128.45	88.88	130.88

Source: PID

8.5 Actual 2009 C/S Fund projects by Commune

Commune	Project Type	Project Output		Quantity	Unit	Fund Source (Riels)		
		Description	Type			Total	C/S	Local Contribution
Haong Samnam	Rural Transport	Natural Gravel road	Repair	3.1	km	44,031,700	43,631,700	400,000
Reaksmei Sameakki	Rural Domestic Water Supplies	Water supply pond	Repair	1	Place	28,233,800	27,917,200	316,600
Trapeang Chour	Rural Transport	Natural Gravel road	Repair	3.6	km	59,348,400	59,048,400	300,000
Sangkae Satob	Rural Domestic Water Supplies	Water supply pond	New	1	Place	39,435,010	39,135,010	300,000
Ta Sal	Rural Transport	Natural Gravel road	Repair	1.53	km	31,874,900	31,574,900	300,000

Source: PID

9 District level Projects from 2006 to 2009

District Initiative Projects (DIPs) are funded by Danida, DFID and PSDD (UNDP, DFID and SIDA).

Funding for 2006-2008

Between 2006 and 2008 there were 14 provinces funded by PSDD and 10 by Danida and DFID. The list of provinces and who funded these is below

Danida and DFID funded DIPs:

Kampong Cham	Kampong Speu	Koh Kong	Kratie	Monduliri
Pursat	Ratanakiri	Siem Reap	Sihanoukville	Kep

PSDD funded DIPs:

Banteay Meanchey	Battambang	Kampong Chhnang	Kandal	Phnom Penh
Prey Veng	Svay Rieng	Takeo	Kampong Thom	Preah Vihear
Stung Treng	Kampot	Oddar Meanchey	Pailin	

Funding for 2009

In 2009 there was a change to the number of provinces funded by the two streams. Danida and DFID were still funding the same 10 provinces they had been funding the previous three years, but two more provinces were added *Kampong Thom and Kampot*. Now PSDD funds 12 provinces and Danida and DFID fund 12.

9.1 District Initiative Infrastructure Projects from 2006 to 2009

9.1.1 District Initiative Infrastructure Projects for 2006 to 2008

Date	Project Name	Implementing Agencies	Budget (US\$)	Project Output & Capacity	Number of Beneficiaries
2007	Repair road of Krang	Inter-commune	19,781.50		

9.1.2 District Initiative Infrastructure Projects in 2009

No District Initiative Infrastructure Projects have been implemented in this district for 2009

9.2 District Initiative Service Projects from 2006 to 2009

9.2.1 District Initiative Service Projects for 2006 to 2008

Date	Project Names	Implementing agencies	Budget (US\$)	Project Output & Capacity	Number of Beneficiaries
2007	Demarcation boundaries between communes and communes	District Land	2,242.00		
2007	Dissemination on land law and methods for solving land conflicts	District Land	901.50		
2007	Strengthening community forestry	Forestry Amin Sangkat	588.00		
2007	Establish community forestry, community bamboo forestry and support existing communities	Forestry Amin Sangkat	2,003.00		
2007	Dissemination on fishery law	District Environment	880.50		
2007	Dissemination on environment law	District Environment	365.00		
2007	Training on environment law	District Environment	220.00		
2008	Training on cattle, raising of pig, chicken and duck	District AGRI	1,346.80	7 trainings	280 peoples (F: 150)
2008	Training and demo on family fish raising	District AGRI	1,678.00	5 training, 10 family ponds demo, 12300 fishfingerlings	250 peoples (F: 150)
2008	Training on corn production	District AGRI	1,357.80	7 trainings	200 peoples (F:120)
2008	Training on bamboo processing	Health center	1,314.20	7 trainings	280 peoples (F: 150)
2008	Establishment of management committee for natural and cultural lake	Department of Culture	11,258.20	1 community	9052 peoples (F: 4921)
2008	Support community forestry of Phnom Chas	Forestry Admin	8,541.80	1 community forestry	9800 peoples (F: 5500)
2008	Tree planting	Forestry Admin	1,503.20	10000 tree seedling	200 peoples (F:120)

9.2.2 District Initiative Service Projects in 2009

Project Name	Sector	Implementing Agency	Budget	Project outputs/ capacities	No. of Beneficiaries		Progress	Remarks on Issues of Progress
					Total	Female		
Training on Village veterinary to become agricultural extension	AGR	Agriculture Office	\$5,590.00	2 courses	70	-	100%	
Cow-buffalo vaccination	AGR	Agriculture Office	\$11,374.00	14000 heads	11,988	5,469	100%	
Training on Rice production and supports	AGR	Agriculture Office	\$782.50	7 courses	210	119	0%	
Training on small-scale fish culture and Demo	AGR	Agriculture Office	\$1,255.00	4 courses	14,937	7,741	0%	

Project Name	Sector	Implementing Agency	Budget	Project outputs/ capacities	No. of Beneficiaries		Progress	Remarks on Issues of Progress
					Total	Female		
Community forestry establishment in protected area	NRM	Environment Office	\$4,201.00	1 place	19,691	10,234	60%	
Strengthening and support Bamboo community	NRM	Environment Office	\$168.50	2 times	10,478	5,512	100%	
Strengthening and support community forestry of Ouprich	NRM	Forestry Admin	\$3,629.00	1 place	11,970	6,179	80%	

9.3 Inter Commune Council Projects in 2008 and 2009

9.3.1 ICC Projects in 2008

No ICC projects in this district at this time

9.3.2 ICC Projects in 2009

No ICC projects in this district at this time

Source: ICC project, Ministry of Interior (DoLA), -UNDP project for Local Governance – DDLG

9.4 Other Projects in 2008 and 2009

9.4.1 RPRP

There are no RPRP projects being implemented in this district or province at this time. The RPRP is only being implemented in Svay Rieng and Prey Veng

9.4.1.1 RPRP Projects from 2006 to 2008

No RPRP projects in this district at this time

9.4.1.2 RPRP Projects in 2009

No RPRP projects in this district at this time

9.4.2 Seth Korma

9.4.2.1 Seth Koma 2007

District		Basedth	Chbar Mon	Kong Pisei	Aoral	Odongk	Phnum Sruoch	Samraong Tong	Thpong	Total
# of Communes		15	5	13	5	15	12	15	7	87
# of Villages		218	56	250	69	251	145	295	74	1358
CCWC Operational cost		\$4,174	\$1,258	\$7,830	\$1,362	\$4,438	\$3,276	\$7,871	\$2,487	\$32,696
Events (# decided by commune)		\$1,500	\$500	\$1,600	\$500	\$1,500	\$1,200	\$1,750	\$800	\$9,350
CPS	# of teachers	0	0	64	0	0	0	66	10	140
	Budget for teachers	\$0	\$0	\$4,320	\$0	\$0	\$0	\$4,455	\$675	\$9,450
	# of CPS shelter	0	0	4	0	0	1	10	6	21
	Total cost	\$0	\$0	\$4,800	\$0	\$0	\$1,375	\$8,625	\$7,200	\$22,000
	Carry over of 2006 shelter construction	\$0	\$0	\$0	\$0	\$0	\$0	\$3,160	\$0	\$3,160
Pilot PHAST/ CLTS		\$1,400	\$1,400	\$1,400	\$1,400	\$1,400	\$1,400	\$1,400	\$1,400	\$11,200
Total		\$7,074	\$3,158	\$19,950	\$3,262	\$7,338	\$7,251	\$27,261	\$12,562	\$87,856

Source: UNICEF

9.4.2.2 Seth Koma 2008

Description		Basedth	Chbar Mon	Kong Pisei	Aoral	Odongk	Phnum Sruoch	Samraong Tong	Thpong	Total
# of C/S		15	5	13	5	15	12	15	7	87
# of Village		218	56	250	69	251	145	295	74	1358
CCWC Ope. cost		\$5,616	\$1,672	\$5,600	\$1,828	\$6,012	\$4,140	\$6,540	\$2,288	\$33,696
Unearmarked budget		\$1,200	\$600	\$900	\$600	\$900	\$900	\$900	\$600	\$6,600
Events (#decided by C/S)		\$3,000	\$1,000	\$2,900	\$1,000	\$3,000	\$2,400	\$3,250	\$1,500	\$18,050
CPS	# old teachers	0	0	64	0	0	1	66	10	141
	# new teachers	6	0	5	5	6	8	5	5	40
	Old Teacher allowance	\$0	\$0	\$4,320	\$0	\$0	\$90	\$4,455	\$675	\$9,540
	New Teacher allowance	\$225	\$0	\$188	\$188	\$225	\$300	\$188	\$188	\$1,500
	# of CPS shelter	0	0	5	0	0	0	4	4	13
	Total cost for shelter	\$0	\$0	\$4,000	\$0	\$0	\$0	\$3,200	\$3,200	\$10,400
CLTS(CCWC Piloting of PHAST/CLTS 2007)		\$100	\$100	\$100	\$100	\$100	\$100	\$100	\$100	\$800
Total Initial allocated budget		\$10,041	\$3,272	\$17,908	\$3,616	\$10,137	\$7,830	\$18,533	\$8,451	\$79,786

Source: UNICEF

9.4.2.3 Seth Koma 2009

Description		Basedth	Chbar Mon	Kong Pisei	Aoral	Odongk	Phnum Sruoch	Samraong Tong	Thpong	Total
# of Communes		15	5	13	5	15	12	15	7	87
# of Villages		218	56	250	69	251	145	295	74	1358
Project 01: Local Governance for Children's Rights Program (LGCGR)	CCWC Ope. cost	\$3,000	\$1,000	\$2,600	\$1,000	\$3,000	\$2,400	\$3,000	\$1,400	\$17,400
	Discretionary Funds	\$0	\$0	\$0	\$0	\$0	\$500	\$500	\$500	\$1,500
	Events	\$750	\$250	\$650	\$250	\$750	\$600	\$750	\$350	\$4,350
	Health Intervention	\$1,600	\$0	\$1,600	\$1,000	\$1,600	\$1,800	\$1,000	\$1,400	\$10,000
	CPS Teacher allowance	\$203	\$0	\$4,320	\$135	\$203	\$203	\$4,455	\$675	\$10,193
	New CPS shelter	\$0	\$0	\$800	\$0	\$800	\$800	\$800	\$0	\$3,200
	Renovation of CPS shelter	\$600	\$0	\$1,500	\$300	\$300	\$0	\$600	\$0	\$3,300
	CPS materials and furniture	\$120	\$0	\$2,560	\$80	\$120	\$120	\$2,640	\$400	\$6,040
	PE	\$90	\$0	\$1,920	\$60	\$90	\$90	\$1,980	\$300	\$4,530
	Social Services Mapping	\$1,744	\$448	\$2,000	\$552	\$2,008	\$1,160	\$2,360	\$592	\$10,864
	BR	\$0	\$0	\$0	\$0	\$0	\$216	\$1,656	\$144	\$2,016
Project 02: Water, Sanitation and Hygiene (WASH)	Monitoring CLTS Implementation 2007-2008	\$200	\$100	\$450	\$0	\$200	\$400	\$1,500	\$400	\$3,250
	CLTS 2009 Implementation	\$0	\$0	\$0	\$0	\$0	\$2,887	\$18,543	\$2,110	\$23,539
	PHAST	\$443	\$0	\$2,658	\$0	\$0	\$2,658	\$7,531	\$2,215	\$15,505
	PHAST for CPS Teacher	\$229	\$0	\$4,685	\$157	\$223	\$220	\$4,842	\$752	\$11,107
	Advocacy	\$1,500	\$500	\$1,300	\$500	\$1,500	\$1,200	\$1,500	\$700	\$8,700
Carry over		\$0	\$0	\$0	\$0	\$344	\$637	\$0	\$0	\$981
Total		\$10,479	\$2,298	\$27,043	\$4,034	\$11,137	\$15,889	\$53,657	\$11,938	\$136,475

Source: UNICEF

SECTION D: SERVICES AND ORGANIZATIONS

10 Infrastructure

10.1 Length of and Expenditure on Roads in 2008, by District

Roads	KSP	Phnum Srouch	Kong Pisey	Boseth	Chhba Mon	Tporng	Oudong	Oral	Samrong tong
Length of paved road in the district	113	20	22	0	29	0	33	0	9
Length of unpaved roads in the district	1,555	270	197	208	57	60	489	152	121
Amount spent on construction of roads in 2008 (\$)	255,108	n/a	32,000	79,260	n/a	18,049	n/a	n/a	125,799
Amount spent on repair and rehabilitation of roads in 2008 (\$)	31,601	n/a	0	18,293	n/a	0	n/a	n/a	13,308

Note 1: Please note that these data are not necessarily complete or correct. The data are derived from government agencies at provincial and district level which used different recording systems, did not always have complete data or were, sometimes, less than willing to share their data.

Note 2: Please be aware that these data are incomplete due to the fact that the amounts for the construction, repair and rehabilitation recorded reflect only funds provided by the government, not the contributions by any other parties.

10.2 Scale of and Expenditure on Irrigation in 2008, by District

Irrigation	KSP	Phnum Srouch	Kong Pisey	Boseth	Chhba Mon	Tporng	Oudong	Oral	Samrong tong
Number of irrigation schemes operating in 2008	30	5	5	8	2	2	3	2	3
Total nr of hectares under irrigation in dry season 2008	5,406	65	788	165	401	262	650	75	3,000
Total funds spent in 2008 on construction of irrigation systems (\$)	15,899	n/a	n/a	0	n/a	n/a	0	n/a	15,899
Total funds spent in 2008 on rehabilitation/repair of irrigation systems (\$)	36,759	n/a	n/a	16,400	n/a	n/a	20,359	n/a	0
Total funds spent in 2008 on operation and maintenance (\$)	-	n/a	n/a	0	n/a	n/a	0	n/a	0

Note 1: Please note that these data are not necessarily complete or correct. The data are derived from government agencies at provincial and district level which used different recording systems, did not always have complete data or were, sometimes, less than willing to share their data.

Note 2: Please be aware that the data above are incomplete as these only reflect funds provided by the government, not the contributions by farmers or other parties.

10.3 Power Supply in 2008, by District

Electricity	KSP	Phnum Srouch	Kong Pisey	Boseth	ChhbaMon	Tporng	Oudong	Oral	Samrong tong
Total number of electricity connections to households	10,776	1,200	590	525	4,693	0	2,184	0	1,548
Total number of electricity connections to agencies, companies, organizations	6	1	0	0	3	0	1	0	1
Total volume in KWh of electricity consumed last in 2008	3,224,400	288,000	70,800	94,680	1,689,480	0	524,160	0	557,280
Total amount collected from users for consumed electricity (\$)	1,998,580	144,000	49,560	86,740	1,013,688	0	314,496	0	390,096
Per capita electricity consumption in 2008 in Kwh	22	240kw	96kw	432kw	468kw	0	265 kw	0	432kw

Note 1: Please note that these data are not necessarily complete or correct. The data are derived from government agencies at provincial and district level which used different recording systems, did not always have complete data or were, sometimes, less than willing to share their data.

Note 2: These data only record electricity provided by electricity companies and does not include homes powered by generators or batteries (for this information see Section B: General Profile, Part 1: General Information; table 1.3.1 and chart 1.3.4).

Note 3: In most provinces electricity is only provided through town-based networks

Note 4: Per capita consumption is calculated by dividing the total volume of electricity produced in 2008 by the number of people living in each district as per the 2008 census (for the provincial data it is calculated against the number of people living in the province)

11 Health Facilities

Please note that the Operational District (health) boundaries are different to the administrative district boundaries. Therefore the data provided here shows the facilities, staff, NGOs etc in each Operational District within the province NOT the administrative district.

Acronyms

Com Cov	Commune Covered	MW2	Secondary Midwives
CPA	Complementary Package of Activities	NU1	Primary Nurse
Dr	Doctor	NU2	Secondary Nurse
FDH	Former District Hospital	OD	Operational District
HC	Health Center	Others	Other Staff
HC (NB)	Health Center no building	PHD	Provincial Health Department
HP	Health Post	Pop 04-05	Population Covered 2004 or 2005
MA	Medical Assistant	RH	Referral Hospital
MPA	Minimum Package of Activities	Vil Cov	Village Covered
MW1	Primary Midwives	VIL-HC	Distance from Village to Health Center

11.1 Health Facilities in the Province, by Operational District

Kompong Speu	OD	RH	HC	HP
Kampong Speu.	1		22	
Kong Pisey	1	1	19	
Oudaung	1	1	9	
Total	3	2	50	0

11.2 Health Facilities and Staff in the province, by Operational District

This table shows health facilities, staff and coverage of health facilities in each operational district.

No	Facility Name	Type	Class	Dr	Ma	Nu2	Nu1	Mw2	Mw1	Others	Com Cov	Vil Cov	Pop. 04-05
Kampong Speu.													
1	Chbar Thum	HC	MPA	0	1	4	1	1	0	0	3	18	13,542
2	Dom Kravan	HC	MPA	1	0	2	6	2	1	1	2	19	12,925
3	Kaheng Ta Or	HC	MPA	0	0	2	4	1	0	0	2	35	16,913
4	Kraing Pneay	HC	MPA	0	0	0	4	1	0	0	2	36	19,325
5	Kraing Skuh	HC	MPA	0	0	2	4	0	1	0	2	33	16,471
6	Krosang Chek	HC	MPA	0	0	1	3	1	0	0	2	28	16,378
7	Krouch Meas	HC	MPA	0	0	2	4	0	1	0	2	40	15,496

District Data Book 2009: Services and Organizations

No	Facility Name	Type	Class	Dr	Ma	Nu2	Nu1	Mw2	Mw1	Others	Com Cov	Vil Cov	Pop. 04-05
8	Moha Sang	HC	MPA	0	0	1	4	1	1	1	2	34	14,901
9	Oral	FDH	MPA	0	0	8	6	1	0	1	8	68	21,407
10	Phnum Touch Pang Lovea	HC	MPA	0	1	0	2	1	0	0	2	36	17,593
11	Prey Chumpou Mean Ang	HC	MPA	0	1	2	3	0	0	0	5	40	20,685
12	Roka Koh	HC(NB)	None	0	0	0	0	0	2	0	1	12	7,156
13	Roka Tep	HC	MPA	0	1	4	5	3	1	0	2	19	18,274
14	Roleang Chak	HC	MPA	0	0	0	1	0	0	0	3	26	11,970
15	Roleang Sen	HC	MPA	0	0	2	4	1	1	0	2	40	19,257
16	Samraong Rumduol	HC	MPA	0	0	1	3	0	0	0	2	15	10,010
17	Samraong Sambo	HC	MPA	0	1	2	3	1	0	0	2	36	14,079
18	Ta Lat	HC	MPA	0	0	1	5	1	0	1	3	41	23,848
19	Traeng Trayueng	HC	MPA	1	1	4	3	1	0	1	3	53	32,050
20	Trapeang Kong	HC	MPA	0	0	3	5	1	1	0	1	29	13,896
21	Trapeang Kraloeung	FDH	MPA	2	1	3	9	3	1	0	2	26	14,622
Total:				4	7	44	79	20	10	5	53	684	350,798
Kong Pisey													
1	Voa Sa	HC	MPA	0	1	1	4	1	0	0	1	23	14,983
2	Barsedth Pomreal	FDH	MPA	0	0	2	9	1	1	1	2	40	21,886
3	Chongruk	HC	MPA	0	1	0	10	0	2	0	1	25	13,414
4	Kak Preah Khe	HC	MPA	0	0	1	1	0	1	0	2	23	12,271
5	Kat Phluk Pheakdei	HC	MPA	0	0	2	0	0	1	0	2	20	14,173
6	Moha Russei	HC	MPA	0	0	2	1	0	0	0	1	22	9,534
7	Nitean Chamroeun	HC	MPA	0	0	0	2	0	0	0	2	26	14,082
8	Phong	HC(NB)	None	0	0	2	1	0	0	0	1	13	8,717
9	Pichr Muni Teuk La-ak	HC	MPA	0	0	1	0	1	0	0	2	25	11,023
10	Pou Angkrang	HC	MPA	0	0	1	1	0	0	0	2	22	18,012
11	Preah Nipean	HC	MPA	0	0	2	2	1	0	0	1	27	12,456
12	Prey Nheat	HC(NB)	None	0	0	1	0	0	1	1	1	25	10,277
13	Prey Vihear	HC	MPA	0	0	1	2	0	0	0	1	19	10,061
14	Rumpea Mean Chey	HC	MPA	0	1	2	0	1	0	0	2	25	14,777
15	Sdok	HC	MPA	0	0	0	0	0	0	0	2	20	9,585
16	Snam Krapeu	HC	MPA	0	0	1	2	0	0	0	1	24	12,980
17	Srang	HC	MPA	0	0	2	1	0	1	0	2	21	12,434
18	Tuol Ampil	HC	MPA	0	0	1	0	0	1	0	1	15	10,057
19	Tuol Sala Svay Chacheb	HC	MPA	0	0	1	0	0	0	0	2	32	16,616

No	Facility Name	Type	Class	Dr	Ma	Nu2	Nu1	Mw2	Mw1	Others	Com Cov	Vil Cov	Pop. 04-05
Total:				0	3	23	36	5	8	2	29	447	247,338
Oudaung													
1	Veal Ang Popel	HC	MPA	0	0	1	3	1	1	0	2	35	14,772
2	Amleang	HC	MPA	0	0	1	3	0	0	0	1	11	8,019
3	Anluong Chrey	HC	MPA	0	0	1	2	0	2	1	1	10	10,217
4	Cheung Roas Samaki	HC	MPA	0	0	0	0	0	2	0	2	31	13,862
5	Damnak Chan	HC	MPA	0	1	0	2	0	0	0	2	33	12,502
6	Damnak Smach	HC	MPA	0	0	1	0	0	1	4	1	18	8,316
7	Dom Kvet	HC	MPA	0	0	1	1	0	1	0	1	2	1,799
8	Khsem Khsan Trach Torng	HC	MPA	0	1	0	2	0	2	0	2	36	16,339
9	Monor Rung Roeang	FDH	MPA	0	0	1	3	0	0	0	2	17	12,385
Total:				0	2	6	16	1	9	5	14	193	98,211
Total All				4	12	73	131	26	27	12	96	1324	696,347

Source: MEDiCAM – Infrastructure - (http://www.medicam-cambodia.org/hsi/health_system/srch/index.asp?cboLcn=6&cmdSearch=Search&cboCHName=&cboType=)

11.3 Deliveries in 2007 in the Province, by Operational District

OD	Deliveries	Deliveries at home		Deliveries	Total deliveries	Total deliveries
	at HC	By Health Staff	ByTBAs	at RH	by Health Staff	by health staff and TBAs
Kampong Speu	515	2384	4716	571	3470	8186
Kong Pisey	524	2101	1655	67	2692	4347
Ou Dongk	157	984	1968	243	1384	3352
<i>Sub-total</i>	<i>1196</i>	<i>5469</i>	<i>8339</i>	<i>881</i>	<i>7546</i>	<i>15885</i>

Source: MoH, Annual Statistics 2007

12 Education²

12.1 Schools, Classes, Students, Staff, for for all levels, for 2007/2008 by District

District	Number of Schools	Disadv. Schools	Number of Classes	Classes in Pagoda	Enrollment		Repeaters		Teaching Staff		Non-Teaching Staff		Total Staff	
					Total	Girl	Total	Girl	Total	Female	Total	Female	Total	Female
Barset	59	0	610	5	29,305	13,762	3,201	1,491	508	91	115	8	623	99
Chbar Morn	30	0	317	0	14,881	6,494	674	221	409	206	131	52	540	258
Korng Pisei	75	0	634	0	28,479	13,010	2,231	959	690	187	150	20	840	207
Oral	28	0	172	0	6,849	3,236	1,060	500	123	20	24	2	147	22
Oudong	79	0	712	1	32,280	14,940	3,440	1,464	696	213	145	20	841	233
Phnom Sruoch	60	0	523	7	24,492	11,469	1,809	749	415	124	93	15	508	139
Samrong Torng	83	0	732	0	32,843	15,297	3,110	1,356	856	338	226	49	1,082	387
Thporng	37	1	282	6	13,464	6,376	1,589	705	227	50	44	2	271	52
Whole Province	451	1	3,982	19	182,593	84,584	17,114	7,445	3,924	1,229	928	168	4,852	1,397
- Urban Area	30	0	317	0	14,881	6,494	674	221	409	206	131	52	540	258
- Rural Area	393	1	3,493	19	160,863	74,854	15,380	6,724	3,392	1,003	773	114	4,165	1,117
- Remote Area	28	0	172	0	6,849	3,236	1,060	500	123	20	24	2	147	22

12.2 Characteristics of Schools and School Principals for 2007/2008 by Commune

Commune	Number of Schools				2 - Shift	Floating	Schools	Attached	Schools Without		Characteristics of School Principals (Incharge)			
	Pre-Sch	Primary	College	Lycee	Schools	Schools	in Pagoda	Pre-Sch	Water Sup.	Latrine	Avg. Age	Avg. Service	U.Sec+ Ed.	Female
Haong Samnam	0	2	1	0	2	0	1	0	2	1	28.1	3.0	1	0
Reaksmei Sameakki	0	2	0	0	2	0	0	0	1		40.4	8.5	0	0
Trapeang Chour	0	12	1	0	5	0	0	0	5	4	37.1	9.3	2	0
Sangkae Satob	1	4	0	1	4	0	0	1	2	1	34.2	14.0	2	0
Ta Sal	0	4	0	0	4	0	0	0	1		26.4	5.3	1	0

² All the data for section 12 comes from the Ministry of Education, Youth and Sport (MoEYS)

12.3 Enrolment by Level of Education, 2006/2007 by Commune

Commune	School	Pre school		Primary School		Lower Secondary School		Upper Secondary School		Enrolment	
		Total	Female	Total	Female	Total	Female	Total	Female	Total	Female
Haong Samnam	2	0	0	830	391	0	0	0	0	830	391
Reaksmei Sameakki	3	0	0	733	381	0	0	0	0	733	381
Trapeang Chour	11	0	0	2584	1097	121	45	0	0	2705	1142
Sangkae Satob	5	0	0	1417	706	168	57	0	0	1585	763
Ta Sal	3	0	0	648	302	0	0	0	0	648	302

12.4 Enrolment by Level of Education, 2007/2008 by Commune

Commune	School	Pre school		Primary School		Lower Secondary School		Upper Secondary School		Enrolment	
		Total	Female	Total	Female	Total	Female	Total	Female	Total	Female
Haong Samnam	3	0	0	792	424	50	19	0		842	443
Reaksmei Sameakki	2	0	0	543	267	0	0	0		543	267
Trapeang Chour	13	0	0	2378	1106	167	81	0		2545	1187
Sangkae Satob	6	35	15	1503	715	197	78	25	9	1760	817
Ta Sal	4	0	0	1159	522	0	0	0		1159	522

12.5 Aspects of Enrolment for 2007/2008 by Commune

Commune	% Repeaters (Total)			% Over-age Enrollment (Total)			% Repeaters (Girl)			% Over-age Enrollment (Girl)		
	Primary	L.Sec.	U.Sec.	Primary	L.Sec.	U.Sec.	Primary	L.Sec.	U.Sec.	Primary	L.Sec.	U.Sec.
Haong Samnam	17.6	0.0	0.0	37.0	82.0	0.0	20.5	0.0	0.0	35.4	68.4	0.0
Reaksmei Sameakki	11.6	0.0	0.0	33.9	0.0	0.0	8.6	0.0	0.0	30.3	0.0	0.0
Trapeang Chour	20.8	0.0	0.0	27.3	80.8	0.0	21.4	0.0	0.0	27.7	79.0	0.0
Sangkae Satob	11.4	0.0	0.0	32.2	86.8	48.0	10.1	0.0	0.0	34.1	82.1	22.2
Ta Sal	16.7	0.0	0.0	22.2	0.0	0.0	15.5	0.0	0.0	26.6	0.0	0.0

12.6 School Buildings for all schools in the District for 2007/2008, by Commune

Commune	Total Number of		Concrete/Brick Structure		Wooden Structure		Bamboo Structure		New Buildings		Buildings Without Good		
	Buildings	Rooms	Buildings	Rooms	Buildings	Rooms	Buildings	Rooms	Repaired	Constructed	Floor	Roof	Wall
Haong Samnam	5	15	2	9	3	6	0	0	1	2	1	1	1
Reaksmei Sameakki	2	10	1	6	1	4	0	0	0	0	0	0	0
Trapeang Chour	18	67	11	50	6	14	1	3	0	4	1	1	2
Sangkae Satob	8	34	5	24	3	10	0	0	2	0	3	2	2
Ta Sal	7	28	5	22	2	6	0	0	0	0	2	1	1

12.7 Conditions of Classrooms and Existence of Separate School Office and Library, by Commune

Commune	Number of Class rooms	Number of Classrooms			Classrooms Without Good			Number of Furniture needed				Schools with Separate	
		in Pagoda	New Repaired	New Constr.	Floor	Roof	Wall	Desks	Chairs	Black-board	Teacher Table	Office	Library
Haong Samnam	12	0	1	8	3	3	3	60	5	2	7	1	1
Reaksmei Sameakki	9	0	0	0	0	0	0	45	39	6	3	1	0
Trapeang Chour	50	0	0	18	5	5	3	35	13	5	6	5	3
Sangkae Satob	27	0	3	0	8	5	5	51	20	0	5	4	2
Ta Sal	23	0	0	0	6	3	3	170	3	3	173	4	0

12.8 Community Participation and Financing across all schools in the District for 2007/2008 by Commune

Commune	Parent Association				Commu. Teachers	Teaching Monks	PAP Fund (Riel)		Number of Schools Obtaining Funds from				
	Exists	Held Meet	Total	Female			per Student	per School	Sch. Income	Community	Gvt. For building	Abroad	IOs/NGOs
Haong Samnam	2	2	5	2	0	0	8,080	5,171,000	0	0	0	0	0
Reaksmei Sameakki	2	2	5	0	0	0	-	-	0	0	0	0	0
Trapeang Chour	9	9	4	1	0	0	7,016	2,468,467	0	1	1	1	0
Sangkae Satob	5	4	5	0	0	0	8,972	3,326,500	0	1	0	0	0
Ta Sal	4	3	4	1	0	0	6,279	1,547,750	0	1	0	0	0

12.9 Percentage Student Flow Rates and Graduation by level 2006/2007, by Commune

Commune	Primary Level (Grades 1-6)			Lower Secondary Level (Grades 7-9)			Upper Secondary Level (Grades 10-12)			Successful Candidates		
	Promotion	Repetition	Dropout	Promotion	Repetition	Dropout	Promotion	Repetition	Dropout	Grade 6	Grade 9	Grade 12
Haong Samnam	64.9	16.7	18.3	0.0	0.0	0.0	0.0	0.0	0.0	30	0	0
Reaksmei Sameakki	74.8	15.0	10.2	0.0	0.0	0.0	0.0	0.0	0.0	10	0	0
Trapeang Chour	54.0	18.5	27.5	71.9	0.0	28.1	0.0	0.0	0.0	127	0	0
Sangkae Satob	79.8	12.1	8.1	70.2	0.0	29.8	0.0	0.0	0.0	65	24	0
Ta Sal	78.5	19.6	1.9	0.0	0.0	0.0	0.0	0.0	0.0	61	0	0

13 Staff and Resources at the District

This chapter presents data from the District Information System, collected around the middle of 2009 unless otherwise specified.

13.1 District Councilors elected in 2009

Name	Sex	Year of Birth	Function	Phone
កែវ ធឿន	M	1955	Chairperson of The Council	017-338 127
ហែម សុភី	M	1949	Councillor	092-327 879
កែវ សៀន	M	1947	Councillor	092-897 174
នេត សាវី	M	1950	Councillor	092-844 005
សេង សំរុង	F	1981	Councillor	092-378 561
លី សុខលាង	M	1983	Councillor	011-277 245
ហែម សុខអេង	M	1954	Councillor	092-295 186
ចែម សាវីន	M	1953	Councillor	092-646 904
ភឿន សារ៉ុន	F	1982	Councillor	097-956 9071
ប៉ក់ រាម	M	1954	Councillor	012-347 528
អ៊ុក ស៊ីយ៉េន	M	1949	Councillor	092-624 674
ស៊ិន ស៊ិន	M	1952	Councillor	092-393 684
ប្រាក់ សុផាត	M	1953	Councillor	017-263 392

13.2 Committees of the Council

Please note at the time of producing the district data books the composition of the committees was not known for all district councils and therefore data were not available for 13.2.1, 13.2.2, 13.2.3.

13.2.1 Technical Facilitation Committee

13.2.2 Women's and Children's Affairs Committee

13.2.3 Procurement Committee

13.3 Board of Governors

Name	Sex	DoB	Function	Salary Level	Body	Phone
ចែម សារីម	M	1954	District Governor	ក.៣.៤	High Ranking Civil Servant	012-267 296
មួង ធី	M	1969	District Deputy Governor	ខ.២.៧	Medium Civil Servant	012-410 878
ឃ្លាំង យួង	F	1956	District Deputy Governor	ខ.៣.១	Medium Civil Servant	012-761 435
ជា ហៀន	M	1956	District Deputy Governor	ខ.១.៤	Medium Civil Servant	012-940 961

13.4 Offices under Sala Krong, Sala Srok and Sala Khan

Office Name	Chief		Deputy Chief		No. of Staff				Office Area (m2)	No of vehicle (public or program)	
					State		Contract				
	M	F	M	F	M	F	M	F		vehicle	moto
Adminnistration Office	1	0	1	0	2	1	1	1	0	0	0
Economy Office	0	0	0	0	2	0	0	0	0	0	0
Social Affair Office	1	0	0	0	2	0	0	0	0	0	0

13.5 Municipality/District/Khan line offices

Office Name	Chief		Deputy Chief		No. of Staff				Office Area (m2)	No of vehicle (public or program)	
					State		Contract			vehicle	moto
	M	F	M	F	M	F	M	F			
Planning Office	1	0	0	0	0	0	0	0	0	0	0
Rural Development Office	1	0	1	0	0	0	0	0	0	0	1
Women Affairs Office	0	0	0	0	0	0	0	0	48.8	0	0
Environment Office	1	0	0	0	1	0	0	0	0	0	0
Education Office	1	0	1	0	7	1	0	0	224	0	3
Agriculture Office	1	0	2	0	4	0	0	0	56	0	1
Social Affairs Office	1	0	1	0	0	0	1	0	30	0	0
Cult and Religion Office	1	0	0	0	0	0	1	0	0	0	0
Finance Office	1	0	0	0	1	0	0	0	0	0	0
Information Office	1	0	0	0	0	0	0	0	0	0	0
Public Work Office	1	0	1	0	0	0	0	0	0	0	0
Lan Management Office	1	0	1	0	1	0	0	0	30	0	1
Industry Office	1	0	1	0	1	0	0	0	0	0	0
Water Resources Office	1	0	0	0	0	0	0	0	0	0	1

13.6 Properties and Equipment of District Administration

13.6.1 Buildings

Description	Unit	Number	Remark
Office building type			
- Concrete	building	2	
- Wood	building	2	
- Mixed	building	0	
Total floor space	m2		
- Concrete	m2	320	
- Wood	m2	84	
- Mixed	m2	0	
Building condition			
- Concrete	%	70	
- Wood	%	40	
- Mixed	%	0	
Office reserved land area	m2	0	
Total office land area	m2	15,910	

13.6.2 Means of Transport available at the District Administration

Description	Unit	Number	Remark
Vehicle (type, size and condition)	Vehicle	0	
Motorcycle (type, size and condition)	Motor	0	

13.6.3 Equipment in District Offices

Description	Unit	Number	Remark
Generator	per set	1	
Photocopy machine at the office	per set	0	
Private photocopy machine at the district town	place	0	
Telephone network (mobile line service)	network	4	
Telephone network (land line service)	network	0	
Fax (include Fax number)	per set	0	
Computer	per set	1	
Printer	per set	0	
Scanner	Per set	0	
Number of computers those can access Internet and email services in the municipality/ district/khan office (including the technical line offices (please provide the email address)	set	19	
Typewriters (including the technical line offices)	per set	0	
Staff of Municipality/district/khan office can use computer	person	4	

13.6.4 Equipment and facilities at the District Town

Description	Unit	Number	Remark
Availability of electricity at noon	Nr Hours	0	
Private internet and email services in the municipality/ district/khan town.	place	0	

13.7 Registered Revenue of the District Administration in 2008³**13.8 Services in the District****13.8.1 Public Sector Services**

Type of Infrastructure/services	Unit	Number	
		Public	Private
Schools			
Pre-school	room	1	0
Primary School	room	92	0
Secondary school	room	35	0
High School	room	5	0
University	room		
Health			
Health post	place	3	0
Health center	place	1	0
Referral Hospital	bed		

³ Please note that the data in this table are at best estimates. If the table appears blank it does not mean there is no revenue, just that the data have not been recorded/entered.

13.9 Civil Society Organizations active in the District

13.9.1 NGOs, Associations, Programs and Projects

Name	Abbr.	Sector Activities	No. of Target Communes	No. of Target Villages	Office in District
HOP	None	សុខភាព និងបណ្តុះបណ្តាល	2	31	Yes
LWF	None	អភិវឌ្ឍន៍ចំរុះ	5	69	Yes

13.9.2 Political Parties active in the Municipality, District and Khan

Name	Abbr.	Office in District
Cambodian People Party	CPP	Yes
FUNCINPEC Party	FUNCINPEC	Yes
Human Rights Party	HRP	Yes
NRP	NRP	Yes
SAM RAINSY Party	Sam Rainsy Party	Yes

13.10 Private Sector Organizations

13.10.1 Registered Companies in 2008, by District

On private sector at commune and/or district level	KSP	Phnum Srouch	Kong Pisey	Boseth	Chhba Mon	Tporng	Oudong	Oral	Samrong tong
Businesses and Companies									
Number of registered agricultural enterprises (except family farms)	14	7	7	0	0	0	0	0	0
Number of registered shops, restaurants, transporters and other services	199	n/a	82	12	25	4	10	4	62
Number of manufacturing companies	53	29	0	0	10	0	4	0	10
Number of registered commercial enterprises	8	2	2	0	n/a	0	2	0	2
Number of registered mining companies	17	0	0	0	n/a	0	0	1	16
Number of financial institutions	20	2	4	5	4	2	2	0	1
Number of other commercial institutions		8	n/a	0	n/a	0	0	0	0
Estimated number of informal enterprises (not registered)	11	7	n/a	0	n/a	n/a	4	n/a	n/a
Employment									
Number of people employed in 2008 by companies or any other enterprises	38,938	450	10,872	7,685	1,848	305	7,176	552	10,050
Investment									
Amount invested in 2008 by private sector (\$)	17,520,000	6,500,000	0	2,040,000	950,000	1,500,000	3,525,000	0	3,005,000
Markets									
Number of markets, operating at least weekly	38	4	3	12	4	2	6	2	5

Note: These data are not comprehensive as different companies and business are registered with different departments and not all departments were able or willing to provide detailed information. The number of informal enterprises reflects a rough estimate, made at provincial level and could not be verified.

Source: Unofficially collected at Provincial Level

13.10.2 Farmers in 2008, by District

Credit	KSP	Phnum Srouch	Kong Pisey	Boseth	Chhbamon	Tporng	Oudong	Oral	Samrong tong
Volume of credit provided to farmers in 2008 (\$)	2,427,584	n/a	n/a	105,829	n/a	n/a	2,019,925	n/a	301,829
Number of farmers receiving credit in 2008	10,334	n/a	n/a	1615 families	n/a	n/a	6244 families	n/a	2475 families
Volume of credit provided to companies in 2008 (\$)	3,512,959	n/a	n/a	n/a	n/a	n/a	3,512,959	n/a	n/a

Note: Please note that these data are not necessarily complete or correct. The data are derived from government agencies at provincial and district level which used different recording systems, did not always have complete data or were, sometimes, less than willing to share their data.

Source: Unofficially collected at Provincial Level

SECTION E: POVERTY DATA

14 Data on Poverty

14.1 Predicted Poverty Rates for 2009, by commune

The **Predicted Family Poverty Rate** is based on a statistical model (robust multilevel mixed effect regression) at village level developed by the NCDD M&E Unit and uses CDB data for making an estimate of the predicted poverty rate (this is: *the portion of total families in the district or commune who are expected to be poor*) for the following year using current year data.

The basis for this predicted poverty rate also uses IDPoor (a project of the Ministry of Planning with technical assistance provided by GTZ) data

Commune	2004	2009
Haong Samnam	50.60%	41%
Reaksmei Sameakki	50.90%	42.40%
Trapeang Chour	52.30%	42.50%
Sangkae Satob	50%	40.60%
Ta Sal	51.70%	43.80%

14.2 Poverty data from survey

14.2.1 Identification of Poor Households Program (IDPoor)

The Ministry of Planning IDPoor Program has developed standardized Procedures for Identification of Poor Households in rural areas. These Procedures are implemented using a participatory and consultative process by sub-national government structures and community representatives.

The IDPoor Program is managed by the Ministry of Planning (MOP), in cooperation with the Ministry of Interior's Department of Local Administration (DOLA). The program is supported by the Federal Republic of Germany, with technical assistance provided by German Technical Cooperation (GTZ). In 2009, AusAID also provided funding support to the Program.

Objective

The IDPoor Program aims to implement the Procedures for Identification of Poor Households in rural areas as widely as possible, in order to provide data on the level of poverty of areas and households that can be used by a large range of institutions and organizations for targeting services and development assistance to poor areas and poor households.

Coverage: During 2007, 2008 and 2009 the IDPoor Procedures have been implemented in 18 provinces (with partial or complete coverage), covering a total of around 7000 rural villages. The MOP and a number of NGO partners who are Health Equity Fund Operators have collaborated in collecting this data from different areas.

Categorization: Identified poor households are classified under two poverty categories: Poor Level 1 (very poor), and Poor Level 2 (poor). Households are classified based on data collected using a standard questionnaire, together with consideration by villagers of these households' special circumstances.

Further information: Please go to the IDPoor Program webpage at www.mop.gov.kh/Projects/IDPoor/tabid/154/Default.aspx

This District has not yet been covered by IDPoor